



Compliments of

Sacramento County
California

SACRAMENTO AS A FRUIT DISTRIBUTING CENTER

BY F. B. Mc KEVITT



SACRAMENTO is the logical and natural distributing point for the eastern shipments of California's deciduous fruits. This is true, not only because of the location of the city on the main line of the great railway that carries the larger portion of the crop, but especially because this city offers the natural outlet for the great Sacramento Valley on the north, and the wonderfully productive San Joaquin Valley on the south, these two contributing practically eighty per cent of the entire deciduous fruit output of the state.

Sacramento has fine railway facilities now, and they are constantly improving. Located upon the east bank of the Sacramento River, she has all the advantages of water transportation and the low rates that always follow such a location.

The city may be said to be the center of a network of railways. The main line of the Southern Pacific, which was the first transcontinental road to be built, has always enjoyed, and until within the last two years, has had a practical monopoly of transcontinental fresh fruit transportation. Two years ago the Western Pacific, a new transcontinental road, threw its lines open to business, and since that time has been a considerable factor in this business. In addition to these two great roads are several electric lines. The Northern Electric, which taps the rich country to the north of us as far as Chico and Oroville. To the south, the Central California Traction, an electric road, which

SACRAMENTO RIVER WATERFRONT, SHOWING SPLENDID SHIPPING FACILITIES





VIEW OF JOBBING CENTER, SHOWING HOW RAIL MEETS WATER. HUNDREDS OF CARLOADS OF DECIDUOUS FRUITS ARE SHIPPED ANNUALLY FROM THE SACRAMENTO WATER FRONT.

operates as far south as Stockton. Another line now in process of construction in the San Joaquin Valley, will tap very rich and productive sections, and, ultimately, exchange business with the Traction Line at Stockton, thus opening up to this city a territory which has not heretofore been tributary to Sacramento. To the west, the Vallejo & Northern, an electric line affiliated with the Northern Electric, is now building. This will provide access to the great fruit belt of Solano and Yolo, and, when the road is completed to Vallejo, connection will there be made with the Napa Valley electric line, opening up another large and rich territory. The Sacramento Southern Railway, following the course of the Sacramento River, in connection with the numerous transportation lines running boats upon the river, brings into the city the products of that wonderfully fertile section.

The Southern Pacific Railway has, for many years, given most careful and painstaking care to the transportation of fruit, and, since this railway has taken the business of refrigeration out of the hands of private companies, and performed this service in connection with the freight haul, great improvements have been inaugurated, until to-day it is beyond question that California enjoys the best transportation facilities of any fruit growing state in the world. The same fine refrigerator car service is also offered by the Western Pacific, which uses the same equipment as the Southern Pacific. All shipments routed over the Western are concentrated in Sacramento and delivered to

"CAPITAL CITY," RIVER STEAMER OF THE CALIFORNIA TRANSPORTATION COMPANY.

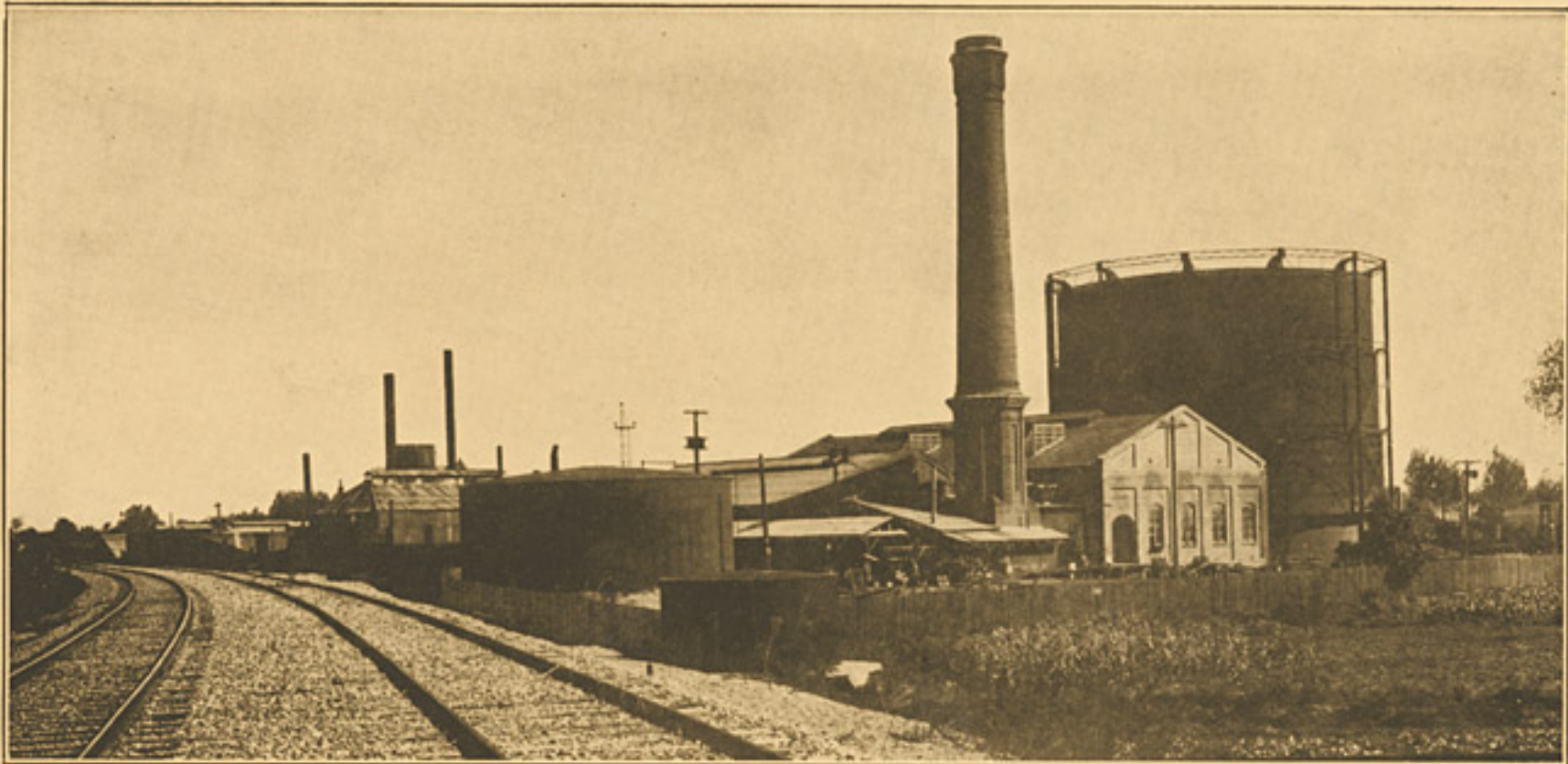


the new line, which has made an enviable record in the expeditious and correct handling of this perishable product.

California's interstate shipments of fresh fruit in 1911, up to and including November 25th, excluding fractions of carloads, amount to

216 cars	Cherries
214 cars	Apricots
2,027 cars	Peaches
1,366 cars	Plums
2,324 cars	Pears
6,347 cars	Grapes
16 cars	Assorted Fruits

making a total of 12,512 cars of thirteen tons each, which equals 162,656 tons, or, practi-



SECTION OF PLANT OF THE PACIFIC GAS AND ELECTRIC COMPANY. SACRAMENTO'S SPLENDID STREET CAR SERVICE IS IN KEEPING WITH THE GROWTH OF THE CITY.

cally, twelve million packages. It may be fairly estimated that the selling value of these shipments was about \$12,000,000.00, of which one-half, or \$6,000,000.00, represents the return to growers after all transportation and selling expenses have been deducted. This amount would have been much greater, but for the fact, that, after August 15th, California fruits were called upon to meet unusually heavy competition from eastern fruit crops, which, from that date until October 1st, were flooding all markets.

The greatest pear-producing section of the state is the rich Sacramento River district. The great table grape section is the northern part of the San Joaquin Valley. Vacaville, Winters and Suisun ship about 2,000 carloads of assorted fruits. The American River district nearly 1,000. Not less than 5,000 cars of grapes are shipped from the territory within forty miles of this city. The great bulk of our pears is grown within the same radius. Great tracts of land, which for years, produced nothing but hay, wheat or barley, with, perhaps, several thousand acres supporting less than half a dozen families, have passed out of the hands of their former owners and into the possession of more progressive and farseeing men. Water, for irrigation, has been brought in and distributed over large areas, which have been sub-divided into small tracts of ten and twenty acres, or more, and are now being sold to actual settlers. This land will be planted to fruits and alfalfa, to which it is specially adapted, and, in a few short years, will be supporting a large population, bringing prosperity to them and to the whole state. In this prosperity, Sacramento is sure to share in a greater measure than any other, as she is the nearest large city. Great reclamation projects are progressing to the north and west of us. Thousands of acres of overflowed lands will be rescued from the water and turned into fields, gardens and orchards of fertility unsurpassed, ready to direct their streams of golden reward into our channels of trade, further to upbuild and strengthen the beautiful Capital City.

"NAVAJO," RIVER STEAMER OF THE SOUTHERN PACIFIC CO.

