

HARVIE HARDWARE AND IMPLEMENT CO.



Store News

VOL. I.

SACRAMENTO, CALIFORNIA, SEPTEMBER 1, 1923

No. 4



A wise hardware merchant has said that "Pleased customers are a most valuable asset to any business." This has been proven many times, and the success and growth of our business is due to the ever increasing list of pleased and satisfied people who buy their hardware and housewares at this store.

Three of the big things that succeed in making friends and customers for us are:

1. Having dependable goods.
2. Marking them at fair prices.
3. Giving prompt and courteous service.

Our store is a public servant. We aim to render our customers the sort of service they have a right to expect. We strive to maintain complete assortments of high grade merchandise, and we are always ready to make good if anything bought here proves unsatisfactory. Insure your own satisfaction by shopping here.

—H. B. HARVIE, Editor

OUR HARDWARE DEPARTMENT GROWING VERY RAPIDLY

It is very gratifying to us the way our Hardware department has been growing. Our business has increased beyond expectations. Almost every day sees some new line added to our stock, which we hope to make the most complete in Northern California. We have tried to make our display attractive, and we believe you will find our prices interesting. We car-



R. A. HARVIE

We are pleased to present to our readers a photo of Robert A. Harvie, otherwise known as "Dad," our president and manager of our implement department.

"Dad" Harvie has been in the implement business nearly forty years, starting in a small way at Isleton, on the Sacramento river. Some of the high-grade buggies manufactured by "Dad" in the '90s are still in use in the down-river district. In those days he sold the old-time Jones Chain drive Mower, with the name 'Jones Mowers' in large letters across the front of the shop. For this reason many of the traveling men were in the habit of calling Mr. Harvie by the name of Jones, and by this name he is still known to many old timers on the road.

In 1897 Mr. Harvie left Isleton and came to Sacramento, entering the

ry only the better grades of merchandise, and we invite you to call and see for yourself the better values we are offering you.

employ of the old firm of Diggs Vehicle & Implement Co. on 2nd street, later known as the Thomson-Diggs Company, where he remained in charge of their farm implements for seventeen years.

Many farmers in Superior California are still using implements purchased from "Dad" while he was with the Thomson-Diggs Company. In February, 1914, these people closed out their implement department, and "Dad" and Raymond Harvie opened the Harvie Hardware & Implement Co. store at 1124 J Street. In 1919 it was found necessary to move into larger quarters across the street at 1117 J Street, and later into still larger quarters at 922 Twelfth Street, and finally into our new and bigger home at 1220-1222 J Street; next to the new Public Market, now building.

"Dad" Harvie is considered, by those who know, to be one of the best implement men in the state. When "Dad" sells you an implement to do certain work you can be sure that it will have to prove satisfactory or you have not bought anything.

In all of "Dad's" forty years of making and selling farm machinery he has always tried to give the farmer a square deal, which is one of the main reasons for his growing list of friends and the reason why so many farmers want to buy their implements from "Dad" Harvie.

DON'T FORGET THE STATE FAIR September 1 to 9

We will exhibit full line of Kifer and Moline Implements in the Power and Farm tent. Ask for one of our catalogs.

AGRICULTURE—PAST AND PRESENT

By CLARENCE E. JARVIS
New Business Department of the
Capital National Bank

Up to the time of the American conquest the productive lands of California were chiefly in the hands of the Missionaries. Each of the Missions included about fifteen miles square, and the boundaries were generally equi-distant. As the science of agriculture was then in a primitive condition in Spain, the Padres of California could not be expected to know much about farming.

They knew nothing about the utility of fallows, or the alternation of crops, their only mode of renovating exhausted soil being to let it lie idle and under the dominion of native weeds until it was thought capable of bearing crops again. Land being so abundant there was no occasion for laborious or expensive processes of recuperation.

The grains most cultivated were Indian corn, wheat, barley and a small bean called frijol which was in general use throughout Spanish America. Indian corn was the bread staple.

The plow used was a primitive affair. It was composed of two pieces of wood; the main piece, formed from a crooked limb of a tree of the proper shape, constituting both sole and handle. It had no mould-board, or other means of turning a furrow, and was only capable of scratching the surface of the ground. A small share, fitted to the point of the sole, was the only iron about this implement. The other piece was a long beam, like the tongue of a wagon, reaching to the yoke of cattle by which the plow was drawn.

Harrows were unknown, the wheat and barley being brushed in by the branch of a tree.

In 1831 the whole amount of grain raised in Upper California, according to the Mission records, was 46,202 fanegas—the fanega being equal to $2\frac{1}{2}$ English bushels. Wheat and barley were then worth two dollars the fanega, maize a dollar and a half; the crop of that year at the several Missions being worth some \$86,000.

In 1836 the value of a fat ox or bull in Upper California was five dollars; a cow five; a saddle horse ten; a mare five; a sheep two, and a mule ten dollars.

Captain Sutter in 1846 harvested a wheat crop on the lands surrounding Sutter Fort of about 8000 bushels—the season was not a favorable one. The wheat fields were secured against the trespass of horses and cattle by ditches.

Captain Sutter introduced some American farm implements, but still his land was imperfectly cultivated.

The site of the town of Nueva Helvetia which was laid out by Sutter was about a mile and a half from the Sacramento River. It is on an elevation of the plain and not subject to overflow when the waters of the river are at their highest point. There were then but three or four small houses in this town, but Sutter said, "I predict it will in time become a place of great importance."

I have given you the above historical facts in order that you may appreciate the growth and development of agriculture in California and by noting its progress in the past, get a vision of the future. From growing a few necessities for food for man and beast, agriculture has developed until all known fruits and grains are grown in abundance, and from the rude plows used to till the virgin soil have grown great industries to furnish all the best implements of farming known to modern ingenuity.

General Sutter's prophesy is fulfilled. Sacramento has long been a place of importance. The real "Hub City" of the coast, as it has grown from three or four houses in the past to the present large beautiful city, so it will grow in the future to a great city.

The people of Sacramento should realize that they must encourage the farmer, the miner, co-operate with him and make a market for his products. To rejoice with him in prosperity and to extend him financial assistance when in need, for, after all, no city can be richer than the country it depends upon.

Simplification

"What you doin'?" demanded the foreman of a construction gang sternly of an alleged worker.

"Nothin'," was the reply.

"Well, there's no use of both of us doin' the same thing. You get busy and do something."—American Legion Weekly.



This One's for Married Men Only

There is no use trying to joke with a woman. The other day Jones heard a pretty good conundrum and decided to try it on his wife.

"Do you know why I am like a mule?" he asked her when he went home.

"No," she replied promptly. "I know you are, but I don't know why you are."

Give and Take

They are telling this one on a couple of would-be burglars who hit the city not long ago. Said one to the other, as he came from the open window at midnight, "Did you get anything?"

"Naw," his pard growled, "this is a lawyer's house."

"That's tough," the first burglar sympathized; "did you lose anything?"

Summer Diet Hint

First Cannibal—Our chief has hay fever.

Second Cannibal—What brought it on?

First Cannibal—He ate a grass widow.

A Kitchen Fixture

The mistress who had engaged a new cook made a tour of inspection after she had kept her a week, and found a policeman locked in the pantry.

"How did this man get here?" she asked severely.

"I'm sure I don't know," was the cool reply. "He must have been left over by the last cook."

A Rosy Tint on the Future

Summoning her eight-year-old hopeful recently, a Philadelphia mother said: "Dickie, your poor grandfather is very sick. Can't you say something to cheer him a bit?"

Whereupon Dickie approached grandpa and, in the most earnest tone, inquired:

"Grandfather, how would like to have soldiers at your funeral?"



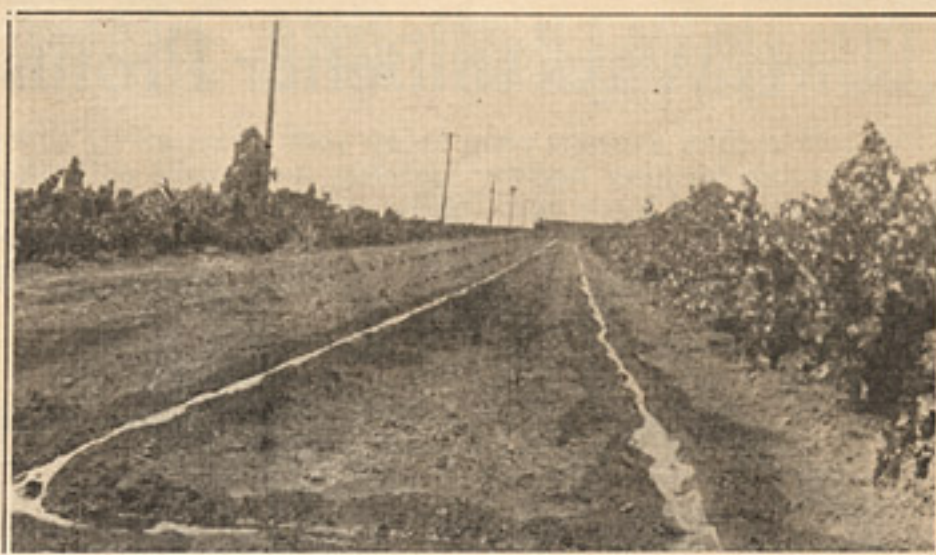
Next to the ideal system shown in the opposite cut, and where that system cannot be used, the above cut shows a very efficient and labor saving system of irrigation. The ditches for this system are made with what is known as a crowder or ditcher attachment for the subsoiler.

These ditches can be made almost any width and depth desired, and can be used on ground that has from 10 to 20 inches variation from the level.

This system puts the water in the ground. It depends only on the size of your ditch as to how much water you can put in the ground at one time.

By actual tests we have found that the water will seep latterly between two rows of trees twenty-four feet apart, using two ditches between the trees. As soon as the water has seeped out of the ditches a reverse "V" is used to throw the dirt back into the ditch, which will leave the ground level and as smooth as it was before the ditch was made. This stops all loss of water by evaporation, and enables the grower to get on the ground with his deep tillage tools very soon after irrigation.

One of the nice features of this system is that the men are working on dry ground instead of wading around in a lot of muck, shoveling and trying to fill up the breaks



The above cut illustrates the ideal method of irrigation and can be used in a large percentage of orchards where soil conditions are right and the ground does not have a rise or fall of over twenty inches. To use this system you need only a subsoiler, running same down from 15 to 25 inches, the depth depending on the nature and condition of the soil. The subsoiler breaks and heaves the ground, leaving a more or less subterranean ditch through which the water flows. The proper way to use this system is to have head ditch from which is turned in streams of $1\frac{1}{2}$ to 2 inches of water into these subsoil furrows, or cuts, letting the water run until it shows up at the other end of the furrow, when you will find that the ground is thoroughly saturated, although the top of the ground may still appear dry. This system obviates making any furrows in which to run the water and there is very little work to be done with the shovel. This system, while it may appear to be slow, is much more efficient and thorough than any system that we know of, as the ground is more thoroughly saturated, leaving the top soil in a condition so that the grower can start his tillage operations much sooner than he can with the checking and flooding system. If you are at all interested in this system, call or write, and we will be glad to go into the matter further with you.

as they have to do when the old system of checks and flooding is used.

Another thing: this system of irrigation can be done much cheaper and quicker than the old way. We have the written statements from people who have used this system. They state "with two men, who practically did no more than two hours' work a day, as compared with five or six men, irrigated the same ground in one-third of the time that it took with the flooding system, and there was more water put into the ground."

It seems like a broad statement to make that this system can be used as stated above, when there are raises in the ground from 10 to 20 inches, but this has been proven beyond a question of a doubt, by actual tests and work in the field.

THE HARVIE HARDWARE AND IMPLEMENT COMPANY

DEEP TILLAGE SPECIALISTS

1220-1222 J Street

Phone Main 6900

Sacramento, California

Housekeeping Helps



The screw tops of oil cans, mason jars or any stubborn screw cover, can easily be turned by the aid of a piece of sandpaper, rough side next to the top to be unscrewed, and turn as usual.

To remove stains on white paint made by scratching matches, rub with a cut lemon. When dry, rub a little vaseline on the spot and the offense will not be repeated as it will not be possible to scratch the match on that spot for some time. If you wish to paint over this you will need to wipe the vaseline off first.

Test string beans before purchasing them. Break one open and if it is brittle and the bean very small you can rest assured it is good. The string should be delicate.

When baking a single crust pie, put it on the outside of the pie plate, turned upside down. It will not shrink and you will avoid the annoyance of blisters. When done reverse it, put in the filling and when ready to serve you will not have a crust sticking to the pan.

The perspiration strains in white blouses and lingerie can be removed by soaking the garment in cold water to which a carbonate of soda has been added.

FOR SALE

12-24 H. P. Waterloo Boy Tractor in good condition. \$100. H. L. Murphy, Perkins.

8-16 International Tractor, ready to run. \$300. W. C. Huntley, Clarksburg.

WANTED

Small second-hand Almond Huller. Send prices and information to Harvie Hardware & Implement Co.

Have you any second-half farm machinery for sale? If so, perhaps we can help you through the medium of this paper. The service is free to you.

For Your Implements

Use Glidden Implement and Tractor Paint, and your farm equipment will last years longer. There's nothing like a good coat of Glidden to prevent rust and rot—there's no finish anywhere that will stand exposure and hard usage any better, if as well. We guarantee it—come in.

GLIDDEN
PAINTS—VARNISHES—STAINS—ENAMELS



If you want a better grade of Paint at reasonable prices, we ask you to give us a trial.

A Better Engine

FOR LESS MONEY ANY SIZE YOU WANT

2 Horse Pulls 2½

Now \$57.00
Only

BOSCH Magneto \$12 additional.

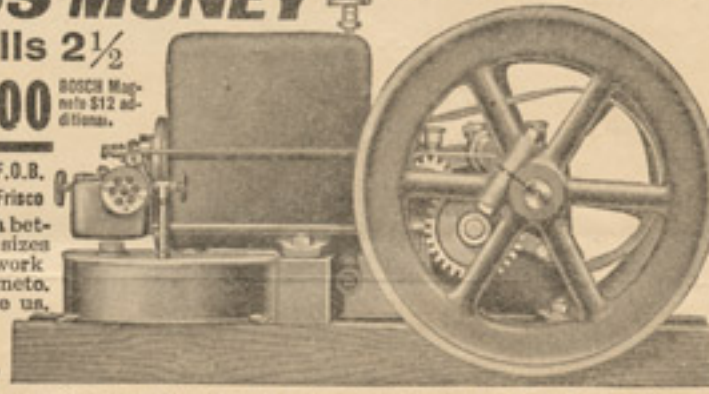
F.O.B. Frisco

Here's your chance to get a better engine at less cost, in sizes 2 to 25 H.P.—for all work. Genuine BOSCH Magneto. If you want POWER—see us.

WITTE

Throttling Governor
ENGINES

Burn Distillate, Gasoline, Kerosene or any similar fuel. Automatic on load. Speed can be varied to get utmost power—or reduced one-third by means of Speed Regulator. Easy to Start and Operate—No Cranking. Engines are simple in construction. Anyone can understand and use them. Come and See them work.



WE HAVE NOT RAISED THE PRICES OF OUR ENGINES

Quality Remains long after the Price is Forgotten



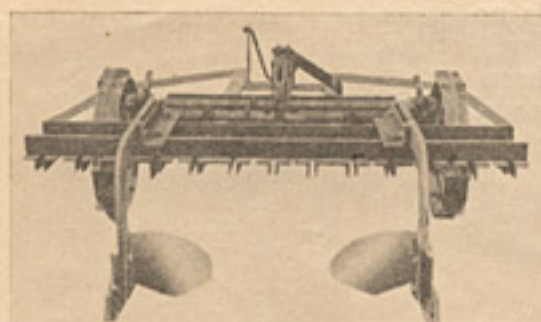
A clean job of furrowing in vineyard may be had by using the attachments for cultivator or subsoiler.



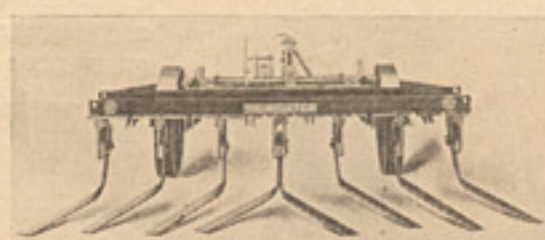
Right and left-hand plow attachment prepares ridges or furrows. Plows may be reversed and spaced as desired to turn light or heavy ridges.



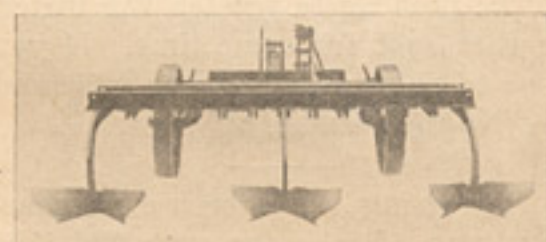
An irrigation standard is fitted with a furrower which runs ahead and 4 inches lower to break hard land and help water penetration.



When the beams are placed together, the plows operate as a middle breaker to dig irrigation or fertilizer trenches.



The weeder attachment is valuable against morning-glory, Bermuda or Johnson grass, etc. Blades may be turned in or out.



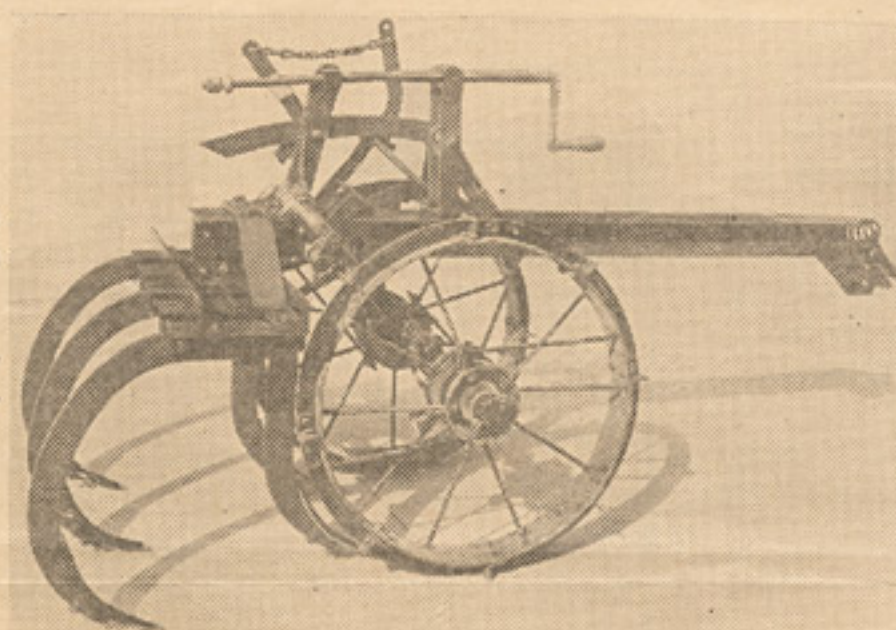
Common furrower attachment for irrigation in rows. The number used depends on the size of the cultivator.

The above photos show the various attachments for use with the
KILLEFER DEEP CULTIVATOR

Combination Subsoiler and Cultivator

Just the Tool for the Vineyardist whose vines are planted close.

It has no equal for working in between the asparagus rows.



Cuts 3 feet. Adjustable penetration 6 to 14 inches deep.

Changed to any combination in 20 minutes.

Five Standards with Nine-Inch Spacing.

Two Sizes; One for 6 to 10 h. p. Tractor and one for 10 to 20 h. p.

THE HARVIE HARDWARE AND IMPLEMENT COMPANY

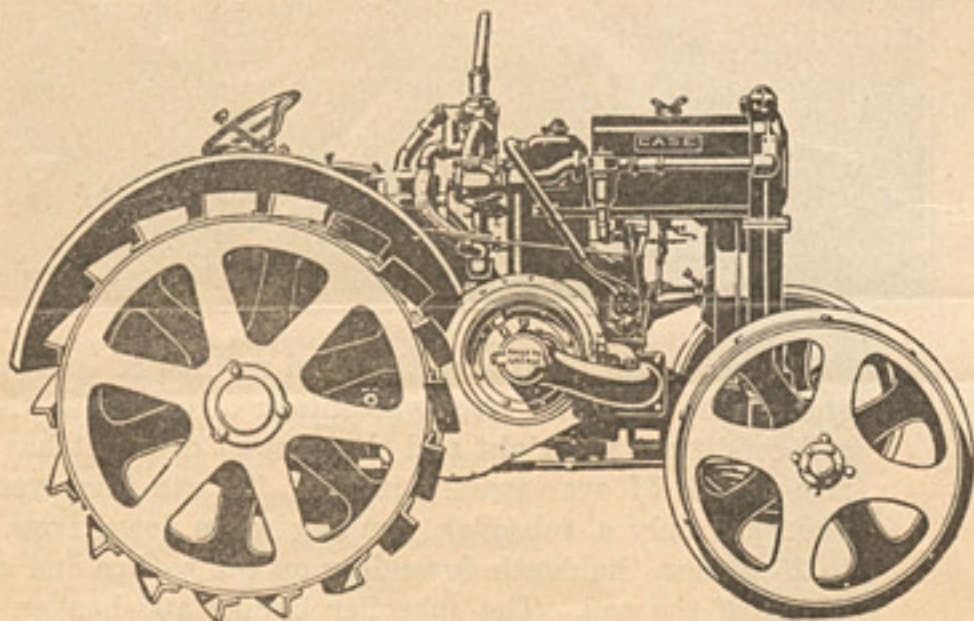
1220-1222 J Street

DEEP TILLAGE SPECIALISTS

Sacramento, California

Two Ways to Better Profits

A better than average crop every year, from every acre, by better farming and by farming more land with the same help and labor cost—these are SURE ways to better profits open today to you and to all farmers who use



With a Case tractor you get all the benefits of more timely work; better and deeper plowing; more intensive tillage; greater farming capacity; less help required; ample power for all drawbar and belt work.

Case tractors are well adapted to all farm work, both traction and belt. They are dependable and durable because:

In Case tractors all gears, bearings and wearing surfaces are enclosed—protected from dust and dirt.

The engine has removable bearing shells and bushings. Practically all other bearings are roller and ball bearings of the highest quality.

Ample power is furnished by

These advantages are enjoyed by thousands of Case tractor owners who find in them every year a source of better profit. Write for a copy of the booklet, "Better Farming with Better Tractors," and get the whole story.

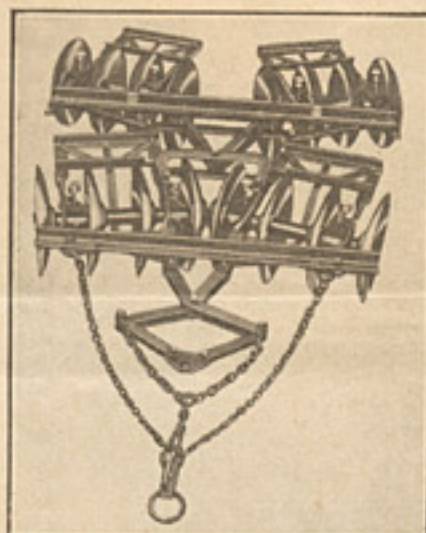
Case-built engines. This power reserve means economy and longer life.

Power is transmitted to both drive wheels through simple, cut steel spur gears—all completely enclosed.

Belt pulley is mounted on engine crankshaft, and there is no waste of power through gears.

Don't Plow

USE A KILLEFER COVER
CROP DISC INSTEAD



ADOPT THE KILLEFER SYSTEM

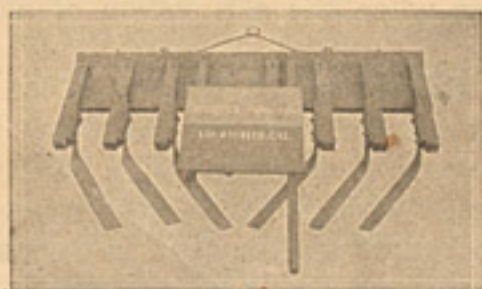
Result—Larger Crops, Better Quality, Less Expense

DISC in the spring when the cover crop is mature. Besides an ideal 8-inch mulch with no clods, you will have halved your expense, as your tractor or team will pull twice as many inches of Killefer Disc than it will of plows to the same depth.

CULTIVATE after deep discing and through the summer. The Killefer power lift cultivator penetrates any desired depth up to 12 inches; will break the plow pan, no matter how hard, leave it thoroughly shattered below the surface, and mix with it organic matter from above so that it will not compact again. A Killefer mulch saves the moisture.

SUBSOIL in the fall, any time after harvest. The Killefer shatters the ground so it can absorb all the rainfall and permits the weathering agents to slack and sweeten the subsoil, thus accelerating the release of plant food. For spring irrigation, the Killefer Furrow Attachment will revolutionize your irrigation practice.

Ask any Killefer owner. Over 300 adopted the system last year and everyone is a more than satisfied user. Drop in and let us outline the details of Killefer Tillage.



Killefer Adjustable Weeder

(shown above) is a world-beater. It goes deep enough for morning glory. Our "Clean-Cut" weeder, shown below, is a cheaper model.



Sizes from 4 to 10 feet.

Killefer blades are the best that money can buy. Immediate deliveries.

DON'T FAIL TO SEE THE

New Killefer Subsoilers

for 6 to 10 H. P. Tractors

in our large exhibit

AT THE STATE FAIR

We will exhibit a complete line of

KILLEFER DEEP TILLAGE IMPLEMENTS

MOLINE FARM MACHINERY

CASE KEROSENE FARM TRACTORS

While you are in our city we will appreciate the opportunity of welcoming you at our new store, 1220-1222 J street, where we have a fine new line of hardware and tools for your inspection.