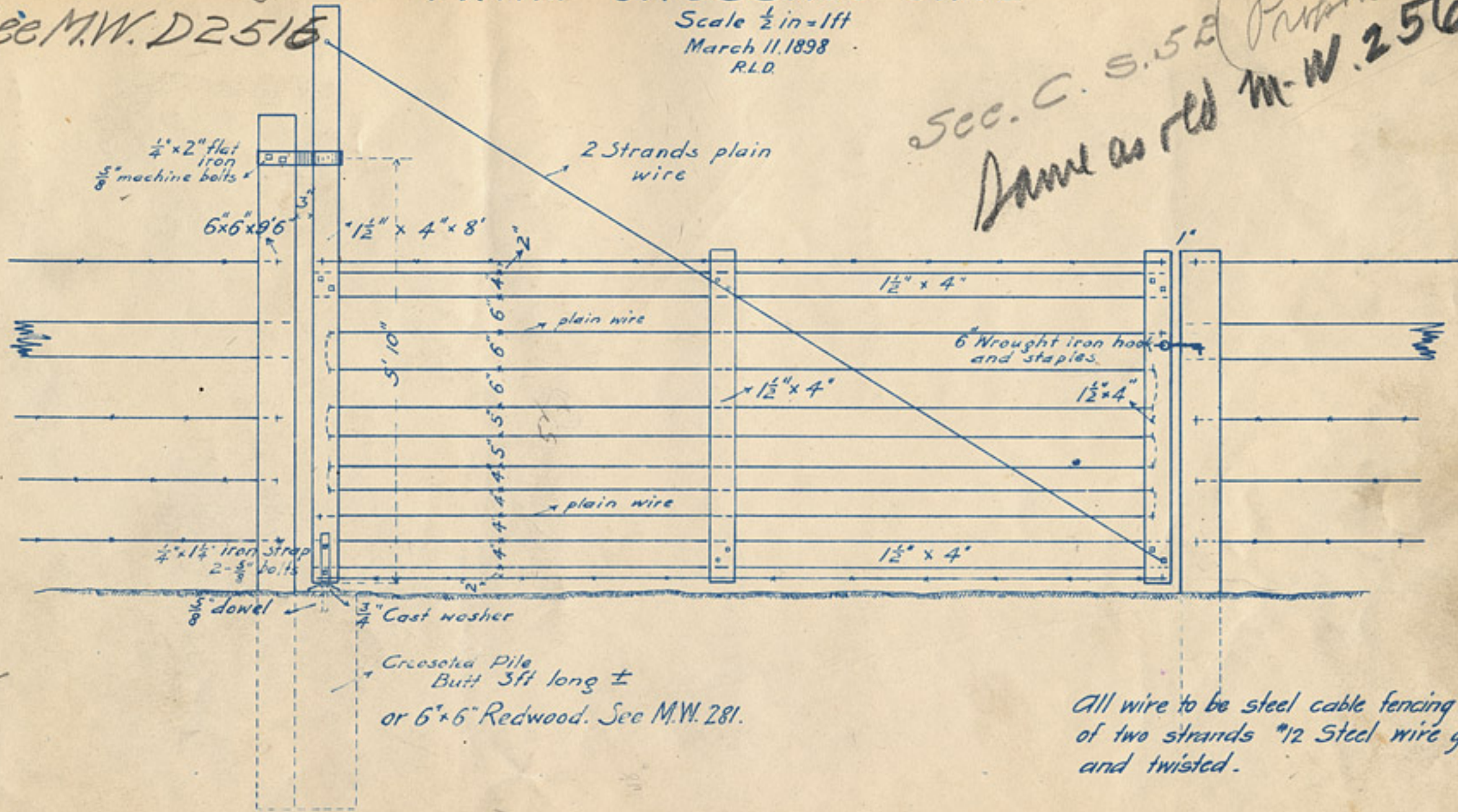


Traced Aug, 1914 FARM CROSSING GATE  
See M.W. D2516

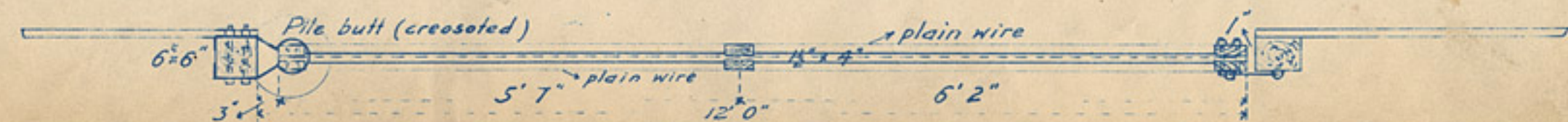
Scale  $\frac{1}{2}$  in = 1 ft  
March 11, 1898  
R.L.D.

M.W.  
541

See C.S. 52 (Purford)  
Same as red M.W. 2516



$\frac{6 \frac{1}{2} \times 2}{7}$



All wire to be steel cable fencing made of two strands #12 Steel wire galvanized and twisted.