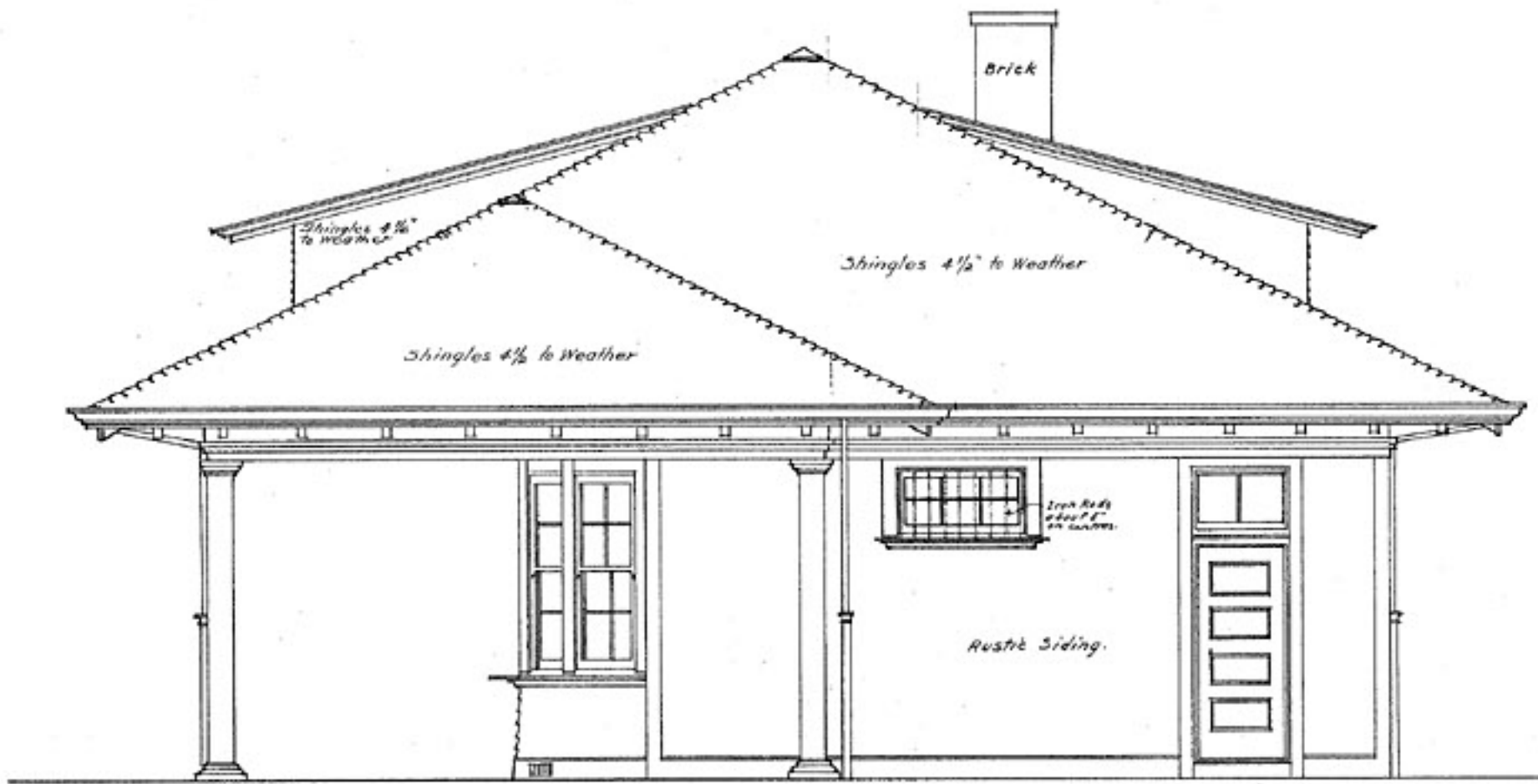
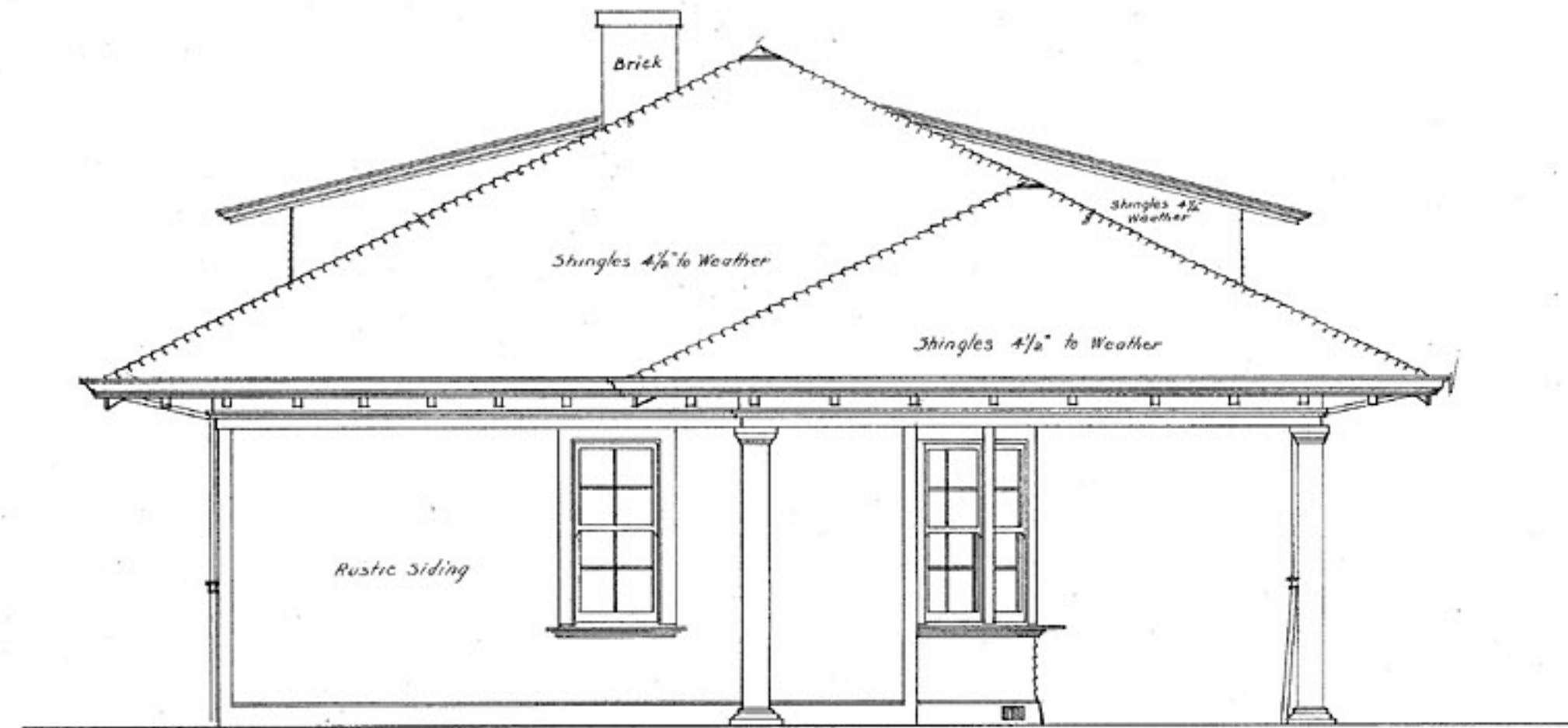


PASSENGER STATION
ROSEVILLE CALIF.

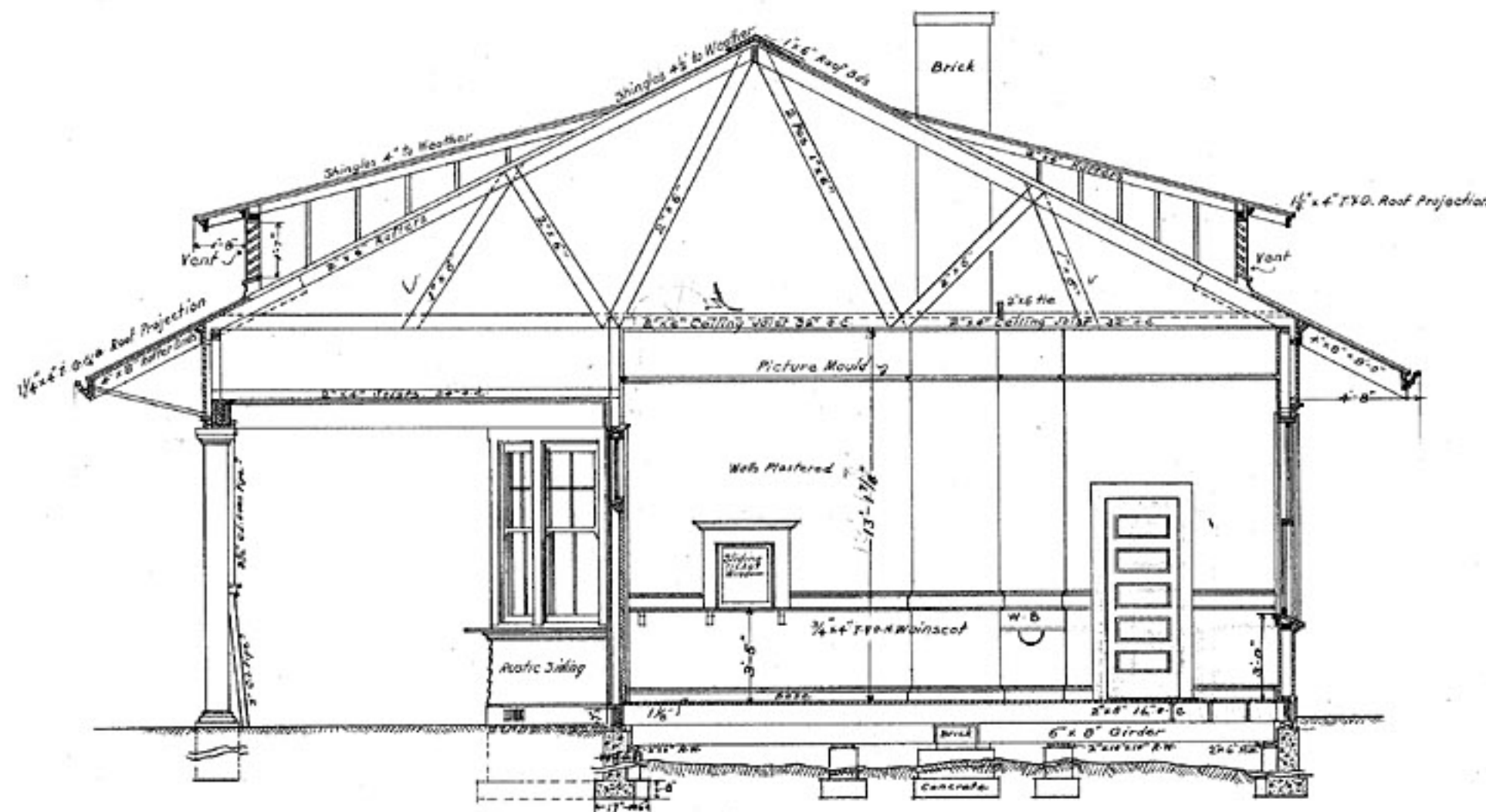
END ELEVATIONS · SECTION · & ROOF PLAN
SCALE $\frac{1}{4}"$ and $\frac{1}{8}"$ = 1'-0" F.W. JUNE 1906.



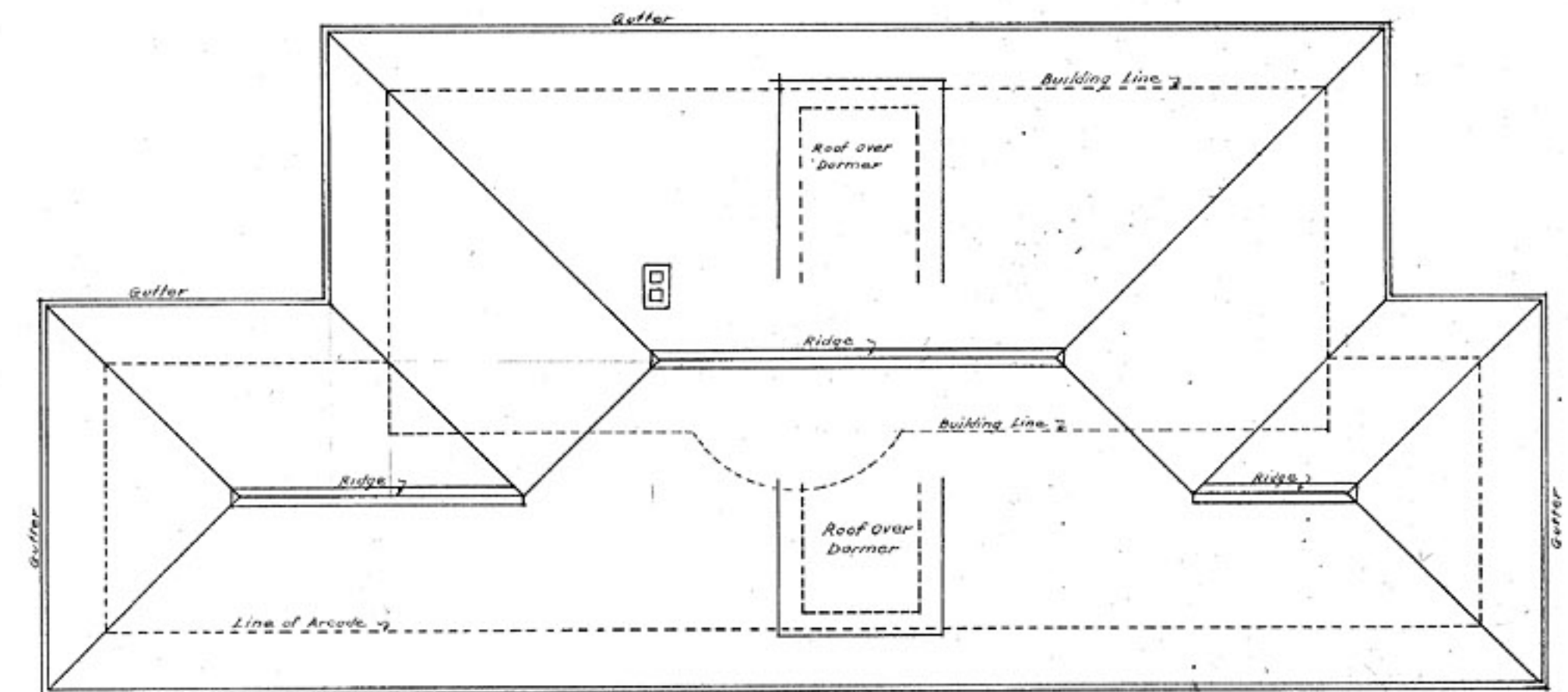
~ END ELEVATION ~
Scale $\frac{1}{4}"$ = 1'-0"



~ END ELEVATION ~
Scale $\frac{1}{4}"$ = 1'-0"



~ TRANSVERSE SECTION ~
Scale $\frac{1}{4}"$ = 1'-0"
"D-D"



ROOF PLAN
Scale $\frac{1}{8}"$ = 1'-0"