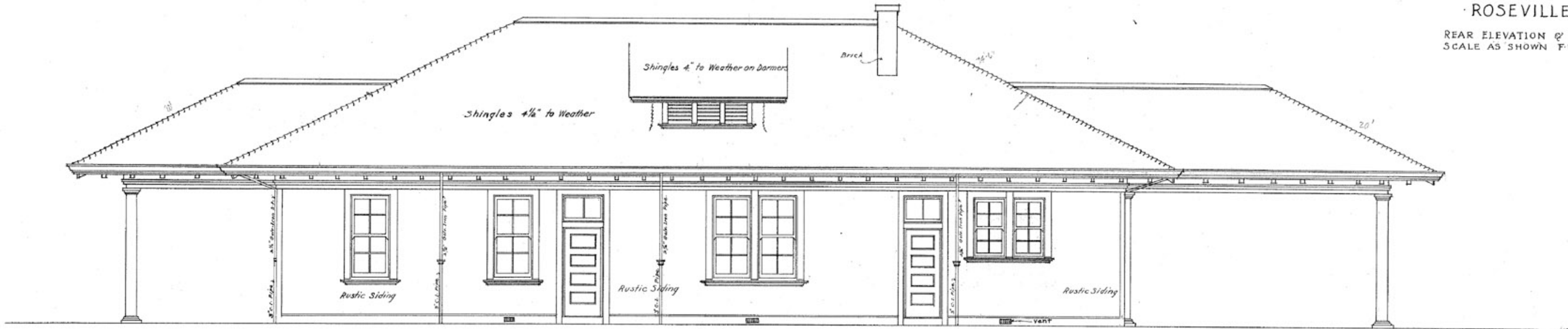
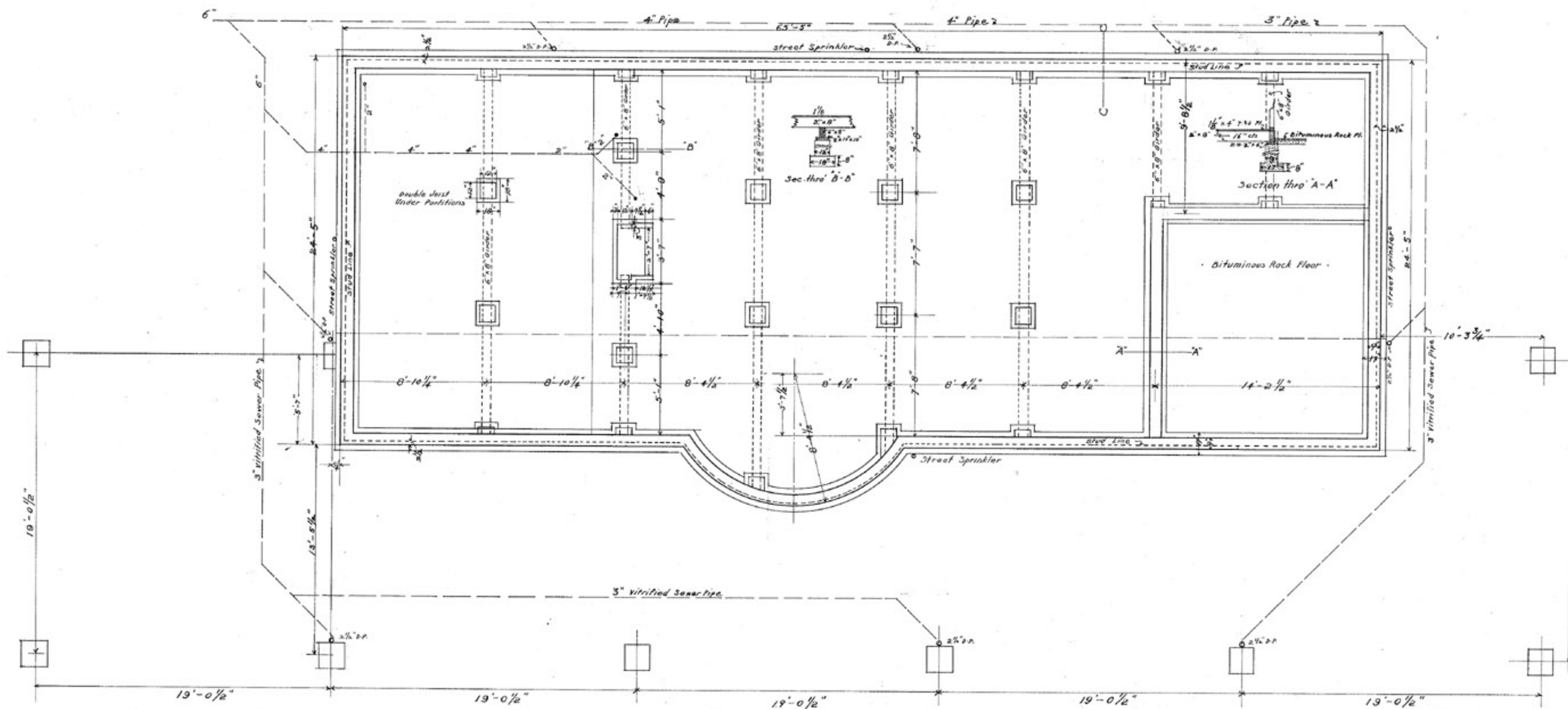


~ PASSENGER STATION -
ROSEVILLE CALIF.

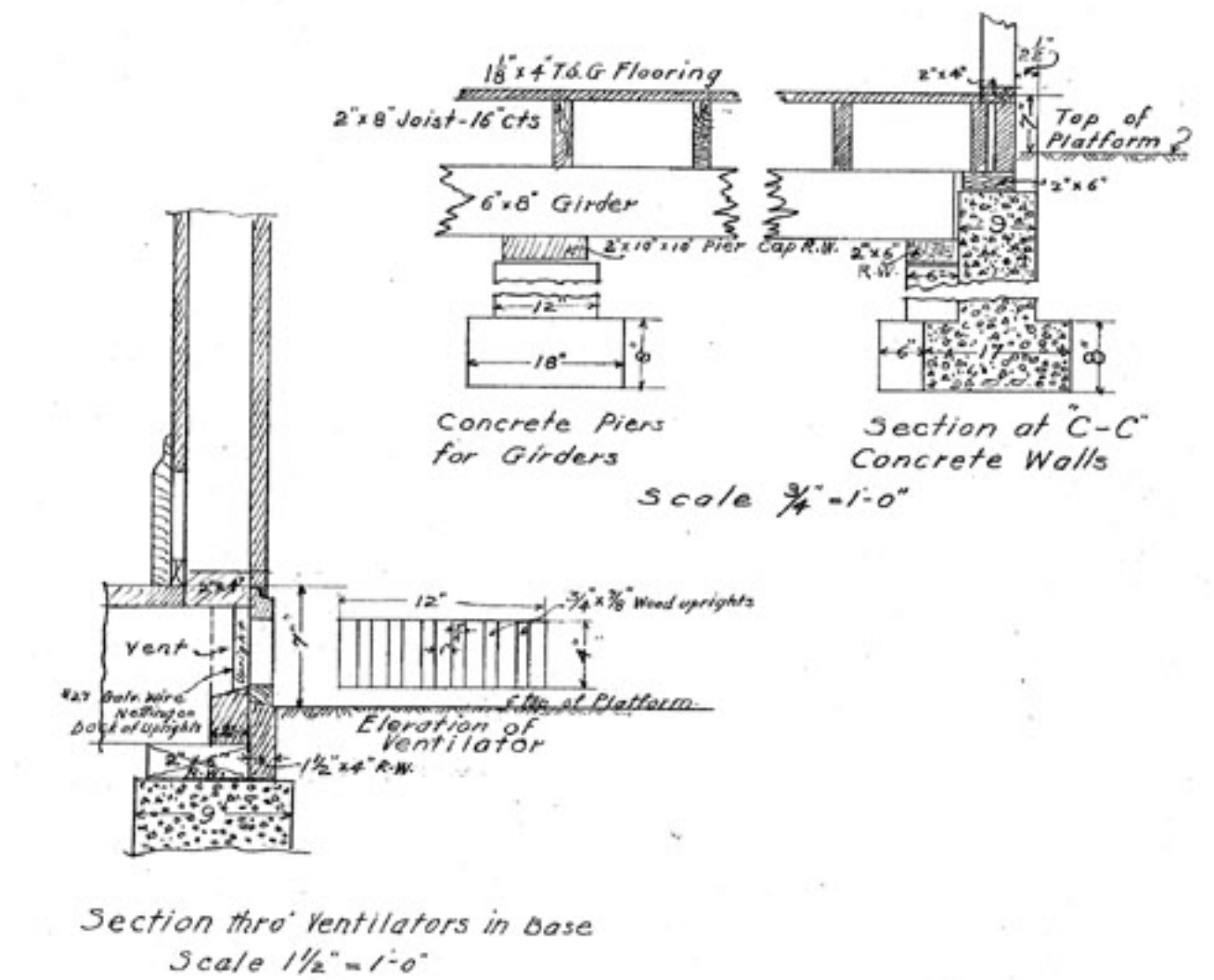
REAR ELEVATION & FOUNDATION PLAN
SCALE AS SHOWN F.W. JUNE 1906.



~ REAR ELEVATION ~
Scale 1/4" = 1'-0"



~ FOUNDATION PLAN ~
Scale 1/4" = 1'-0"



© 2003 CSRM

Date	Revised	
		M. W. D.
		Drawing No 156
		Sheet No 1
		Drawer No 40
Drawn by F.W. Traced by F.W. Checked by H.B.		