

Sacramento County, n.d.
5121
912
5
MAP

Russell Sage said: "The surest road to wealth is to buy acreage that lies in the path of a growing city."

**Sacramento is the
Railroad Center
of California**

SEE THE MAP

**Steam and Electric
Interurban Lines
Radiate in All
Directions
Bringing Trade
and Population to the City**



**Sacramento Enjoys
River
Transportation**

**Rail Meets Water and
Produces Business**

**Bringing
New Industries and
Increase
of Population**

SUBURBAN ACREAGE

Adjacent to the

City of Sacramento

1, 1½ and 2½ Acre Tracts on the Upper Stockton Road

\$130 per Acre Upward—Easy Terms

FOR SALE ONLY BY . . . SEE MAP INSIDE

GEO. X. FLEMING

The Best Posted Man in California on Sacramento Valley Lands

430 Jay Street

Ground Floor
Travelers Hotel Bldg.

Sacramento, California

HARKINS ACRES

*Small acreage tracts close to Sacramento City,
suitable for poultry, vegetables, berries, fruit and
general diversified crops*

THESE lands can be seen by making an appointment at our office, 430 Jay Street, or Phoning Main 3696, and we will call and take you out; or if you wish to go out yourself, go down the Upper Stockton Road to the Seven Mile House; one-half mile south of the Seven Mile House are two bridges, between these two bridges fences lead off to the right and to the left, these fences marking the north boundary line of the tract. The lot numbers on the stakes in the fence along the road from this point south will enable you to locate the different tracts as shown on the map.

Rub your imagination and develop a scheme upon which you can work out a way to own one of these small tracts. Every man who is worthy of the name should own his own home and produce his own eats out of the soil.

Hades is paved with good intentions

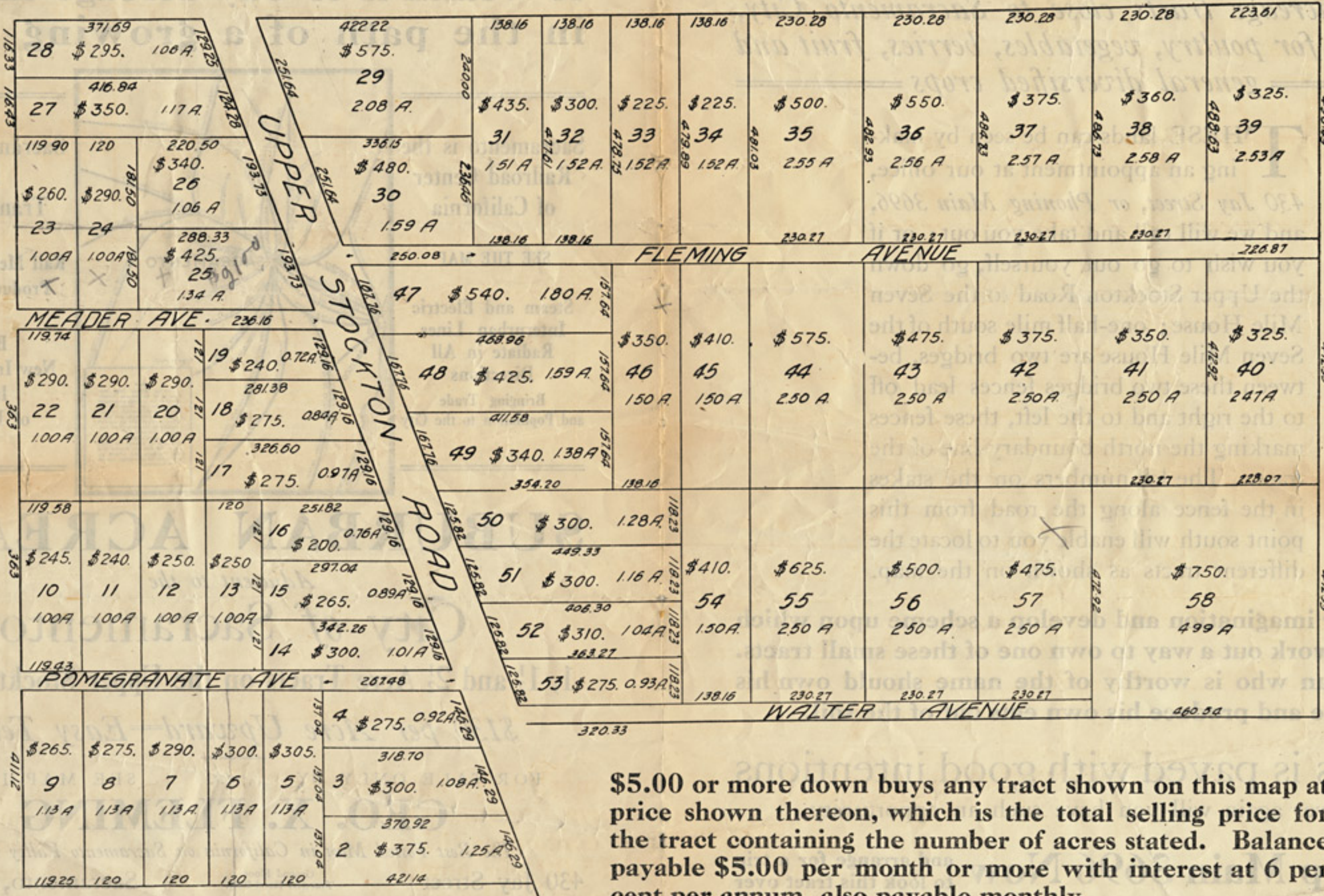
Never again will you have such an opportunity

Call up Main 3696 Now and arrange for a trip to look this tract over

MAP-S
c912
S12h
n.d.

Sacramento County. n.d.

MAP OF "HARKINS ACRES" 1, 1½, 2½ ACRE TRACTS



\$5.00 or more down buys any tract shown on this map at price shown thereon, which is the total selling price for the tract containing the number of acres stated. Balance payable \$5.00 per month or more with interest at 6 per cent per annum, also payable monthly.