

114 - 2/11/03 Sacramento County - 111  
1/12  
2/12  
1/12  
1/12

# EHRHARDT ACRES

MISSOURI STATE KITTS

---

**Lower Stockton Road**  
**15 Minutes from Our Offices**

---

**Root & Smith**  
Main 3225      603 J Street

# Fertile Acres

## STRAWBERRY LAND

## GRAPE LAND :: FRUIT LAND

The Soil is described in the U. S. Soil Survey as being a sandy loam, and is especially adapted to the culture of all kinds of Berries and Small Fruit.

## POULTRY GROWING

We strongly advise Poultry Growing. It does not require much capital to start and returns begin to come in sixty days' time. With proper care eggs can be had every day in the year, and frys, broilers, old hens and roosters always command a good price in the Sacramento markets, which are never overstocked.

## WATER

Water can be had in abundance at from 12 to 15 feet from the surface, and a small windmill pump or gas engine will supply all you need for intensive cultivation.

**5 Acres, \$375.00**

**\$37.50 Down, \$5.00 per Month**

California, Sacramento County, 1911 © 2003 CSL

M.P.S.  
C912  
5126  
1911

# Plat of EHRHARDT ACRES



LOCATED IN

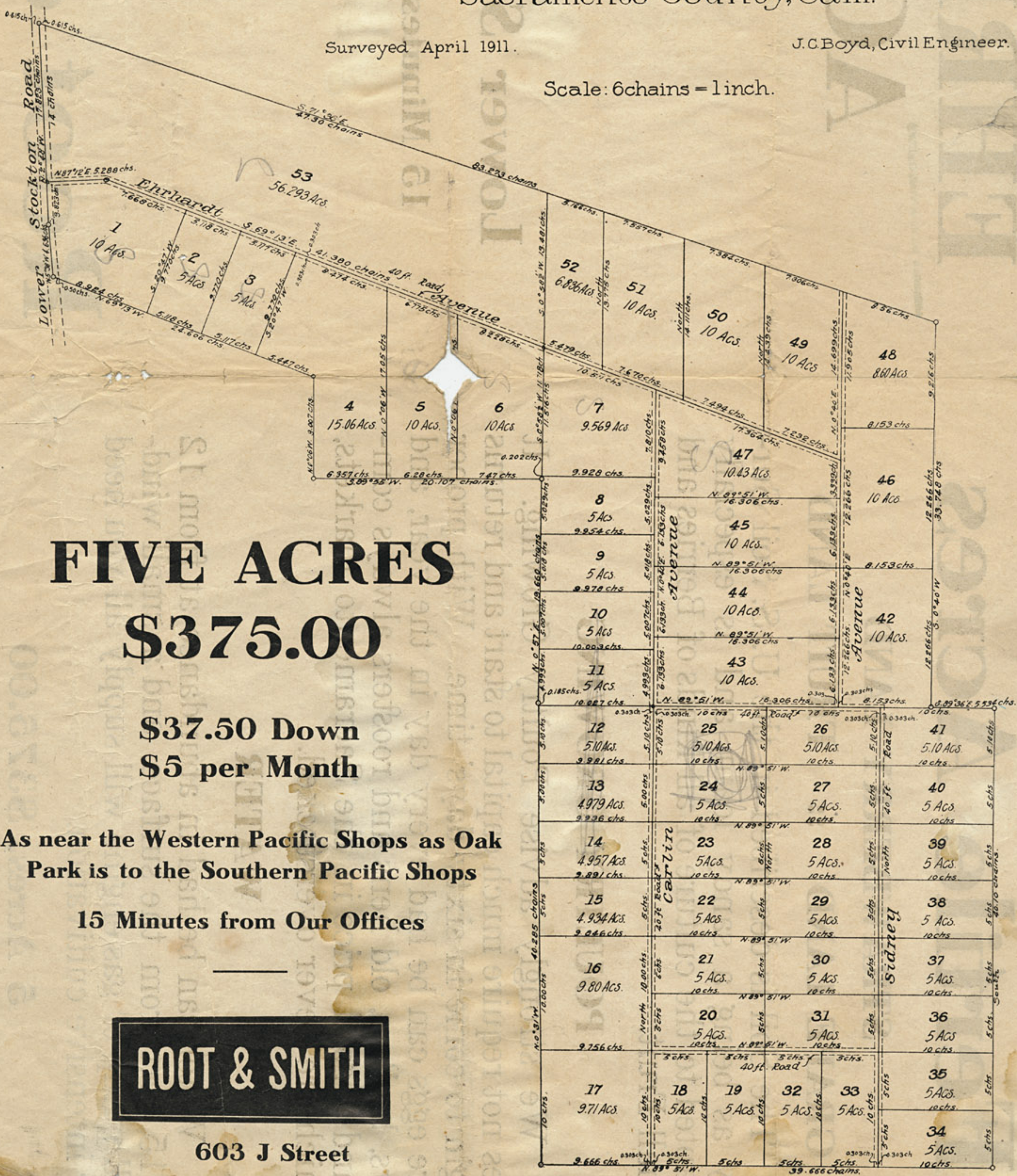
SECTIONS 16-17 OF T.7N.R.5E.

Sacramento County, Calif.

Surveyed April 1911.

J.C. Boyd, Civil Engineer.

Scale: 6 chains = 1 inch.



**FIVE ACRES**  
**\$375.00**

**\$37.50 Down**  
**\$5 per Month**

**As near the Western Pacific Shops as Oak  
Park is to the Southern Pacific Shops**  
**15 Minutes from Our Offices**

**ROOT & SMITH**

**603 J Street**