



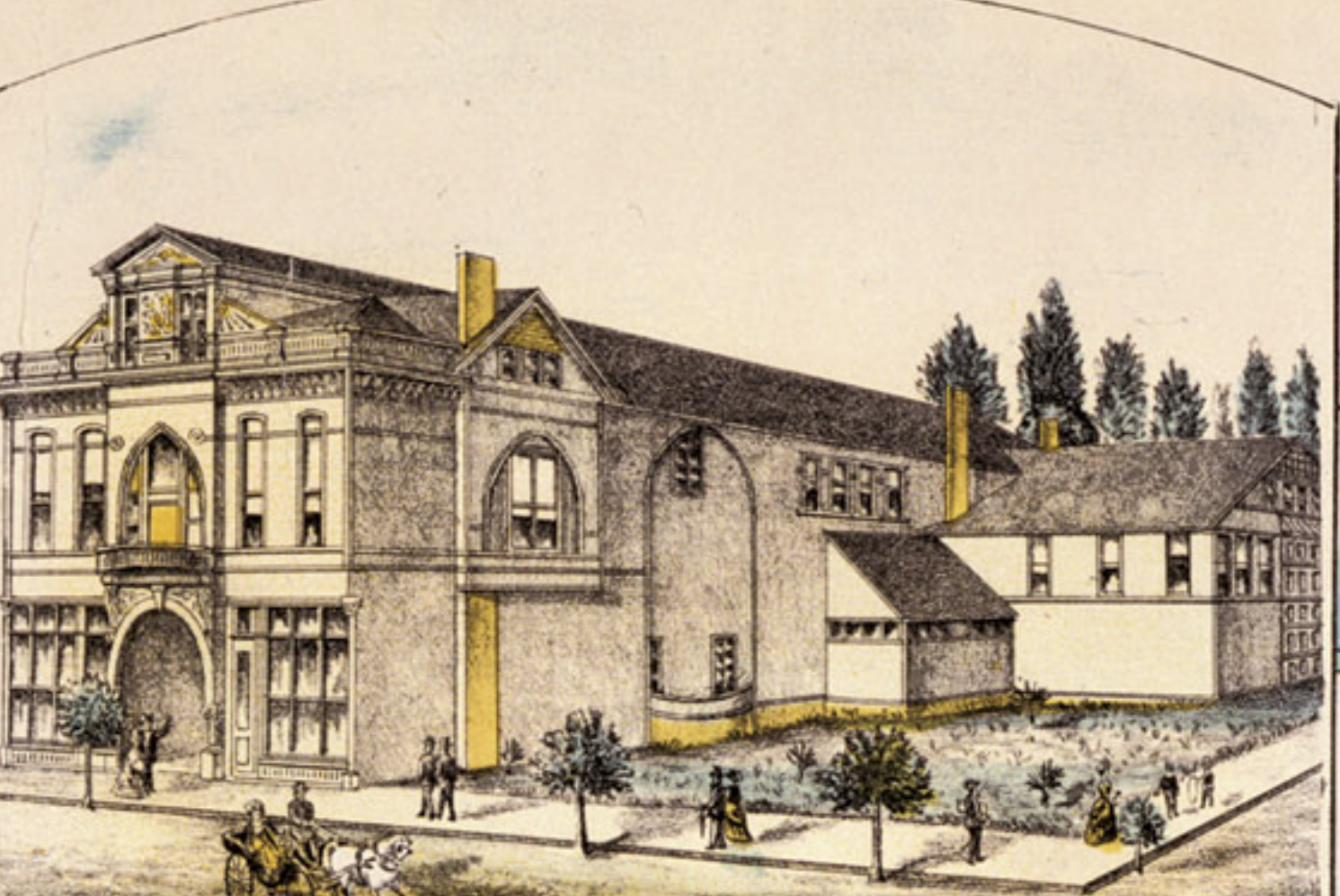
SIERRA NORMAL COLLEGE AND BUSINESS INSTITUTE. — Established 1882. M.W. WARD, Founder & Pres.



DRUG STORE OF G.T. NOE.



ST. TERESA'S CHURCH.



AUBURN OPERA HOUSE AND PAVILION.
Width, 55 ft. Depth, including stores and Opera House, 160 ft. Pavilion Annex, 40 x 60. Size of stage, 40 x 54.
Seating capacity of auditorium and gallery, 700. Finest arranged and finished theatre in California, outside of the cities.



INTERIOR VIEW OF THE PLACER CO. BANK.



J.N. MCCORMICK & SON. H.H. BUHRING.



FREEMAN'S HOTEL. — AUBURN, CAL.
This is the largest and most commodious hotel in Auburn. Electric lights in every room.
A free bus is at the disposal of the guests at all times to all parts of the city.

F. D. ADAMS, Notary Public,
Recorder of Records since 1873.

M. M. MURPHY.

F. D. ADAMS & CO.

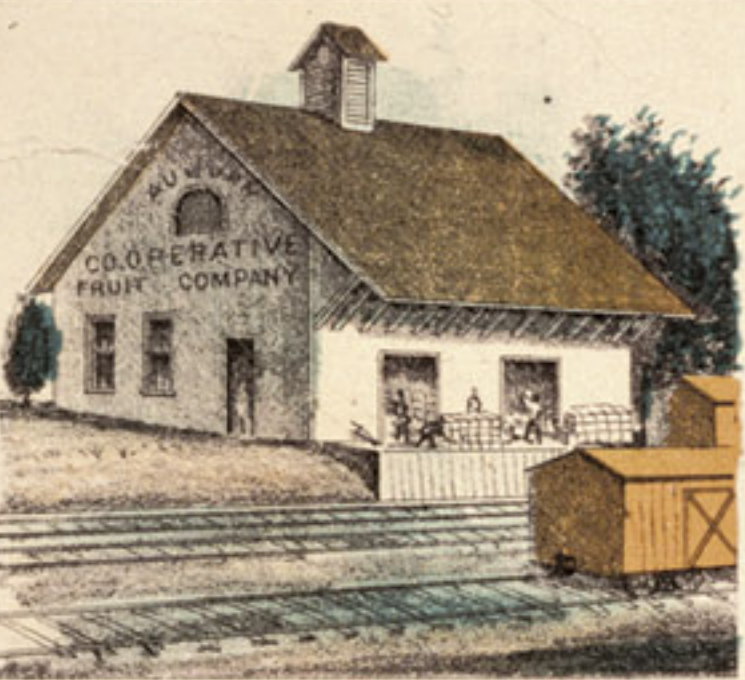
Searchers of Records.

Real Estate and Mining Brokers

Established in 1883.

Rooms 5, 6 and 7, over Stevens' Drug Store.

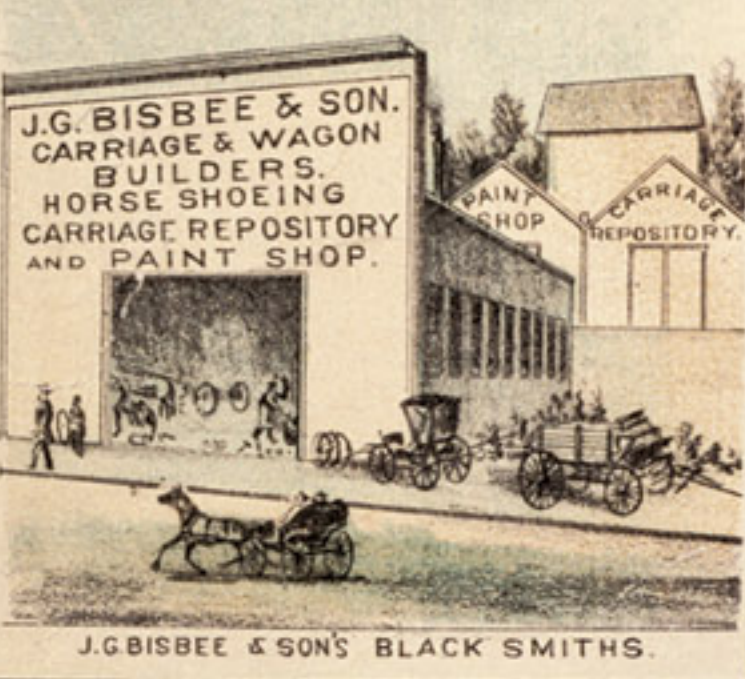
AUBURN, — Placer County, California.



AUBURN CO-OPERATIVE FRUIT CO. SHIPPING DEPARTMENT.



RES. OF REV. L.R. TORREY.



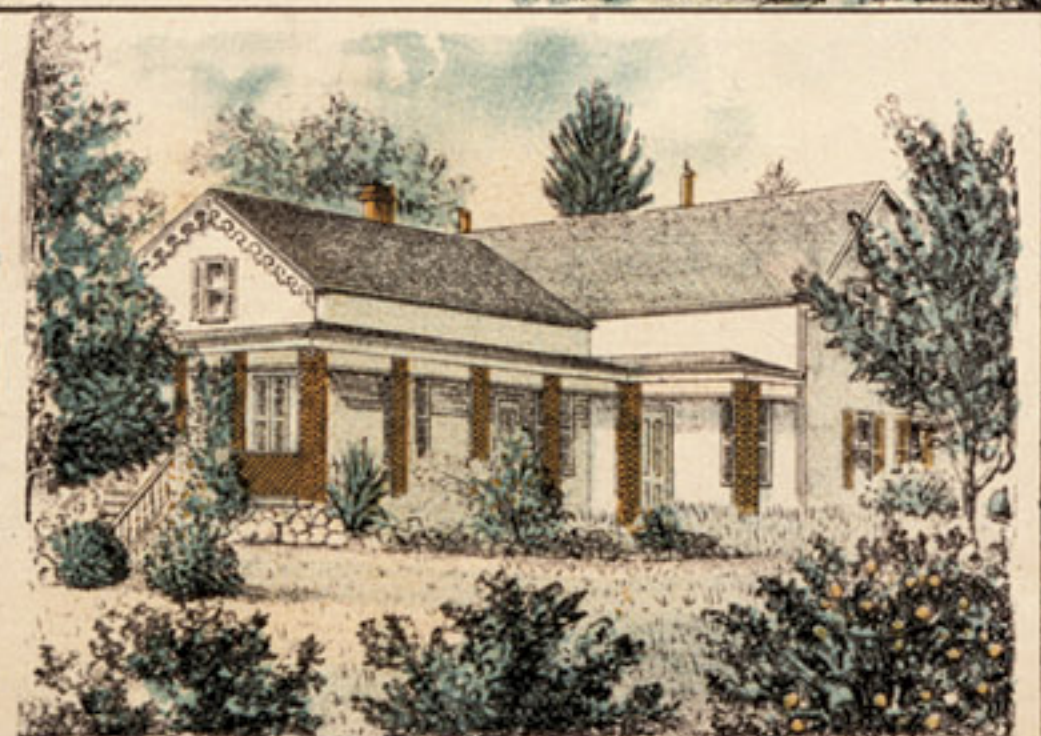
J.C. BISBEE & SON'S BLACK SMITHS.



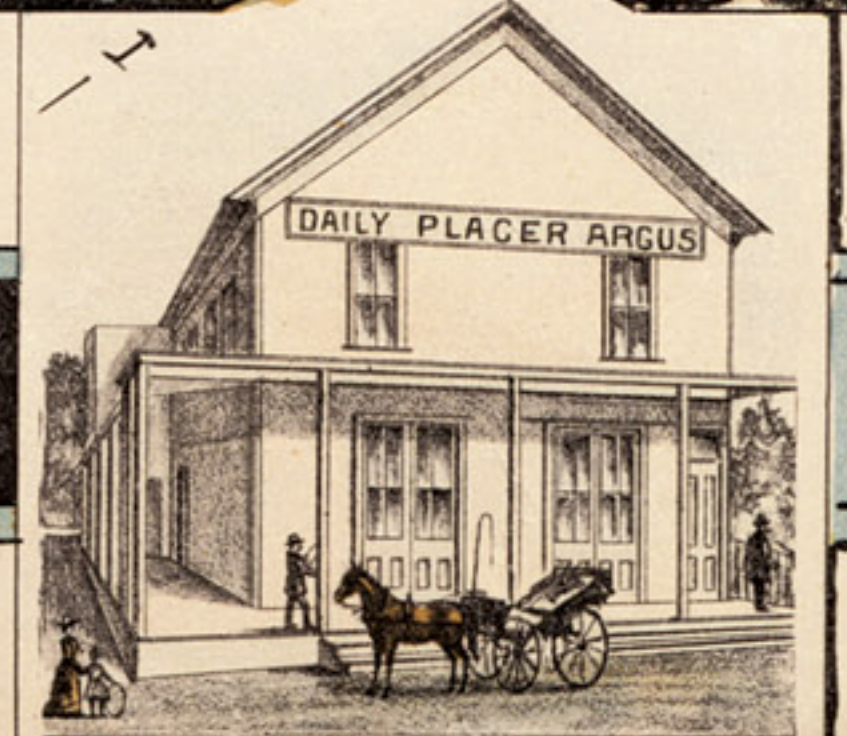
PUTNAM HOUSE.

Placer County, California.

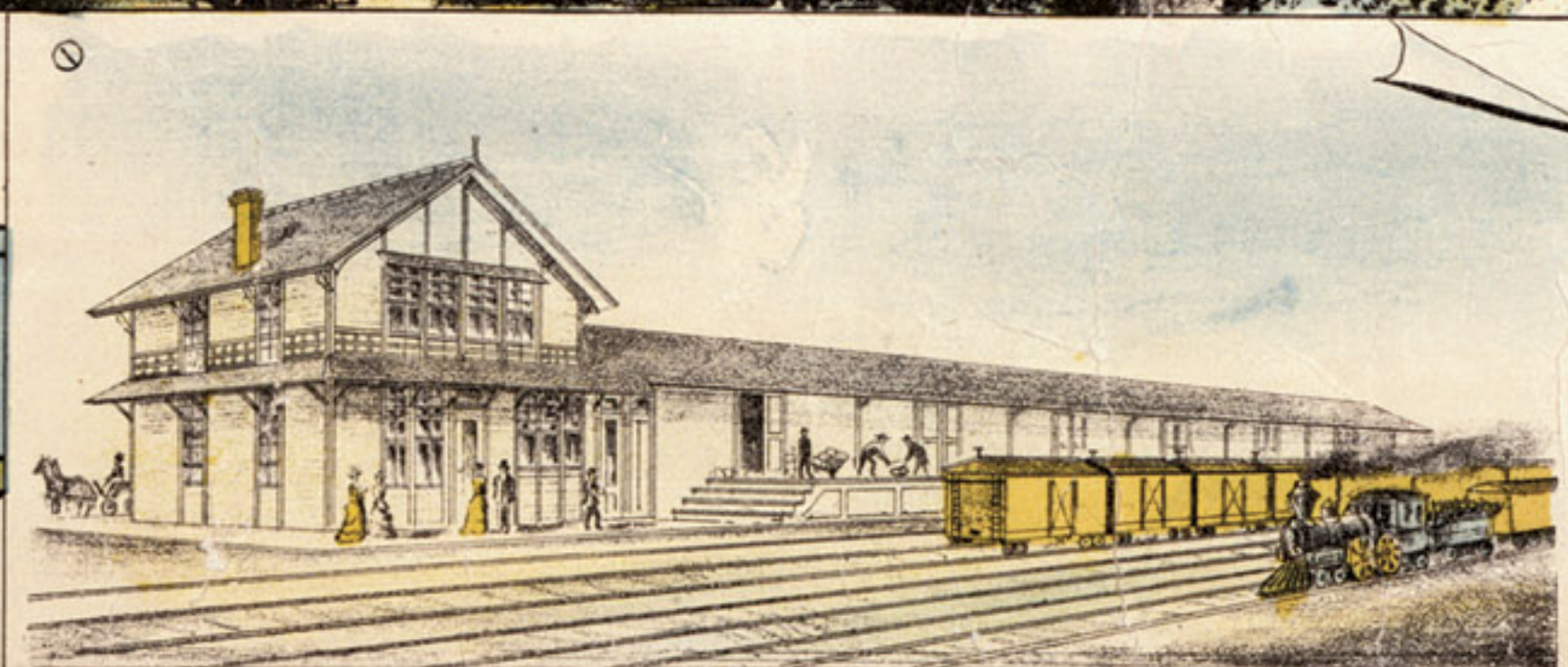
Placer County in area is larger than the State of Rhode Island. It extends from near the Sacramento River on the west in a north-east direction to the State of Nevada and Lake Tahoe, about 100 miles. The width varies from 10 to 30 miles. The adjoining counties in the north are Yuba and Nevada; on the south, El Dorado and Sacramento; on the west, Sutter. In altitude above the ocean it reaches from 100 feet in the western and agricultural portion to the Sierra Nevada Mountains, many of whose peaks are 10,000 feet high. The elevations of the towns on the railroad portion from 163 feet at Roseville to 7,017 at Summit. For convenience it may be described in three sections: mountain, foothill and valley. In the mountainous and mining are the chief industries. Fruits of all kinds flourish in the middle or foothill portion, the western portion being in the famed Sacramento Valley.



RESIDENCE OF W.B. LARDNER.



DAILY AND WEEKLY ARGUS, AUBURN, CAL.



NEW DEPOT NOW BEING CONSTRUCTED.



UNION STABLE. W.H. HOUGHINS, PROP.



AUBURN NURSERY. A.F. BOARDMAN, PROP.



ST. LUKE'S EPISCOPAL CHURCH.

- 1 Sierra Nevada Mts.
- 2 Canyon American R.
- 3 Ansel Heights.
- 4 Freeman's Hotel.
- 5 Depot & Express Office.
- 6 Housh's Stable.
- 7 Putnam House.
- 8 Argus Office.
- 9 Buhring Block.
- 10 Noe's Drug Store.
- 11 Opera House.
- 12 Res. W. B. Lardner.
- 13 Episcopal Church.
- 14 Congregational Ch.

BIRDS-EYE VIEW OF AUBURN

Placer County, Cal. 1891.

PRESENTED WITH COMPLIMENTS OF THE CITIZENS OF AUBURN.

128898

Auburn, Placer County, Cal.

The county seat of Placer County, Cal., is situated in the foothill portion, at an elevation of 1,360 feet, and is on the main overland route, the C. P. R. R., 35 miles from Sacramento, the capital, and 126 miles from San Francisco. Auburn was settled in 1849, and has long been noted for its beautiful scenery and as a health resort. The doctors throughout the State recommend its climate for those troubled with asthma and pulmonary troubles. Its elevation and fresh pure air make it peculiarly grateful to such. School facilities consist of public schools and the Sierra Normal College. Churches are Episcopal, Congregational, Catholic and Methodist. There are three weekly newspapers, and one daily—the Argus—the only daily in the county. There are seven large hotels, which entertain a first-class manner the local, traveling and health-seeking public. Stages run daily to Placerville and Georgetown in El Dorado County, and Forest Hill and other towns in Placer County. It is a large freight shipping station to the neighboring mountain towns. The wild rushing American River, in its canyon 1,000 feet deep, is only a half mile from railroad depot. Snow can be seen on the Sierra Nevada Mountains at present time. There is piped spring water for the town and surrounding hills. Three hundred feet of 15-inch pipe carries Bear River ditch water to a hill with reservoir of 1,000,000 gallons capacity, 348 feet above the postoffice; thence a 15-inch pipe 3,600 feet to depot, with fall of 140 feet; thence in a 6-inch pipe 5,200 feet to lowest part of town, with 220 feet fall, or a total of 960 feet from reservoir. This assures abundance of water for house, irrigation, fire, sewer and manufacturing purposes. All kinds of fruits and berries flourish here, deciduous as well as citrus. Bananas, rubber and camphor trees are growing in home yards. It is the natural home of the orange, olive and vine. The Auburn Orange Growers' Association has 30 acres of growing orange trees, also a few lemons, in their grove near Auburn, which when planted, was largest in Northern California. It will produce 75,000 oranges this year. Many acres of olives are in bearing near Auburn. The population of Auburn is 2,000, and growing fast. The Twentieth Agricultural District Fair holds yearly sessions at Auburn. At present one fruit house is in active operation. The new opera house and pavilion is a commodious structure, and would be a credit to any city five times the size of Auburn. The Tuttle Tract is a choice, centrally located piece of rolling ground, subdivided into building lots. Streets are being opened and water pipes will be laid to each lot. The tract is within five minutes walk of the depot. For building sites, more available locations cannot be had.

A modern poet could truthfully sing—
"Sweet Auburn! loveliest village of the plain,
Where smiling spring its earliest sign,
And parting summer's tints are seen."

Auburn Orange Growers' Association has 30 acres of growing orange trees, also a few lemons, in their grove near Auburn, which when planted, was largest in Northern California. It will produce 75,000 oranges this year. Many acres of olives are in bearing near Auburn. The population of Auburn is 2,000, and growing fast. The Twentieth Agricultural District Fair holds yearly sessions at Auburn. At present one fruit house is in active operation. The new opera house and pavilion is a commodious structure, and would be a credit to any city five times the size of Auburn. The Tuttle Tract is a choice, centrally located piece of rolling ground, subdivided into building lots. Streets are being opened and water pipes will be laid to each lot. The tract is within five minutes walk of the depot. For building sites, more available locations cannot be had.