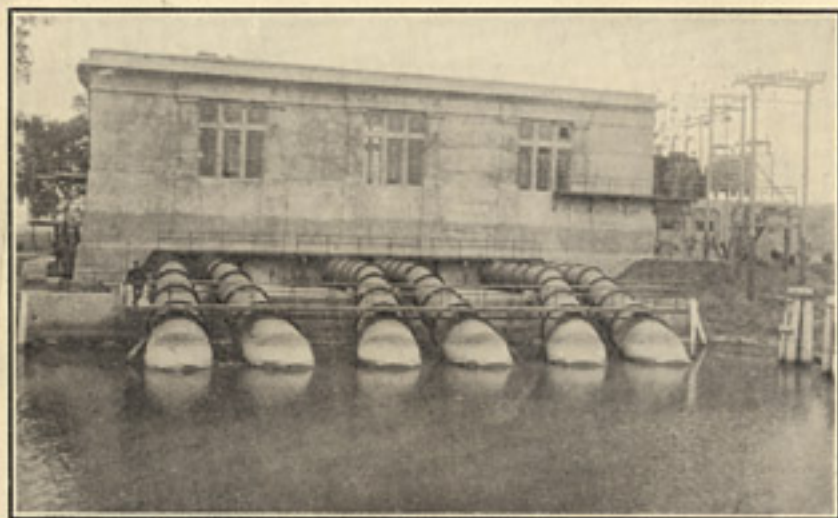


Sutter Basin Data

For details on **Sutter Basin Crops** send for our Circulars.

- | | |
|-----------------------|------------------------------|
| 1. Alfalfa. | 8. Double Cropping. |
| 2. Wheat and Barley. | 9. Beans. |
| 3. Pure-bred Stock. | 10. Vegetable Gardening. |
| 4. Dairying and Hogs. | 11. Irrigation and Drainage. |
| 5. Fruit Growing. | 12. Sugar Beets. |
| 6. Poultry Raising. | |
| 7. General Farming. | |



Drainage Pumping Station in Sutter Basin.

MEAN TEMPERATURES

(Sacramento U. S. Weather Bureau)

January	45.6 degrees	July	72.5 degrees
February	50.2 "	August	72.1 "
March	54.2 "	September	69.1 "
April	58.0 "	October	62.2 "
May	62.9 "	November	53.4 "
June	68.9 "	December	46.3 "

Mean Annual Rainfall 19.11 Inches

Finally: Sutter Basin offers a real opportunity for practical farming. The price of the land is based upon what it will produce. No additional charge is made because the soil is located in California.

Farmers on river bottom lands are always prosperous farmers.

OUR POLICY: Liberal Terms to Earnest Men.

SUTTER BASIN

"IRRIGATED
BOTTOM LANDS"

CALIFORNIA



Main Irrigation Pumping Station in Sutter Basin.

YOU MAY HAVE A FARM
HOME ON---

*"The Last of the Famous
River Bottom Lands"*



A Picture Taken at Maddock, Sutter Basin, December 18th, 1920, Showing the Southern Pacific Station at Right.

“The Last of the Famous River Bottom Lands” Complete With Irrigation Are Ready for the Settler

(Third Edition)

(This project has been submitted to the State Real Estate Commissioner and the title, water, and methods of sale have been approved by him.)

SUTTER BASIN “In the Heart of California” is being colonized. It is ready to become your home. This famous Sacramento Valley farming project about which so much has been written in newspapers and the farm press has complete irrigation and drainage systems. The soil has been thoroughly tested; the Southern Pacific Railroad has been built through the heart of the property and Sutter Basin, today, a region of diversified crops, is ready for the settler.

Just what was to be done with the rich lands of Sutter Basin has been a matter of speculation for a number of years—in fact, ever since development work was begun. The usual land subdivision

is on the market within a few months after work upon it begins, but Sutter Basin has been different. The Sutter Basin Company has been developing and improving the district for five years and proving the soil all that time. Sutter Basin has produced several bountiful crops. The entire area has been cultivated.

It was but natural that observing persons wondered what would become of Sutter Basin. Some thought it would forever remain the largest diversified farm in America. It has been that during the development period, producing all sorts of crops such as beans, winter vegetables, sugar beets, corn, rice and even some cotton. New settlers are now planting fruit trees and grape vines for “river bottom soil” is known to be the most productive of all fruit lands in California.

FOR INDIVIDUAL EFFORT

The owners of Sutter Basin wish their property to become a region of homes. They believe the soil is too rich and fertile to farm on a big scale. The individual farmer, owning his place, can get so much more out of the soil.

The owners of Sutter Basin are developers first and farmers second. If they



One of the Principal Irrigation Laterals in Sutter Basin.

can see upon Sutter Basin a community of farmers making a good profit upon their investment and an abundant return for their labor, then the owners of Sutter Basin will feel that their work has been worth while.

That is why Sutter Basin is being subdivided and is to be sold to the settler. It has now reached the point where it is ready to produce its maximum in crops.

TO WHOM IT WILL APPEAL

Sutter Basin will appeal to the man who likes to farm deep, rich, level soil that will grow any crop known to California agriculture.

Sutter Basin will appeal to the man who knows the satisfaction that comes from



Eighty-five Acres of Winter Lettuce in Sutter Basin.

getting a maximum yield with good farming practices.

Sutter Basin will appeal to the man who has seen his crops killed or reduced by drought, for Sutter Basin has a complete surface irrigation system, with the Sacramento River as the source of supply.

Sutter Basin will appeal to the man who knows the benefits of good drainage—for the drainage system is complete—more than 250 miles of canals and a gigantic pumping plant have taken care of that.

Sutter Basin will appeal to the man who has lost several seasons experimenting on raw land before he was able to find the right crop for the



Sutter Basin Potatoes.

soil. Sutter Basin has been cropped several seasons now, and the owners know what each acre will produce best. It is proven soil.

Sutter Basin will appeal to the man who knows the time to be gained by consulting experts who have been on the job and know the soil—for Sutter Basin has a corps of trained men who have superintended cropping through the proving period. These men will be available as farm advisers to the settler.

What crops have been grown in Sutter Basin? Almost every crop known to California Agriculture.

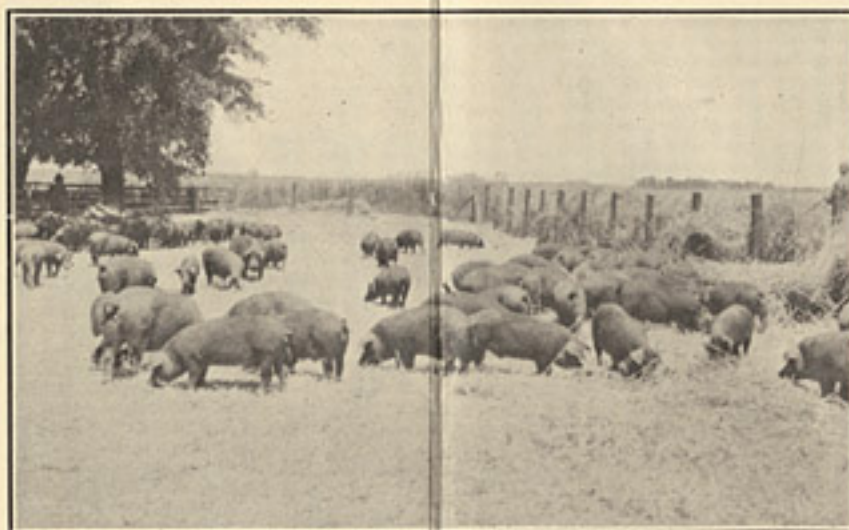
Here, however, are some of the more important crops:

BEANS—At one time about 35,000 acres.

WHEAT—100 cars, 1920 season.



Hauling Out Sutter Basin Onion Crops.



Pure-bred Duroc Jersey Hogs on a Sutter Basin Farm.

BARLEY — 1,100 cars, 1920 season.

POTATOES—Seed potato class—300 cars, 1920 season.

ONIONS—250 cars, 1920 season.

ALFALFA—1,000 acres now being planted.

CABBAGE—Mixed cars.

GREEN PEAS—40 cars, 1920 season.

SUGAR BEETS—200 carloads.

CANTALOUPE — 225 cars, 1920 season.

CASSABAS—50 cars, 1920 season.

PUMPKINS, SQUASH—15 cars, 1920 season.

LETTUCE—50 cars, 1920 season.

GARDEN TRUCK—Every variety in a 50-acre garden.



Sutter Basin Farms Have Sacramento River Transportation to the Big Market Distributing Points.

RICE—350 cars, 1920 season.
HOGS, SHEEP, TURKEYS, etc.

Wheat yields here have run up to 34 sacks (over 70 bushels) to the acre on 90 acres; barley yields to 45 sacks (90 bushels) to the acre on 515 acres. These are record yields for the 1920 season. From 16 to 26 sacks of wheat to the acre were common and from 25 to 35 sacks of barley to the acre. A 40-acre field of two-year-old alfalfa in 1920 yielded $9\frac{1}{4}$ tons to the acre. Vegetables and corn yields have been decidedly satisfactory and, after a season's test, the Sutter Basin Company this year (1921) is planting 2,800 acres to sugar beets.

It may be noted that this list includes many important crops that require rich deep soil. You will find that fruits are not mentioned in the list. This is because Sutter Basin is so new, but farmers, generally, know that Sacramento Valley River Bottom Lands hold the record for yields in quality of fruits. Several of our new settlers will plant prunes, peaches, pears, cherries and apricots this year. One man, a successful grape grower of Lodi, Calif., plans to plant 270 acres mostly to grapes.

Sutter County obtains record yields of canning peaches, prunes, pears and grapes. In 1920 shipment of canning peaches alone from Sutter County totaled 2,000 carloads. The entire output

was 40,000 tons. Send for our Circular No. 5 on "Fruit Growing."

In Sutter Basin there is a soil type fitted to every kind of crop produced commercially in California.

Here are the simple facts regarding Sutter Basin:

AREA—45,000 acres of river bottom land.

LOCATION—At the confluence of the Sacramento and Feather Rivers, approximately 22 miles from the City of Sacramento.

DRAINAGE—The entire district is drained by a series of canals (main canal, 18 miles; main laterals, $54\frac{1}{2}$ miles; sub-laterals, 190 miles), which converge at a gigantic pumping plant at the lower end of the district.

IRRIGATION—A complete surface irrigation system, with the Sacramento River as the source of supply, is owned by each acre. (The Land Owns the Water.)



Planting Seed Potatoes in Sutter Basin. Note the Rich Alluvial Soil, Which Is Ideal for Potatoes.

TRANSPORTATION—

Water transportation on the Sacramento River at easily accessible river landings. Superior transportation facilities by means of newly constructed (main line construction) Southern Pacific Railroad traversing entire length of tract (18) miles, with many miles of good lateral roads, intersecting railroad and reducing maximum haul to a minimum.



The Warehouse Would Not Hold Sutter Basin's Grain Crop,
So They Piled the Bags on the Levee to Await
the Coming of Steamers and Barges.

This branch line enjoys the Coast Terminal rates.

SOIL—The soil is an alluvial deposit, commonly known as "river bottom," the result of centuries of silt wash from the Sacramento and Feather Rivers. Its richness is proverbial.

CROPS—Almost every soil product known to California is being grown commercially in Sutter Basin; intensive dual crops of shipping vegetables—potatoes, cabbage, onions, lettuce, green peas, green beans, corn, etc. All intensively cultivated crops grown in California this year were produced on irrigated lands. Sutter Basin Lands own the water.

It would be possible to continue indefinitely about Sutter Basin. Agricultural writers have found it productive in news as well as in food for mankind. The meat of the story, however, is in our slogan:

"THE LAST OF THE FAMOUS RIVER BOTTOM LANDS"

for Sutter Basin is the last great body of alluvial soil, complete with irrigation, in the Sacramento Valley to be prepared for the settler.



An Immense Onion Patch in Sutter Basin.

RAY L. RILEY
COMMISSIONER

R. B. DUNLAP
DEPUTY

STATE OF CALIFORNIA STATE REAL ESTATE DEPARTMENT SACRAMENTO, CALIFORNIA

September 10, 1920.

Land Sales Department,
Sutter Basin Company,
Sacramento, California.

Gentlemen:

This department approves of your land sales project on the following conditions:

1st: That your salesmen shall be licensed to the licensed broker who is in charge of your sales department.

2nd: That all paid advertising shall be submitted to this department before its insertion and you are hereby authorized to insert in connection with such advertising, "This project has been submitted to the State Real Estate Commissioner and has been approved by him".

Yours truly,

RLR/ME

A fac-simile of the State Real Estate Commissioner's Letter
of Approval of Sutter Basin.

Write for prices and terms. You will be surprised to know of the liberal terms we offer to hard-working, capable farmers.

SUTTER BASIN COMPANY

Land Department

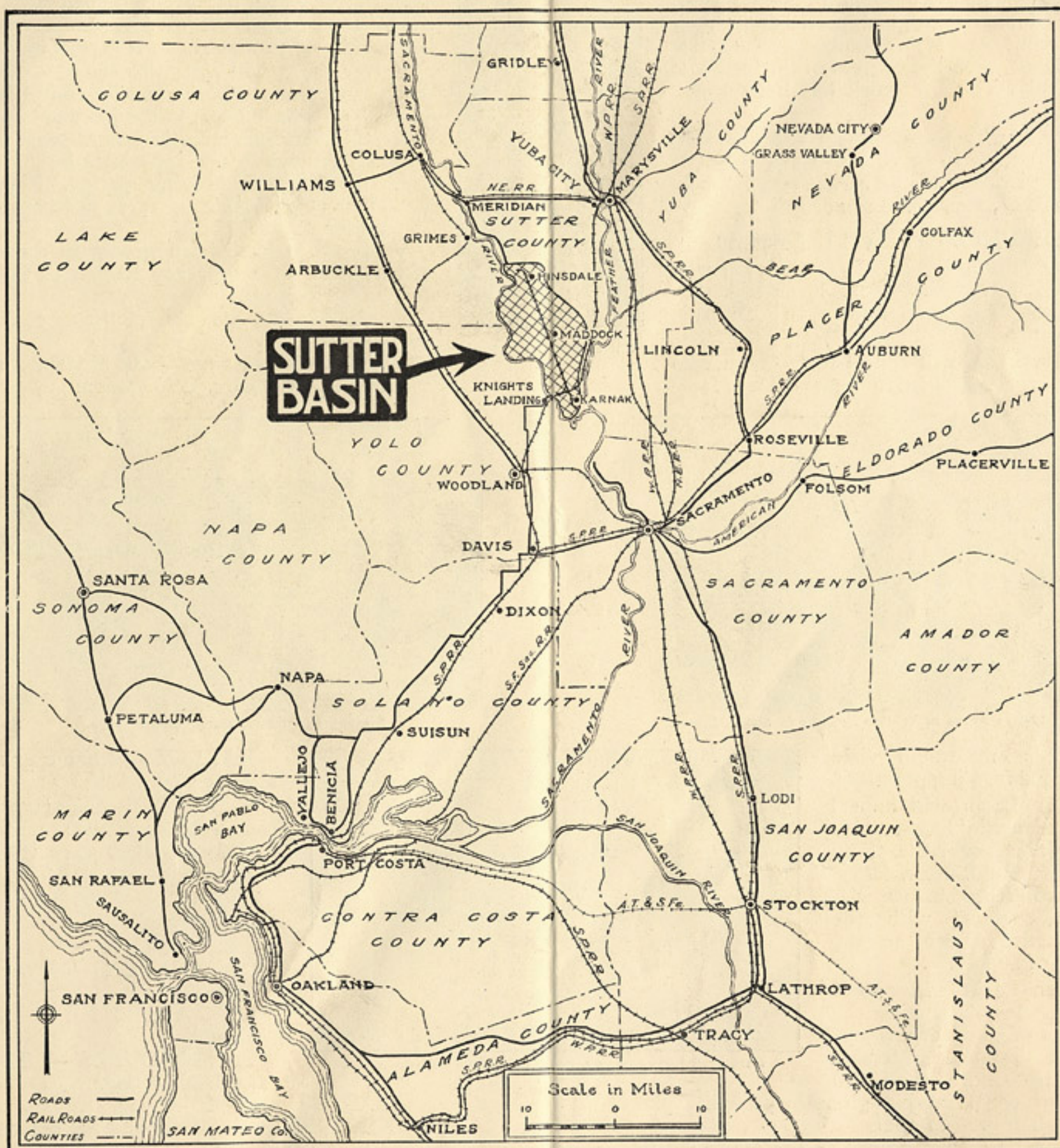
California Fruit Building

Fourth and J Streets

Sacramento, California



Harvesting Cantaloupes in Sutter Basin.



A Map of Central California Showing the Location of Sutter Basin, 100 Miles from San Francisco and 23 Miles from Sacramento, California.