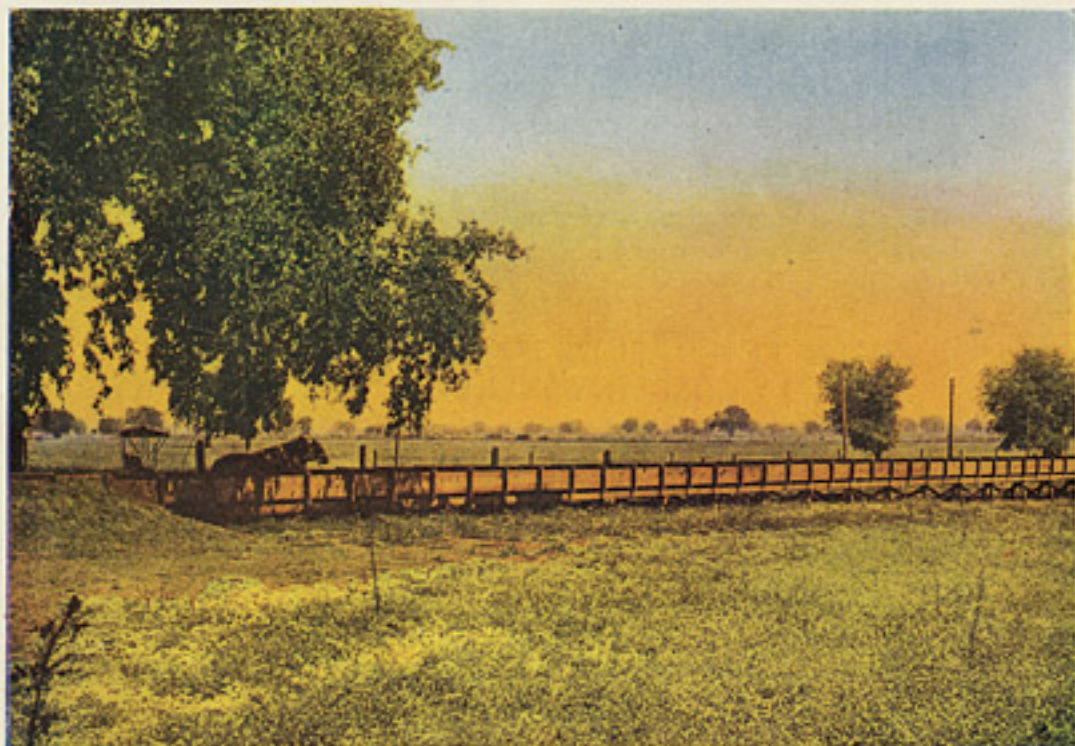


THE SACRAMENTO VALLEY

THE opportunity of the West today is in the fertile lands now coming under irrigation in the Sacramento Valley. This great valley is two hundred miles long and comprises two and a half million level acres. Water for irrigation is abundant and great canal systems recently built are ready to carry it to the land. Two hundred thousand acres are now ready for settlement, the prices are low and the values high, for these lands are in the heart of California, where the orange, the lemon and the olive are staple crops; where there are twelve months of growing weather every year; where alfalfa yields from four to six crops of hay every season.



Why live in storm swept lands when California invites? Why farm where the growing season is limited to three or four months, while better lands in a three-times better climate are calling for farmers? These lands, situated in the very heart of California, are for sale at reasonable prices. They can be purchased in tracts to suit, from one to a thousand acres; they are the best investment because values are certain to increase; they are the best for farmers to buy because fertile soil and California climate assure large crops, while nearby markets and excellent transportation facilities assure good prices.

Complete information upon application

SACRAMENTO VALLEY DEVELOPMENT ASSOCIATION

Representing the following counties of California
BUTTE, COLUSA, EL DORADO, GLENN, PLACER, SACRAMENTO, SOLANO,
SUTTER, TEHAMA, YOLO AND YUBA

1008 Fourth Street, Sacramento, California

This is an organization of the counties of the Sacramento Valley, supported by moneys appropriated from the County Treasuries and by personal subscriptions. Its purpose is to assist those who seek homes and investments here. It has nothing to sell. Write for complete information.