

Sacramento Has Most Modern and Sanitary Meat Packing Plant West of Chicago



PANORAMIC VIEW OF THE STOCKYARDS AND PACKING HOUSE OF C. SWANSTON & SON, SHOWING HUNDREDS OF HEADS OF CATTLE BEING UNLOADED FROM FREIGHT TRAIN.

Possessing vision and unbounded faith in the future of Sacramento Valley, Mr. C. Swanston in 1886 established a large meat packing plant and abattoir south of the City of Sacramento, along the river.

From the opening of the plant, SERVICE was made the keynote of the business—SERVICE TO THE GROWERS, SERVICE TO THE CONSUMING PUBLIC.

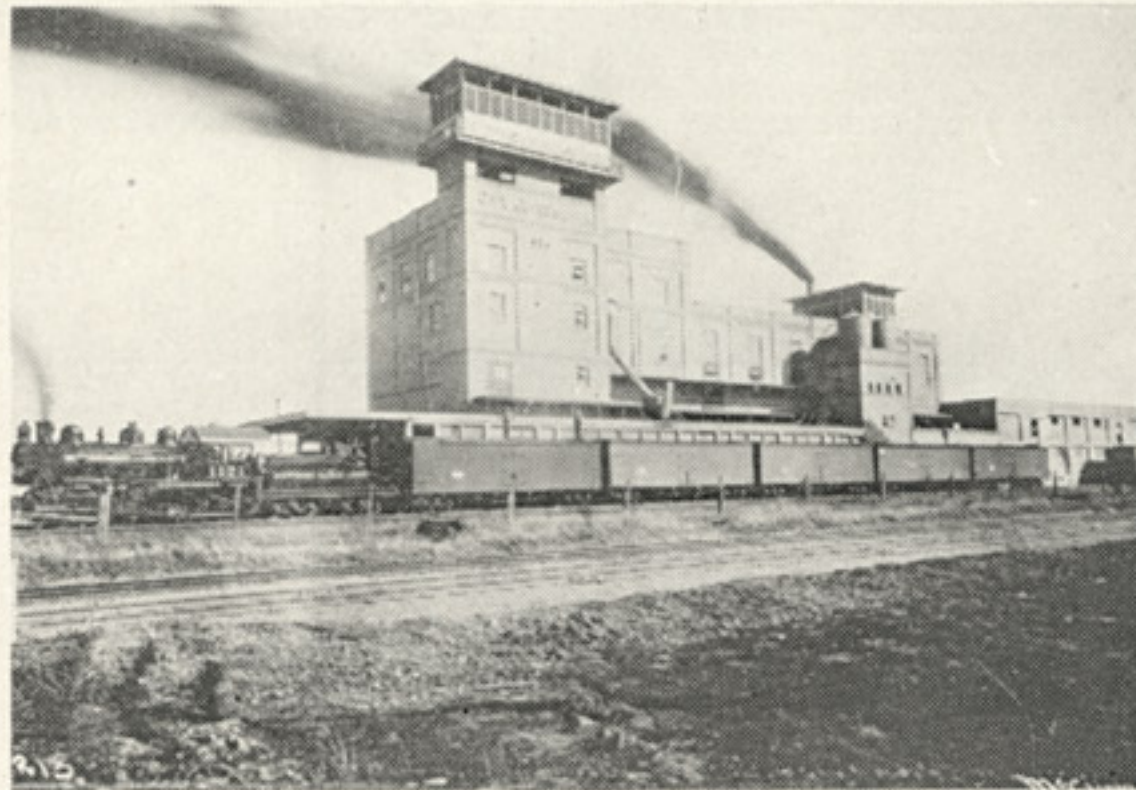
Steady growth marked the business, until in 1915 it had far outgrown its quarters, both plant and yards being inadequate to handle the big volume of business, largely due to KEEPING

FAITH WITH THE GROWERS and GIVING SERVICE AT ALL TIMES.

Late in 1915 the splendid new plant at "SWANSTON," North Sacramento, embracing the most modern of sanitary meat packing devices, was opened. Model yards provide accommodations for thousands of heads of livestock. Connections with three railroads provide ample transportation.

The government inspector has pronounced the SWANSTON PLANT the MOST SANITARY WEST OF CHICAGO.

*Extensive
Buyers
and
Growers
of
Livestock*



VIEW OF THE MODERN, SANITARY MEAT PACKING PLANT OF C. SWANSTON & SON, NORTH SACRAMENTO.

*Distributors
of Fresh
Meat and
Packing
House
Products*

C. Swanston & Son, Inc.

Wholesale Meat Packers

UNDER UNITED STATES GOVERNMENT INSPECTION, ESTABLISHMENT NO. 799

Sacramento, California

MAIN OFFICE
306 NICOLAUS BUILDING
PHONE MAIN 780

SAN FRANCISCO BRANCH OFFICE
AND SALESROOM
RHODE ISLAND AND DIVISION STREETS

FREIGHT CONNECTIONS WITH SOUTHERN PACIFIC, WESTERN PACIFIC AND SACRAMENTO NORTHERN RAILROADS