



SWEET CORN



ALFALFA — SECOND CROP
SOWN — MARCH 8TH 1909
FIRST CUTTING JUNE 7TH
PHOTOGRAPH TAKEN JULY 16TH



BEANS

THE ORLAND UNIT PROJECT

By S. F. Reager, Secretary Orland Water Users' Association

The exceptional advantages afforded by the Sacramento Valley for irrigation and profitable home-making, attracted the attention of the engineers of the United States Reclamation Service shortly after the passage of the Reclamation Act, under which great irrigation works are now being built by the Federal government in several Western States, and led to the acceptance of the Orland Unit Project, so called because it is the first of the series of contemplated units, comprising a great Sacramento Valley project.

Fertile lands and mild, equable climate led to the selection of the Orland area as the place of beginning. About five hundred acres are already under irrigation from small canals using the summer flow of Stony Creek, and the crops grown on these lands attest the suitability of soil and climatic conditions. The climate is especially favorable to the growth of oranges, lemons and other tender fruits.

The Orland Project will irrigate 14,000 acres at Orland, Glenn County. The source of the water supply is Stony Creek, the principal tributary entering the Sacramento from the west. The principal feature of the engineering works will be a great storage dam at East Park on Stony Creek, which will impound a portion of the abundant flood waters of that stream. The system will be in full operation in 1911. The lands to be irrigated lie on both sides of Stony Creek, near the west side of the Sacramento Valley. The soil is composed of detritus washed down from the Coast Range Mountains and deposited there through the ages by this stream.

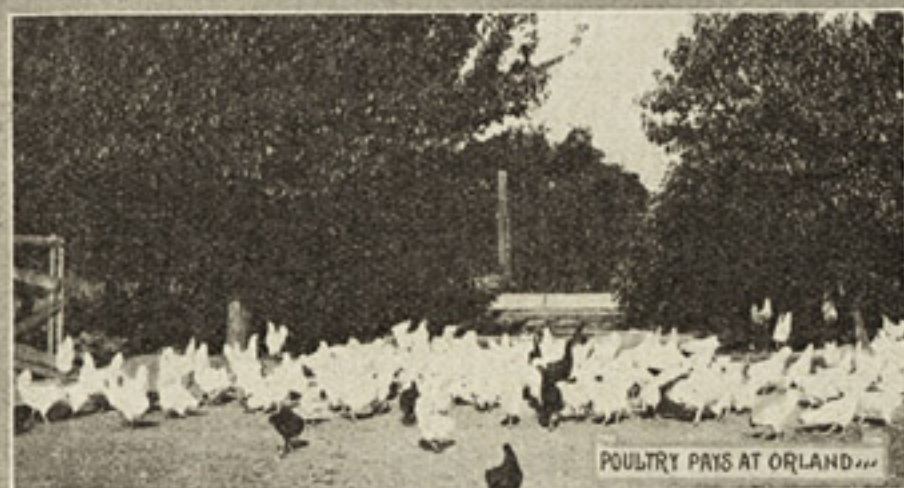
A soil survey of this district has been made by the United States Department of Agriculture and soil maps are published which can be had upon application. Near the point where the stream debouches upon the plain there is a considerable percentage of gravel which becomes finer toward the east and south, graduating to pure



DEMONSTRATION GARDENS
OF U.S. RECLAMATION SERVICE — ORLAND UNIT PROJECT



THE ORLAND CREAMERY



POULTRY PRIS AT ORLAND...



ALFALFA HAY

loam. The area now under irrigation is all gravelly soil, the value of which is attested by the finest oranges, lemons, olives and other fruits and by productive and profitable alfalfa fields.

Alfalfa is the favorite crop on irrigated lands, at Orland producing five or more cuttings annually and yielding a net return ranging as high as \$40 an acre. This will be increased when there is plenty of water. At present, the water supply becomes short late in the season and alfalfa fields are not irrigated after August. The storage dam, now being built by the Reclamation Service, will materially lengthen the alfalfa season and increase the yield and profits.

Oranges and lemons of the very best quality are grown and will be important crops under the new project.

Almonds are a profitable crop, netting from \$60 to \$100 an acre. English walnuts, grapes, deciduous fruits and berries and garden crops of all kinds are profitably grown.

Poultry is grown extensively, and is very profitable. A modern creamery furnishes a local market for cream and offers to alfalfa growers an opportunity to double their returns from their crop.

The lands of the Orland Project are all in private ownership and titles as a rule are perfect. Prices range from \$75 to \$100 an acre, with the cost of the water to be added. Under the terms of the Reclamation Act the system will be built by the Federal government and the cost assessed to the land, to be paid in ten annual installments without interest, after which the works will be turned over to the land-owners. It is estimated that the cost will be about five dollars an acre a year until the works are paid for—the present irrigators are paying \$3.50 an acre a year for the use of the water alone through a short season, and are making good money at that.

The Water-Users' Association is a corporation composed of the owners of the lands to be irrigated, and represents its members in all dealings with the government. Full information regarding the project will be furnished upon application to it.



A YOUNG FIG ORCHARD



PUBLIC SCHOOL



ALFALFA - THIRD CROP



GROWING FAST



IRRIGATING A LEMON GROVE - ORLAND UNIT PROJ.