

HARVESTING POTATOES  
KRAFT RANCHHEAD OF NAVIGATION  
RED BLUFF

APRICOOT ORCHARD AT CORNING



A TEHAMA COUNTY FARM HOME



TEHAMA COUNTY HIGH SCHOOL



ORANGE ORCHARD AT CORNING

THOROUGHBRED HEREFORDS  
ON THE CONE RANCH

## RED BLUFF

By J. D. Sweeney

Red Bluff, the county seat of Tehama County, is situated upon a bluff on the west bank of the Sacramento River, at the head of navigation, about 125 miles north of Sacramento.

As a division point of the Southern Pacific Railway, enjoying the advantages of cheap water transportation rates, it has exceptional facilities for the handling of freight, and is an important shipping point.

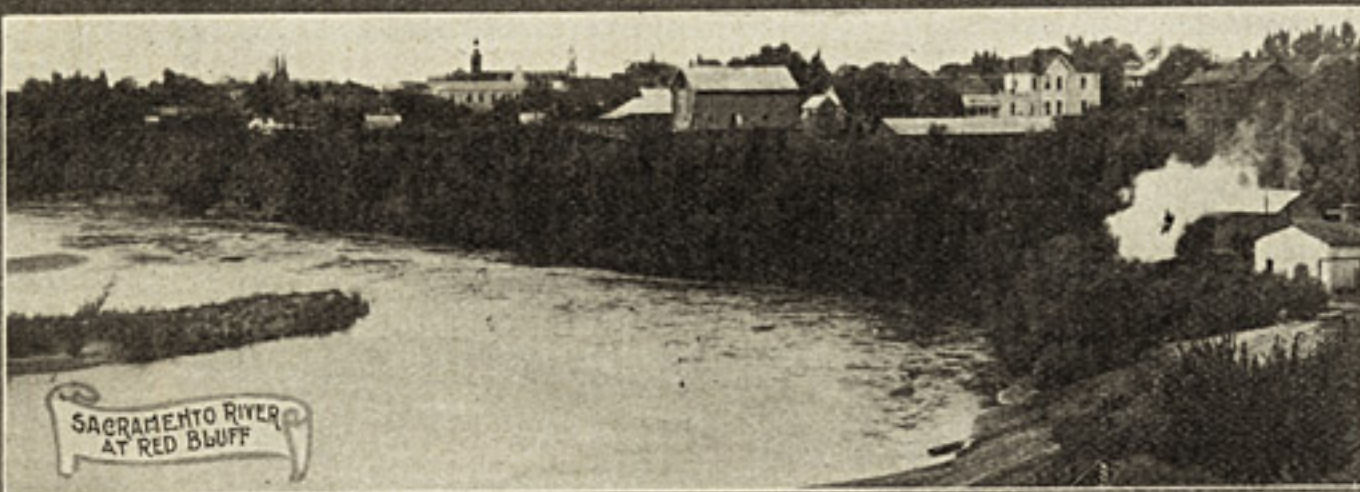
The streets of the city are wide and well graded. There is an excellent school system of three large buildings and twenty teachers. The city has several miles of cement sidewalks, electric lights, a good drainage system, and an excellent fire department. There are good churches, a commodious opera house and a new public library, a gift of Mrs. Herbert Kraft, which rivals those of cities many times larger. Population numbers about 4,000 and is increasing rapidly. Substantial and elegant homes are an evidence of the thrift and comfort of the citizens.

Several industries give employment to many people, among them an ice factory, flour mill, foundry, planing mill and fruit-packing establishments, the latter giving employment in season to many women and children. There are two banks, three daily papers, good hotels, livery stables, and many mercantile establishments.

The source of life of the town is the county as a whole. The pursuits and products are numerous and varied. The mountains yield timber, which is sawn at Lyonsville and flumed forty miles to the Diamond Match Company's planing mill at Red Bluff. The plains and foothills are devoted largely to grazing sheep and cattle and to raising hay and grain. Fruit is a leading product of the county. The Bartlett pear orchard on the Cone ranch near Red Bluff is one of the largest in the State and has been declared by representatives of



A RED BLUFF CHURCH



SACRAMENTO RIVER AT RED BLUFF



IRON CANYON Where a great dam is to be built by the U.S. Reclamation Service.

the United States Department of Agriculture to be the finest orchard in this country. This county produces more peaches than any other Sacramento Valley county.

Much of this fruit is shipped from Red Bluff. Corning, Tehama and Vina are also important fruit-shipping points. Grapes are grown extensively. The Stanford vineyard at Vina is one of the largest in the world. The county produced nearly 5,000,000 pounds of prunes in 1908. Olives do well. The apples of Manton are famed.

Alfalfa is the staple farm crop and large areas are devoted to its growth near the river and in irrigated districts. Watermelons, tomatoes, potatoes and other varieties of garden vegetables thrive. River bottom land is adapted to sugar beets.

Under the present system of farming, but one crop a year is possible on much of the land of this county, which with irrigation would yield several crops annually

The Iron Canyon Irrigation Project contemplated by the United States Reclamation Service, for which surveys are now being made, is designed to irrigate 100,000 acres or more lying on both sides of the river south of Red Bluff. As a whole, this project involves the building of a great dam across the Sacramento River seven miles above Red Bluff and extensive canal systems down both sides of the valley from that point. Over four thousand 25-acre farms may be irrigated from these canals when built, providing farms and homes for twenty thousand people.

The average rainfall in Tehama County is nearly thirty inches, ample for all purposes were it distributed at proper intervals. As it is, the county has never had a failure of crops. With the wise distribution of water by irrigation, with the climate of the valley unsurpassed for the growth of plant life, there will be no end to the production of the county. Great ranches are being subdivided into farms and offered for sale. Some of the finest lands in this county with water ready for use are now being offered.



HERBERT KRAFT MEMORIAL LIBRARY



THE FINEST PEAR ORCHARD IN THE WORLD.



OPERA HOUSE



GRAMMAR SCHOOL



PRUNE ORCHARD KRAFT RANCH



TREMONT HOTEL



WOOL IS AN IMPORTANT PRODUCT