

Resources
of YOLO COUNTY
CALIFORNIA



Pointe San on Cuckoo Creek, Cal.

RESOURCES OF YOLO COUNTY, CALIFORNIA

Every day may be a day of productive labor in field or barn, in orchard or dairy. The climate also means a variety of productions, and in this county we have the whole gamut of vegetable life.

The average summer temperature of Yolo is 77.7 degrees; the average winter temperature is 48.3 degrees; average mean, 62.8 degrees. It is on or near the line of contact of the coast winds with the heated air of the interior, and its climate is a blend of the two conditions. The effect of the sea breeze is felt in Woodland about 3 o'clock, and by nightfall the temperature ranges from 65 to 72 degrees, just cool and just warm enough for physical comfort. The coast wind reaches Yolo county in two ways, one direct from San Pablo bay, but 50 miles away, and through the Putah creek pass from Napa valley. It is stripped of its moisture, but retains the freshness of the sea. This inversion or blend of the atmosphere continues every day through the summer, excepting only on those days when the north wind stands as a wall against the sea, and at such times it is hot on the bay of San Francisco and all along the coast.

Indeed, the climate is so equable that the county is a perennial paradise of flowers, every plant known to floriculture flourishing in riotous profusion throughout the year. Roses and lilies, violets and carnations continue in fragrant bloom throughout the months of December, January and February.

The homeseeker who wants a home where there is almost perpetual summer, where fruits and flowers

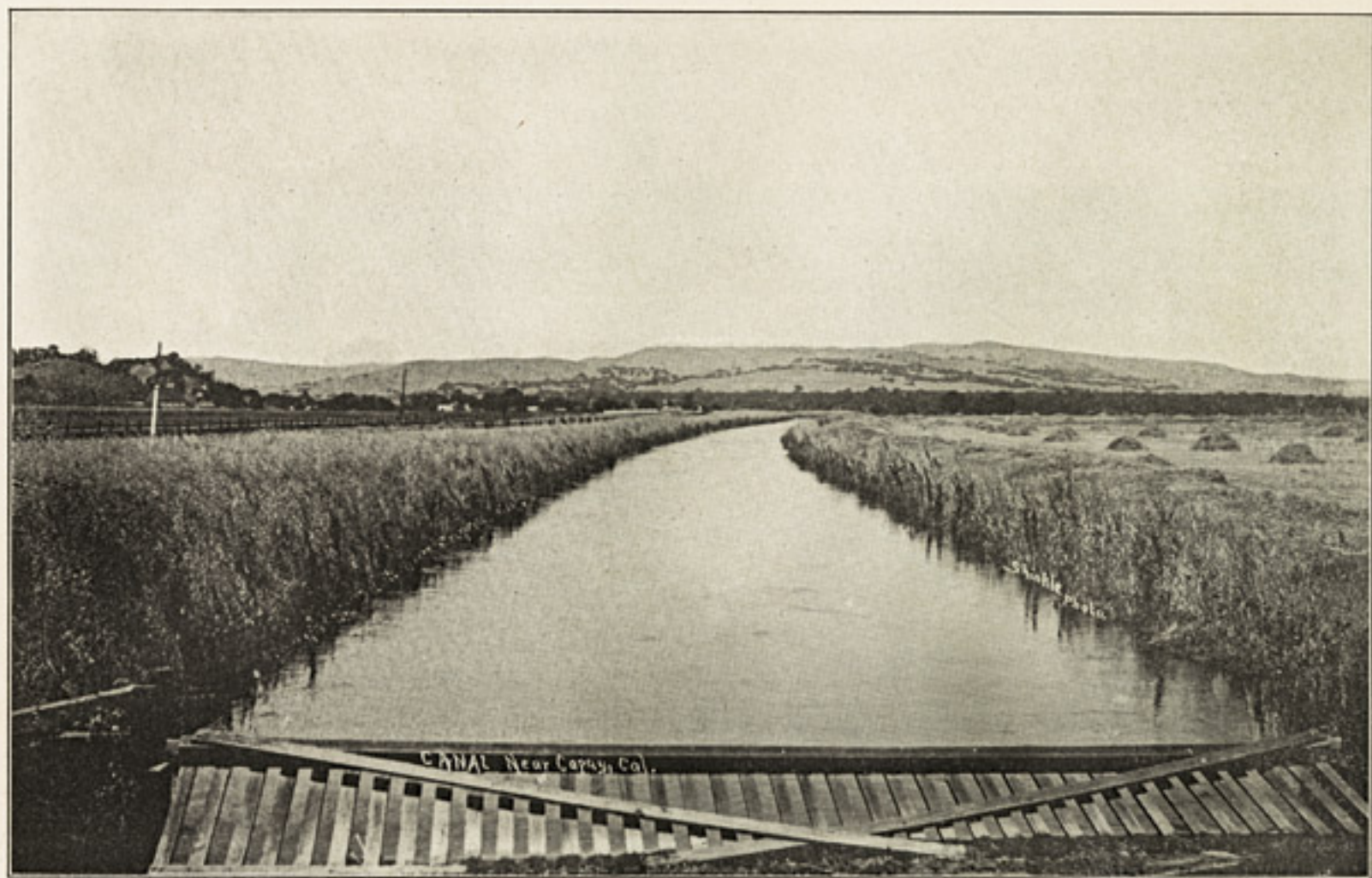
have a continual growth and where perfect climatic conditions exist all the year round, it is well worth his while to investigate conditions in Yolo county.

Splendid Irrigation Facilities

Of the practical value of irrigation it is not necessary to speak. It long ago passed its experimental stage. Its value has been demonstrated and the facts which place this value beyond all controversy belong to the realm of ascertained knowledge. It is true that horticulture has been and may still be pursued with profit in Yolo county without the aid of irrigation, but both yield and quality can be vastly improved by the artificial application of water; in fact, may be augmented in an untold ratio. Besides, it removes all doubts and uncertainties that may arise from lack of sufficient moisture or unequal distribution of the rainfall.

Government engineers are on record as conceding that topographical, physical and hydrographical conditions are such that a more economic, comprehensive and profitable irrigation system of irrigation can be developed in Yolo county than anywhere else on the Pacific Coast.

The Yolo County Consolidated Irrigation Company system now covers about 80,000 acres, but only the inception of this great enterprise has been witnessed. It is possible to so enlarge and extend this system, by acquiring natural reservoir sites and by



IRRIGATING CANAL IN YOLO COUNTY



FLOODING ALFALFA LAND IN YOLO COUNTY

RESOURCES OF YOLO COUNTY, CALIFORNIA

the conservation and storage of water that 200,000 acres may be cheaply and effectively irrigated at all seasons of the year. J. M. Wilson, government engineer, declared that the irrigation possibilities in Yolo county are unequaled anywhere in the West, and Engineer Bennett is equally as optimistic about the latent opportunities for irrigation development. When the system is fully developed both the original cost and the cost of maintenance will be less than in any other place in all the arid West. The average rainfall per annum is about 18 inches.

In Yolo county it is not always necessary to resort to the artificial application of water, but when the facilities for irrigation are available all elements of

chance are eliminated. The farmer or fruit-grower who lives within an efficient system of irrigation and in a country where there is generally a generous rainfall can calculate on a full crop whether it rains or not. The effect of this certainty is to almost revolutionize farming operations. The tiller of the soil will undertake enterprises from which he would otherwise shrink for the reason that the risk involved would be greater than he could afford to take. In Yolo county the irrigation system is both permanent and efficient and under its magical influence the county is destined to take a rank to which she is entitled by reason of her unrivaled advantages, natural resources and splendid opportunities.



A SHOW HERD OF YOLO COUNTY HOLSTEINS