

# Live Stock Industry

---



THE live stock interests of Yolo county are of great importance. The inducements for stockmen to engage in this industry are of an extraordinary character. Horses, cattle, sheep, hogs and poultry thrive the year round in the open fields and are remarkably free from disease. The abundance of feed and climatic conditions make it a pleasant as well as a profitable occupation.

## HORSES

Climatic conditions here are especially favorable for horse breeding and this section of the state has furnished some of the world's greatest sires and dams. During the recent wars it is claimed that Yolo county furnished more horses and mules for Cuba, the Philippines and South Africa than any other county in the state. Yolo county mules have been in great demand in Honolulu, Australia, the Fiji Islands and South America.

Edward Corrigan bred horses in this county that he raced in England. Barney Schreiber, John Mackay and others maintained stock farms here and sold their horses in Europe, and South America.

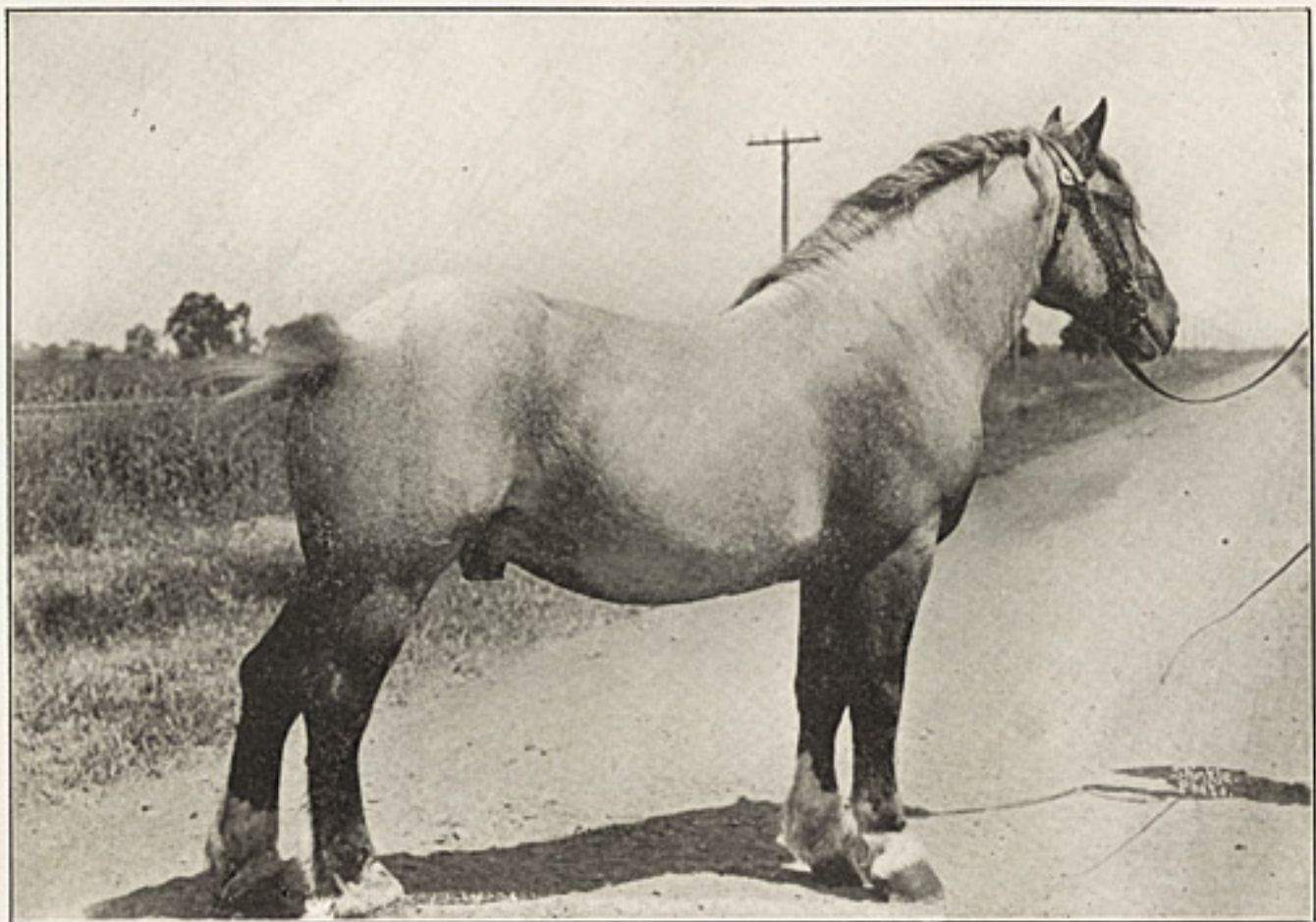
The progeny of Lily Wright and Button have given the county a national reputation. Some of the very best stallions ever brought to this state were quartered here.

The superiority of our horses is accounted for by the fact that the foals have nearly four months continuous sunshine and are stimulated by the richest food until they accumulate a surplus of energy, as a result of which they develop early and mature rapidly.

The assessor figures that the valuation for assessment purposes of all grades in the county is nearly \$400,000, and of mules, jacks and jennies nearly \$300,000.

## SHEEP

Yolo county first became famous for her fine sheep when the late Jason Watkins began to ship fine Merino bucks to many parts of the world. The late J. H. Glide's noted Spanish and French Merinos served to increase interest in the industry. The Bullard Estate also did as much as any other one agency to advertise the stock possibilities of the county. The Delaine Merino breeds were the first ventures. For a quarter of a century they bred Spanish Merinos and accomplished results in the



YOLO COUNTY DRAFT STALLION



A GROUP OF YOLO COUNTY SHORTHORN BULLS

## RESOURCES OF YOLO COUNTY, CALIFORNIA

matter of creating a pure breed, never before compassed anywhere. They next introduced on the Pacific Coast the Rambouillet Merino, a German breed, which rapidly grew in public favor.

The Shropshires and other breeds are also well represented and other farms that have been expert breeders are Roselawn, Enterprise and Seven Oaks. Bucks from Yolo county have been purchased for stock farms in Montana, Idaho, Wyoming, Colorado, Texas, Mexico, Australia, Sandwich Islands and Central America. The common sheep of the county are valued by the assessor at \$300,000, and the thorough-breds at \$10,000.

### CATTLE

The increase in the alfalfa area and the extension and improvement of the irrigation facilities have given a tremendous impetus to the cattle industry. During the past ten years the number and size of herds have been increased and the standard materially raised. It has become one of the cattle breeding centers of California and of the Pacific Coast. A noted editor for one of the leading stock journals of the United States, after a visit to this county, wrote: "I do not think that any person will dispute that Yolo county offers more natural advantages for the production of alfalfa than any county in the state, and it is admitted everywhere that alfalfa is the best and cheapest food with which to grow prize-winning

dairy and beef cattle, as well as sheep and swine. Yolo county, I am certain, can produce as fine cattle as any place in the world, and do it cheaper."

The Bullard estate, the Gibsons, the Glides, H. P. Eakle, Asa Morris & Sons, J. A. Harold and many others have done much to improve the herds of the county. Durhams, Holsteins, Jerseys, Herefords, Ayrshires, Polled Angus and the Brown Swiss have each found their ardent admirers. In order to raise the standards of both beef and dairy herds purchases have been made of the cream of the best stock offered for sale at the national sales in Missouri, Illinois, Iowa and Kentucky. The assessor fixes the value of all cattle at about \$80,000.

### DAIRYING

The dairy industry, which was practically unknown in the county a few years ago, is rapidly taking front rank. Since the inauguration of the industry, during the periods when other industries languished the dairy business was a source of substantial revenue to all who were engaged in it under proper conditions.

The dairy industry began in 1895. The Woodland Creamery was established at a cost of \$5100. Since that time the development of the industry has been such that it has been necessary to increase the capacity until it is now one of the most complete in the state.

Winters also has a first-class creamery plant and

## RESOURCES OF YOLO COUNTY, CALIFORNIA

the product of both plants is gilt-edge and is in demand all over the Pacific Coast, and even in Alaskan points. The output varies with the seasons, running very high in the spring and summer and reaching its lowest point in December and January. A conservative estimate of the daily average output would probably be 4500 pounds.

The Benicia Creamery and the Silver Crest and Crystal Creameries of Sacramento all have agencies in the county.

In the estimates here made no account is taken of the creamery plant on the state farm, which is one of the best in the state.

The net income from a good dairy cow is from \$8 to \$10 per month.

Owing to the high price of butter, but little attention is given to cheese-making.

### HOGS

The hog industry is very promising and is growing in importance. The standard breeds most in favor are the Berkshire, Poland China, Hampshire and Durocs. The Roselawn, Enterprise and Four Oaks stock farms have done splendid work in raising the standard and improving the breeds. A number of prize boars have been purchased of the most select breeders in Missouri, Iowa and Illinois. One breeder recently purchased an eight months' old boar, the sire of which sold for \$5000. Another has on his farm the progeny of a prize boar that also sold for \$5000.



BARLEY FIELD, EIGHTY BUSHELS TO THE ACRE



FLOCK OF THOROUGHbred RAMBOUILLET



A YOLO COUNTY DAIRY HERD



A BUNCH OF YOLO COUNTY MORTGAGE RAISERS