



Grain Warehouse at Biggs.

Almost every product of temperate and semi-tropic climates may be found in Butte County. The list of our products includes cereals of all kinds, hay, deciduous and citrus fruits, nuts, grapes, berries, melons, vegetables, sugar beets, hemp, flax, hops and tobacco, gold and other minerals. The

fruits principally grown for market are oranges, olives, figs, peaches, pears, prunes, plums, apricots, apples, cherries and nectarines. Among other fruits grown are lemons, limes, pomeloes, pomegranates, Japanese persimmons and loquats. Banana and date palms are grown in favored spots and sometimes bear fruit.

Stock raising is one of the leading industries of the county. Cattle, hogs, sheep and horses are profitably grown. This is an ideal stock country. Alfalfa, the finest of clovers, grows luxuriantly, and stock does not have to be housed in winter.

*Live Stock
and
Poultry*

Green feed may be had every day in the year. There are creameries at Chico and Biggs.

Poultry is very profitable. California imports trainloads of poultry and eggs and prices rule high. The average price of eggs during the year is 20 cents a dozen. The careful orchardist and farmer finds poultry one of the best paying features of his business.



Grain Field of Supervisor Wilson—Pentz.

Grain is the principal farm product. Five hundred square miles are devoted to grain within this county. Grain farms are often of vast extent and the work is done on a scale that admits of economy in operation.

Grain and Hay

Plowing is by gang plows drawn by long mule teams or traction engines; harvesting is done with a combined harvester, which cuts and threshes as it travels over the ground. A single machine has cut 100 acres in a single day. The average cost of transporting grain to tide-water is two dollars a ton.

Hemp promises to become an important product of the river bottom lands near Gridley and Biggs. Several hundred acres are planted every year. A factory for working hemp products has just been built on this coast. The fiber of the hemp grown in this county is of superior quality and the

Fibre Plants

yield is from 1,000 to 2,000 pounds to the acre. The outlook for hemp culture is most promising. Flax is grown successfully and harvested for the seed. The fibre is of the

very best and the success of flax culture here offers inviting opportunities to capitalist, manufacturer and farmer. Other fibre plants have been tested and proven a success.

Cotton has been tried in various parts of the county and the adaptability of soil and climate to cotton culture has been fully demonstrated.

The sugar beet promises to become an important product of this county. Tests of Butte County beets made at the State University show a high percentage of sugar and high coefficient of purity.



Harvesting Hemp near Gridley.

The great variety of products which may be successfully and profitably grown in Butte County afford an unexampled opportunity for diversified farming. It has been amply demonstrated that a few acres of

*Diversified
Farming*

Butte County soil will support a family in comfort and plenty. Successful small farms range from ten, twenty or forty acres upward, and, where well managed, may have something to offer for sale every month of the year. Our climate is particularly suited to heavy cropping, the growing season being practically twelve months of the year, and

several crops are sometimes harvested from the same land in a single season, especially where irrigation is practiced.

The small farm is California's best treasure and the most inviting opportunity she offers to the home-seeker. The successful small farmer grows a variety of products. He grows alfalfa and keeps cows, hogs and chickens. He grows fruits and vegetables. He irrigates and consequently has no fear of drouth. He lives well, enjoys life and saves money.

River steamers navigate the Sacramento River at all seasons of the year. The California and Oregon Railway bisects the valley portion of the county. The San Francisco and

*Transportation and
Markets*

Oroville line serves the country west of the Feather. The Diamond Match Railway will serve a rich mountain section between Chico

and Stirling. The railways about to be built through Oroville up the Feather River will penetrate a rich and undeveloped section, and the transcontinental line will provide all the advantages of competition in rates and service both east and west.

Mountain stages run regularly on all mountain roads and freighting, where there are no railroads, is by wagon. Eight stage lines center at Oroville, from which point mountain roads radiate in many directions. Several stage lines center at Chico. San Francisco and Sacramento are our great markets. The former is a great



Oroville and Quincy Stage.

seaport and the commercial center of the

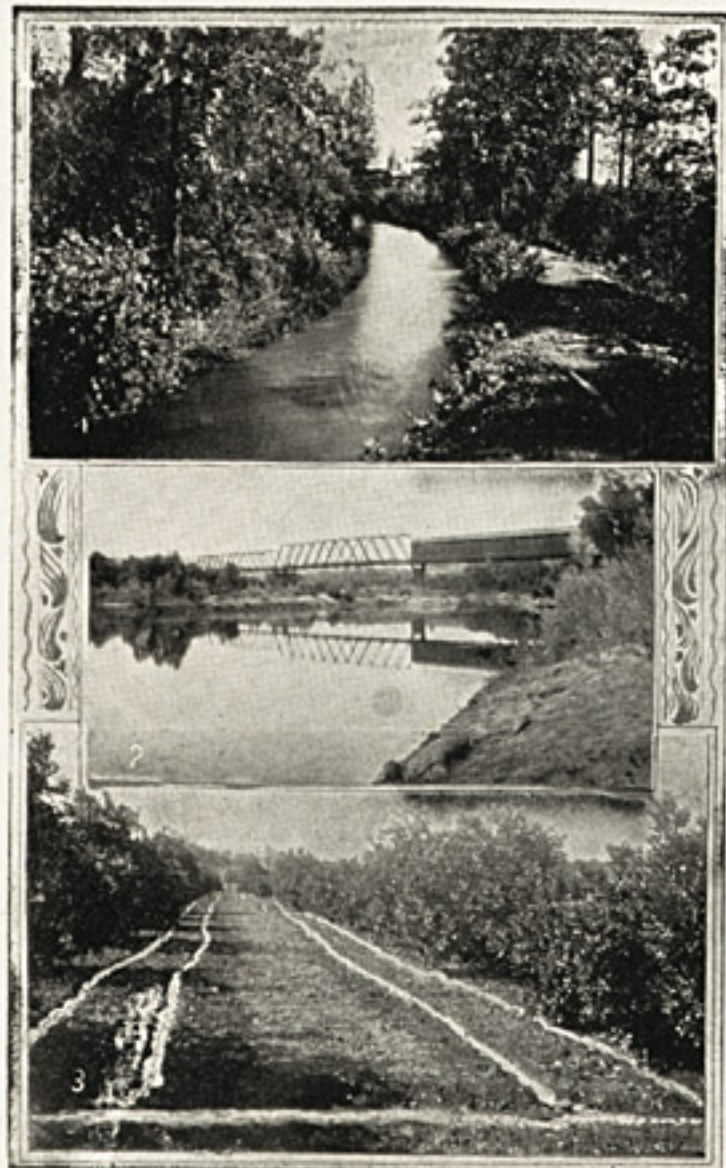
Irrigation is practiced extensively and the irrigated area is constantly being extended. Most crops can be grown in the valley section without irrigating, but a liberal use of water increases the yield and repays the effort. Irrigation is an absolute guarantee against drouth.

*Irrigation
and Water
Supply*

One of the greatest irrigation enterprises in the State is about to be launched in this county. San Francisco capitalists have organized a canal company and propose to divert the waters of Feather River at a point below Oroville. They have rights of way secured and have purchased a large tract of land which they will irrigate. The ditch will cover 200,000 acres of rich alluvial valley land. It will reach the towns of Biggs and Gridley and its building means a new era of prosperity for them, for irrigation means increased production, increased values and increased population.

Butte County is blessed with an abundance of water. The Feather River drains an area of approximately four thousand square miles and at its lowest stage flows one hundred thousand miner's inches. Rainfall is abundant, averaging about 25 inches at Chico and valley points, 30 inches at Oroville and 50 inches above an altitude of 1,500 feet.

1. Irrigation Ditch of Oroville Water Co.
2. Feather River at Oroville.
3. Irrigating an Orange Orchard.



Fine forests of merchantable timber clothe the slopes of the Sierras at altitudes ranging from 2,000 to 5,000 feet. The principal woods are sugar pine, the finest of soft pines; yellow pine, spruce, fir and cedar.

*Our
Forests*

The larger trees grow to a height of two hundred feet or even more, and attain a diameter of from four to ten feet.

Butte County is especially favored in the matter of forest wealth, and is to-day the scene of the greatest development ever witnessed in lumber regions on this Coast. The mountain forests are among our most valuable possessions. They are contributing much to our material prosperity and, properly fostered, they will contribute to the prosperity of generations yet unborn. There is no limit to the industry that may grow up in a forest, and the rapidity with which young trees grow is our assurance of the inexhaustible nature of our timber resources.

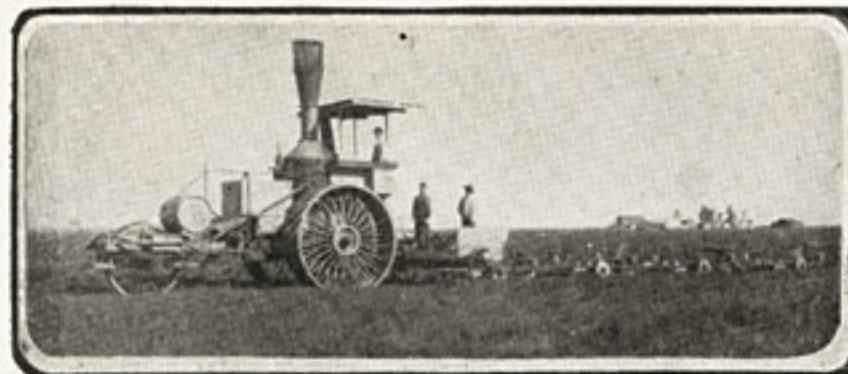


A Sugar Pine Log.

Among the forest trees is one so valuable that it will never fall victim to the woodsman's axe. This is the Abietene or orange flavored pine, a tree not known to exist in quantity outside of Butte County, and which contains medicinal properties of great value. The only known Abietene grove is on the headwaters of Butte Creek, fifty miles northeast of Oroville at an altitude of 6,000 feet, one thousand acres of Abietene forest is owned by the Abietene Medical Company, of Oroville. This company manufactures from an exudation of pitch, remedies that are invaluable in cases of lung and catarrhal troubles.

The peculiar properties of this pitch were discovered accidentally forty years ago by turpentine distillers. Eminent scientists have devoted much attention to it and its properties are fully appreciated by the medical profession. The exudation is almost pure heptane, one of the chief constituents of petroleum. The distillation of this gum has been named Butte-tine, after the county and creek where it is found, and has long been used in kidney and bladder troubles.

*The
Abietene Pine*



Steam Plow.



Combined Harvester and Thresher.

Good land may be had in Butte County in tracts to suit and at prices ranging from \$20 to \$100 per acre. Lands that cost \$500 per acre south of Tehachapi may be had here for \$50. Land prices range from \$20 to \$100 per acre.

*Lands
That Are
For Sale*

The cheaper lands are in the foothills, where vast tracts of gently rolling land are used for grazing only, and offer a most inviting opportunity to those of limited means. The soil of the foothills is red and gravelly, especially suited to the growth of oranges, olives, figs and other fruits. The climate of the foothill region is particularly favorable to the growth of the more tender fruits and it is here that oranges and olives are most extensively grown. Foothill lands must be irrigated to produce most crops, but with water they will grow almost anything man may care to plant, and a few acres devoted to a diversity of products will support a family in comfort. Foothill lands may be had at Oroville, Palermo, Honcut, Wyandotte, Bangor, Paradise and elsewhere, and it is safe to say that no part of America presents opportunities for securing at small cost lands of such productive capacity. Prices range from \$15 to \$100 per acre, according to location.

Alluvial valley lands hardly require description. The rich garden loams of the valley region range higher in price than the foothill lands, but their value is more easily understood by the newcomer. There are abundant opportunities for securing lands of this class in small tracts at Chico, Biggs, Gridley and elsewhere in the level valley. Prices range from \$40 to \$100 per acre, prices that are insignificant when compared to the productive capacity.