

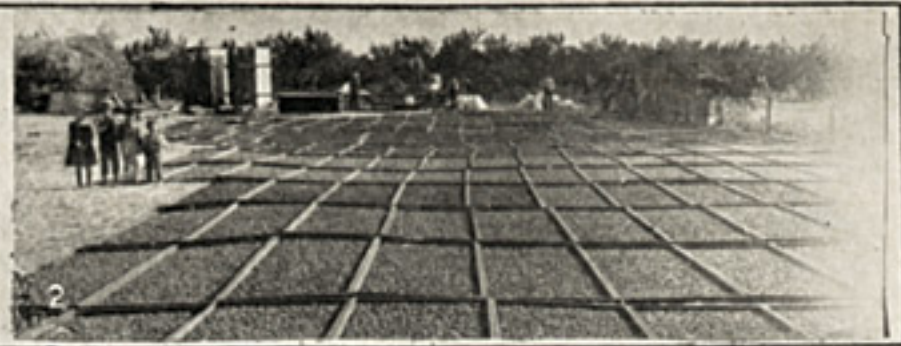
## *Luscious Deciduous Fruits.*

**T**HE luscious deciduous fruits of California are known and appreciated throughout the world. Apricots, peaches, pears, plums, prunes, cherries and other fruits attain a degree of perfection in this State that is unknown elsewhere. Butte County grows the best. Twenty-five thousand acres are devoted to deciduous orchards in this county. Train loads of fresh fruit are shipped to the East and Europe. Immense canneries pack for the world's market and thousands of tons are dried. Deciduous orchards may be found in almost every part of the county. The bulk of the fruit marketed, with the exception of apples, is grown in the valley and foothill regions. Mountain apples are especially prized for their superior quality.

*The Canneries* Two great canneries, at Chico and Gridley, pack thousands of tons of fruit every year. Hundreds of people are employed during the fruit season. Only the best of fruits are canned. The most extreme care is taken in selection, and the consumer of the best grades of our canned fruits gets the very finest that California produces.

*Dried Fruits* The greater portion of our fruits are dried. The dry atmosphere of the summer extracts the moisture so readily that the fruit is not injured. Choice California dried Fruits, when properly prepared for the table are most delicious. The low prices at which they may profitably be sold places them within the reach of the poorest families, and that they are appreciated is shown by the demand for them which is increasing steadily.

Dried fruit shipments from the county last year were as follows: Prunes, 4,500,000 pounds; peaches, 4,000,000 pounds; apricots, pears and plums, 1,000,000 pounds; apples, 350,000 pounds.



1. Hauling Fruit to Cannery.

2. A Fruit Drying Yard.

4. Chico Cannery.

6. Gridley Cannery.

7. Biggs Cannery.

Thousands of men and women are employed in orchards, canneries and drying yards. The demand for labor exceeds the supply in the fruit season. Day wages range from \$1.00 for women and \$1.50 for men, upward. Much of the work is done by the piece, and women and girls make all the way from 75 cents to \$2.50 a day, according to ability, and some even more. One dollar and twenty-five cents is probably a fair average. Wages for farm hands are usually from \$1.00 a day up; miners' wages from \$2.00 to \$3.00 per day. Small farmers and orchardists find excellent opportunities for earning money while their properties are advancing to a productive stage.

*Labor and Wages*

Fig trees grow everywhere in the valley and foothill region. They attain great size and are usually prolific bearers. The fruit is delicious and healthful. The principal varieties grown are the White Adriatic and the Black California. The fruit is marketed both fresh and dry and demands ready sale at remunerative prices. The dried fruit is packed into fancy cartons for the retail trade. The smaller figs are utilized in fig paste and other baker's products. They are also used in the manufacture of medicine, and within the past year canneries have begun to pack them. Figs are excellent food for stock, and where cattle or hogs are permitted to run among fig trees, they harvest the crop as it falls to the ground and fatten rapidly. The fig is a very prolific tree and it has a great future in California.

*The Fig*

Grapes of all kinds attain perfection here. Table grapes are grown in endless variety. They ripen from July to November and command the very top prices in Eastern markets. The first raisins made in America were from grapes grown at Pentz in this county. Wine grapes are grown extensively. The grape is one of the most delicious of fruits, and a variety such as may be grown here is a most attractive feature of a home garden.

*The Grape*

*Almonds*

The almond is an important product of Butte County, and in localities adapted to it is a very profitable crop. One million pounds of almonds were shipped from this county last year.