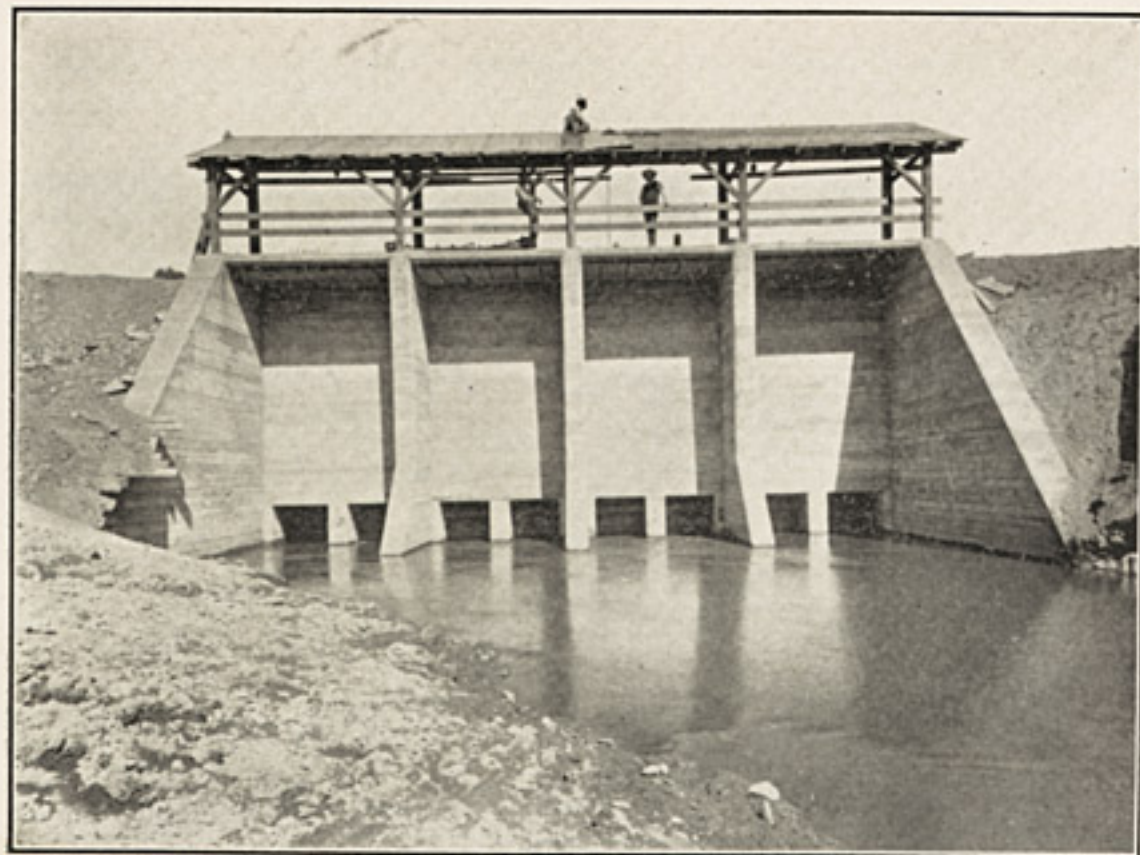


THE BIGGS COLONIES

THE TOWN OF BIGGS



Headgate of the Butte County Canal

Biggs is the mart of trade for these colonies. It is a progressive, growing, wide-awake town of 900 people. It is lighted by electricity, and has fine schools, churches, and business houses. The Colonia Hotel, at Biggs, is recognized as one of the best hotels in the entire Sacramento Valley, and is superior to any other hotel in a town the size of Biggs in the entire State. The Colonia is built of cement blocks, its rooms are splendidly furnished, its table is excellent, it is lighted by electricity, and its charges are reasonable. The hotel

BUTTE COUNTY, CALIFORNIA

is a monument to the civic pride and progressive spirit of the merchants of Biggs. They united and put up the money to build the hotel and are maintaining it in order that the town should be able to extend a hospitable welcome to its guests.

The Sacramento Valley Bank, at Biggs, occupies a handsome brick and stone building and is one of the leading financial institutions of Butte County.

Biggs owns its own water and light systems, and has paved streets and sidewalks, and pretty parks. The Southern Pacific Railroad in a booklet on California says regarding Biggs: "We saw no region of the great Sacramento Valley that was more promising for the farmer than this."

THE BIGGS COLONIES

These colonies comprise a large tract of selected land almost surrounding the town of Biggs. The land touches the



How Oranges Grow in Biggs Colonies

THE BIGGS COLONIES

corporate limits of the town. It has been divided into tracts of five, ten, fifteen, and twenty acres. Ten acres of this land will give you a good home, good health, and a good income. This is an opportunity which must be seized **now**, as all of the land in these colonies will double in value within two years.



A Pretty Little Home at Biggs

PRICES AND TERMS

The Biggs Colonies land, with water rights, is offered at prices ranging from

\$65 to \$110 per acre

according to its proximity to the town of Biggs.

Terms—One-fourth cash, balance in five equal annual payments, or in monthly installments. Interest on deferred payments, 6 per cent per annum.

Purchasers may pay more than one-fourth cash, or all cash. Deferred payments accepted at any time. Possession of the land given when first payment is made.

BUTTE COUNTY, CALIFORNIA

COLONIST RAILROAD RATES

Low rates from all points east of the Rocky Mountains to any point in California are in effect every spring and fall, and at other times. You can buy one of these low-rate tickets from your own town direct to Biggs.

ASK US. We will be pleased to answer any questions you may ask about the soil, the climate, the products, the location, the price of the land, railroad rates, etc. Write to us. We can supply the names of settlers near Biggs who will vouch for our statements.

BUTTE COUNTY IRRIGATED LAND COMPANY

1107 Post St., San Francisco, California
Chas. F. O'Brien, General Agent
Biggs, Butte County, California
C. L. French, Local Agent



One of the Giant Live Oak Trees

THE BIGGS COLONIES

COST OF SOWING ALFALFA, ETC.

Many of our homeseekers ask for explicit information in relation to the cost of sowing alfalfa, planting orchard trees, etc. Below we give two tables, with approximate cost of preparing land, etc. The actual cost may vary slightly from these figures:

ALFALFA (20 Acres).	PEACHES, PEARS, FIGS, GRAPES, ETC. (10 Acres.)
Plowing, leveling, harrowing, building ditches, sowing, etc., \$12.50 per acre..\$250.00	Preparing land, \$7.50 per acre.....\$ 75.00
Seed, 18 lbs. to the acre, @ 15c..... 54.00	Trees 150.00
—————	Planting 40.00
304.00	Cultivation, irrigation, etc..... 40.00
First payment, 20 acres, \$80 per acre.... 400.00	First payment, 10 acres @ \$80..... 200.00
—————	—————
Total, first season.....\$704.00	Total, first season.....\$505.00

Note—Alfalfa will yield two to three cuttings the first season, if sown in spring. After first season, profits from alfalfa should cover all expenses and meet payments on land.

Cost of a vineyard will be less than shown in above table. A peach orchard will cost slightly more. Sugar beets and other products, grown between the trees, should meet further payments on land.

BUTTE COUNTY, CALIFORNIA



Bridge Across the Feather River

Peaches, figs, and grapes yield a small crop the third year after planting, and come into regular bearing the fourth year. The profits vary slightly with the seasons, but an average of \$100 per acre or more on peaches, \$75 to \$100 on grapes, and \$100 to \$200 on figs, is conservative. Alfalfa gives full crops beginning the second year and when cut for hay pays as high as \$50 per acre in a season. In connection with dairying and hog raising alfalfa pays \$75 to \$100 per acre.