

Average Winter Temperature - 47.0 ||| Average Summer Temperature - 75.0
 Average Spring Temperature - 60.0 ||| Average Autumn Temperature - 61.0

SACRAMENTO VALLEY



SHIPS THOUSANDS OF
 CARLOADS OF GREEN FRUIT
 EAST EACH SUMMER:
 THE
 FRUIT BASKET
 OF AMERICA
 PEACHES PRUNES
 APRICOTS ORANGES
 NECTARINES
 GRAPES ETC.



Homeseekers' Excursions to California

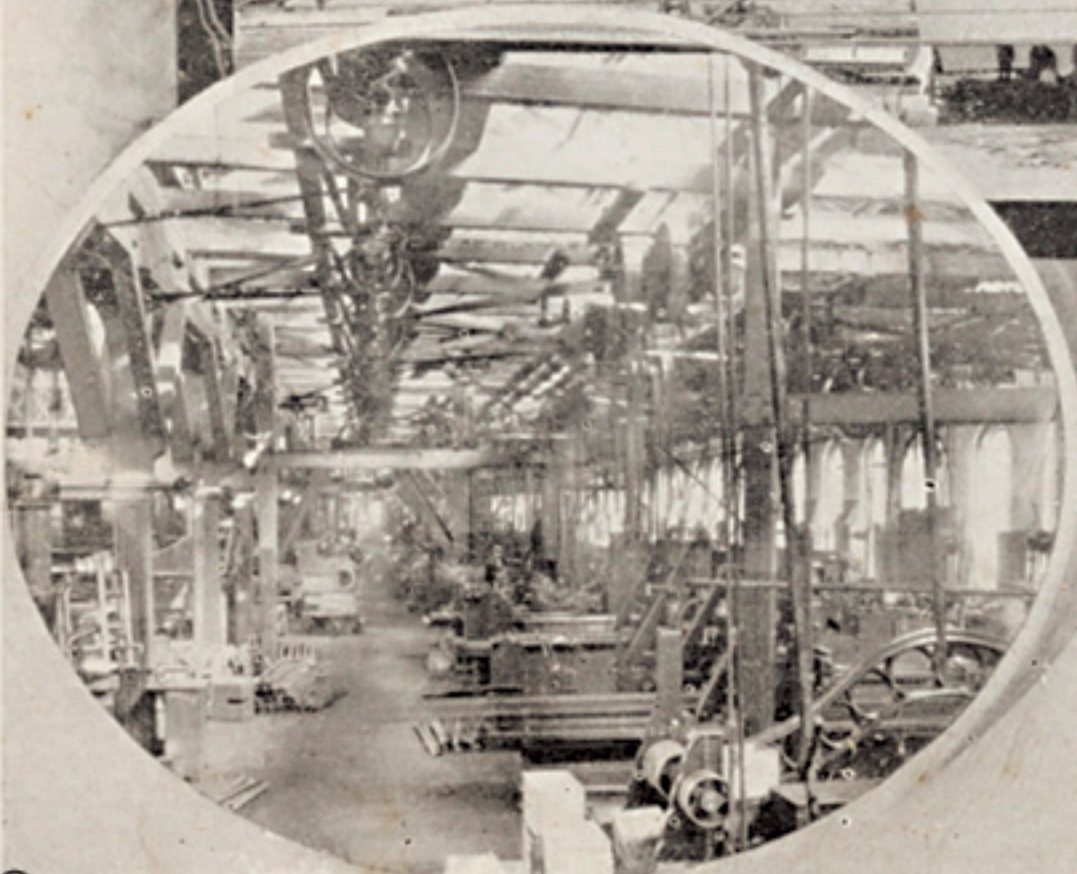
SACRAMENTO CALIFORNIA



STATE CAPITAL
AND
INTERIOR
METROPOLIS



SOUTHERN PACIFIC
CAR SHOPS



MANUFACTURING
FRUIT PACKING
HOPS
GRAIN
GARDEN TRUCK
MINING

TICKETS WILL BE SOLD TO

CALIFORNIA

AND RETURN

FROM CHICAGO	\$64.50
FROM ST. LOUIS	59.50
FROM KANSAS CITY, ST. LOUIS, COUNCIL BLUFFS, SIOUX CITY	52.00
FROM NEW ORLEANS	59.50

DATES OF SALE

AUGUST 6 AND 20, SEPTEMBER 3 AND 17, 1901

Excursions leave prominent Eastern points in upholstered, gas-lighted, vestibuled excursion cars, over the Southern Pacific Lines

SEVERAL TIMES WEEKLY

Sacramento is the center of a great deciduous fruit section of the State. The larger part of the green fruit shipped to Eastern markets including peaches, apricots, pears, plums, prunes, nectarines, cherries, etc., is grown in the district about Sacramento. The fast fruit trains to the East are made up there. Hop growing, alfalfa, dairying, truck and berry farming, olive and wine growing are profitable occupations; unlimited water for irrigation and plentiful rainfall. There has never been a crop failure.

Sacramento is a thriving city of 30,000 people, of large wholesale, retail and manufacturing interests. Splendid openings for energy and capital. No bad weather. 238 clear days last year. Excellent climate, good schools, churches, well-built and orderly city.

For further information, address nearest Agent

SOUTHERN PACIFIC CO.

OR SECRETARY, CHAMBER OF COMMERCE, SACRAMENTO, CAL.