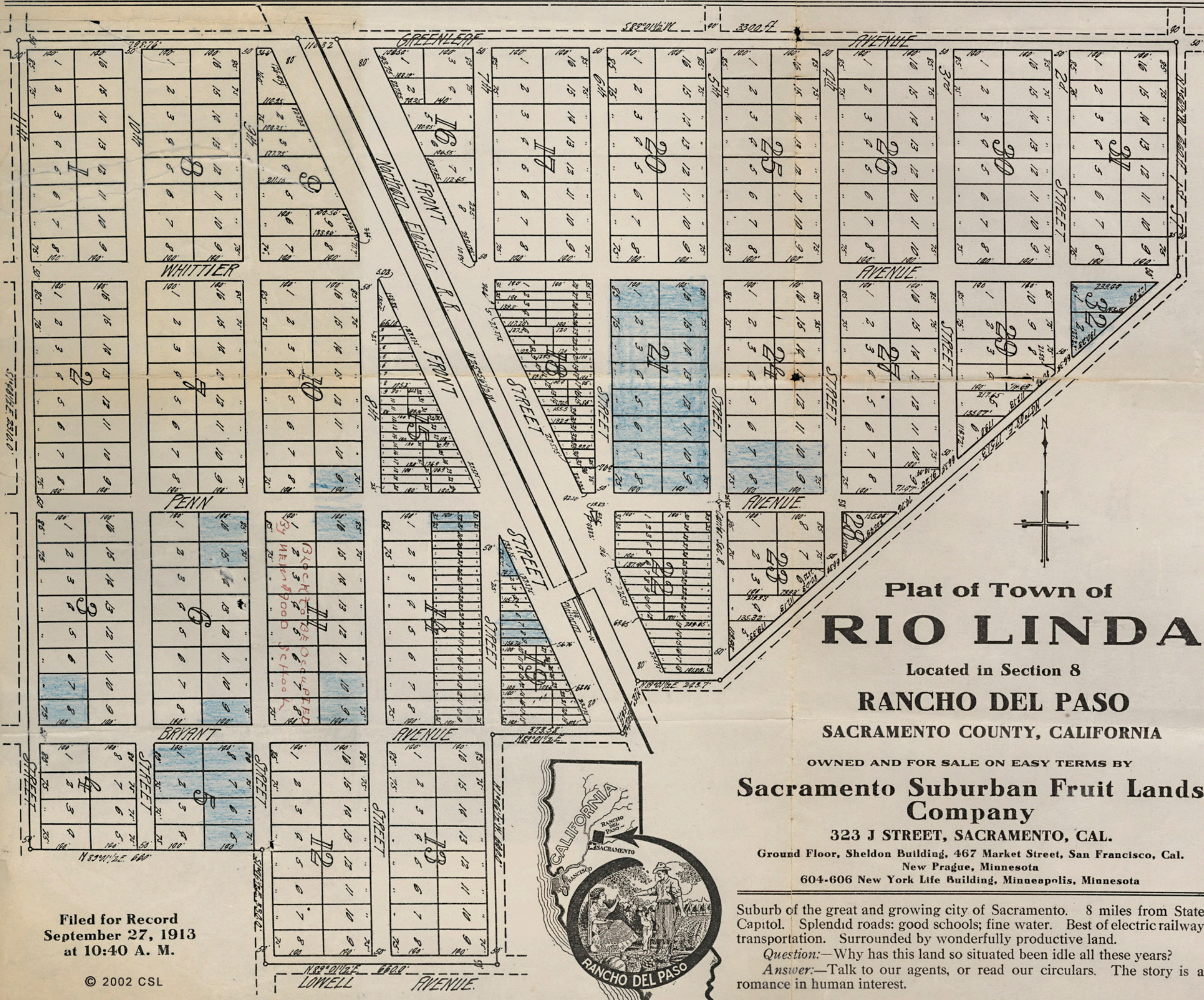


Northern Electric Railway Company Standard Train
Between Sacramento and Rio Linda



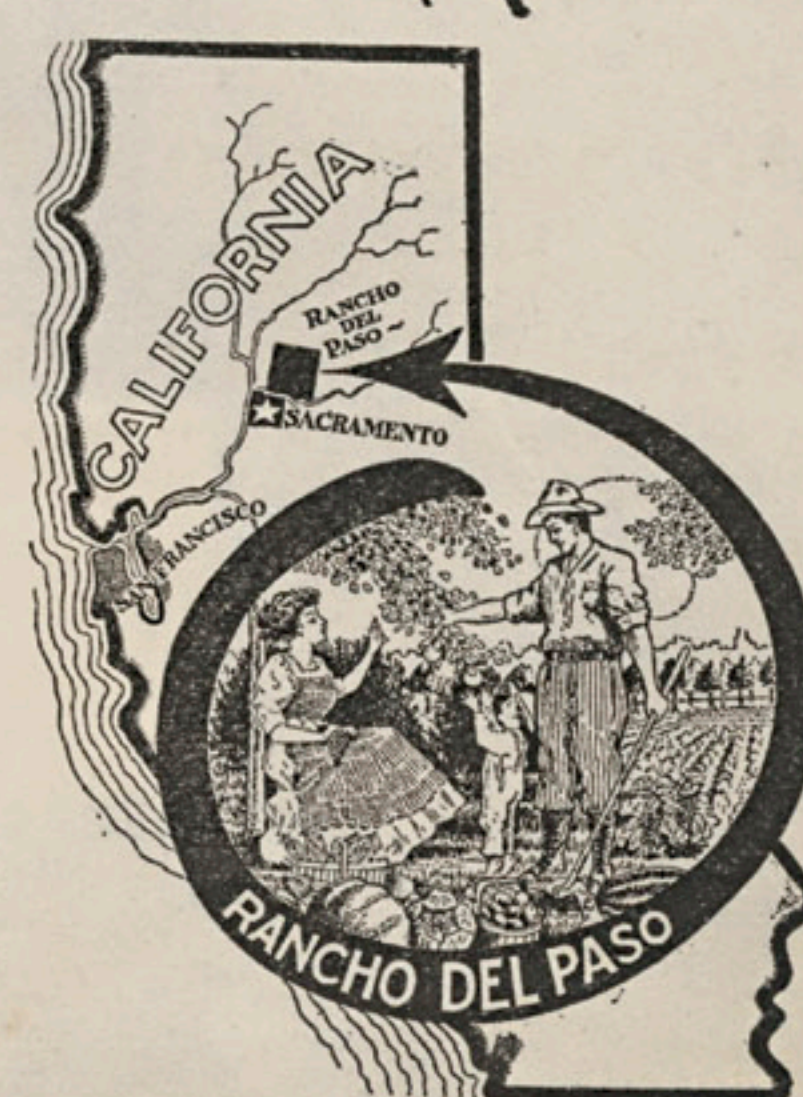
Plat of Town of
RIO LINDA

Located in Section 8
RANCHO DEL PASO
SACRAMENTO COUNTY, CALIFORNIA

OWNED AND FOR SALE ON EASY TERMS BY
**Sacramento Suburban Fruit Lands
Company**

323 J STREET, SACRAMENTO, CAL.

Ground Floor, Sheldon Building, 467 Market Street, San Francisco, Cal.
New Prague, Minnesota
604-606 New York Life Building, Minneapolis, Minnesota



Filed for Record
September 27, 1913
at 10:40 A. M.

Suburb of the great and growing city of Sacramento. 8 miles from State Capitol. Splendid roads; good schools; fine water. Best of electric railway transportation. Surrounded by wonderfully productive land.
Question:—Why has this land so situated been idle all these years?
Answer:—Talk to our agents, or read our circulars. The story is a romance in human interest.