

DIAGRAM A.

COAT FOR PASSENGER CONDUCTORS AND TRAIN AUDITORS.

Single-Breasted Cutaway Frock, with Flaps on Side; Four Buttons on Front, Only Top Button to Close, Two at Waist Seam on Back.

- Collar..... 1½ inches wide at end, 1¾ inches wide at back, no seam.
- Edges..... Double stitch, ⅜ inch wide.
- Cuffs..... Imitation stitch to match edge, 3½ inches deep, with two buttons and blind button holes.
- Breast Pockets Two inside, 6 inches wide, 8 inches deep.
- Ticket Pockets One inside and one outside; 4 inches wide, 5 inches deep; all pockets to be made of triple warp drill.
- Hip Pockets... Under flaps on side, 7 inches wide, 8 inches deep, flaps 3 inches wide, stitched to match edges.
- Body Lining.. Best Mohair Serge.
- Sleeve Lining. Extra heavy hair line stripe.
- Buttons..... Western Pacific Standard; gold, furnished by Railway Co., attached by inserting shank through cloth and fastening with cord through eyelet, sewed on each side.
- Collar Ornaments.. Gold; furnished by Railway Co.

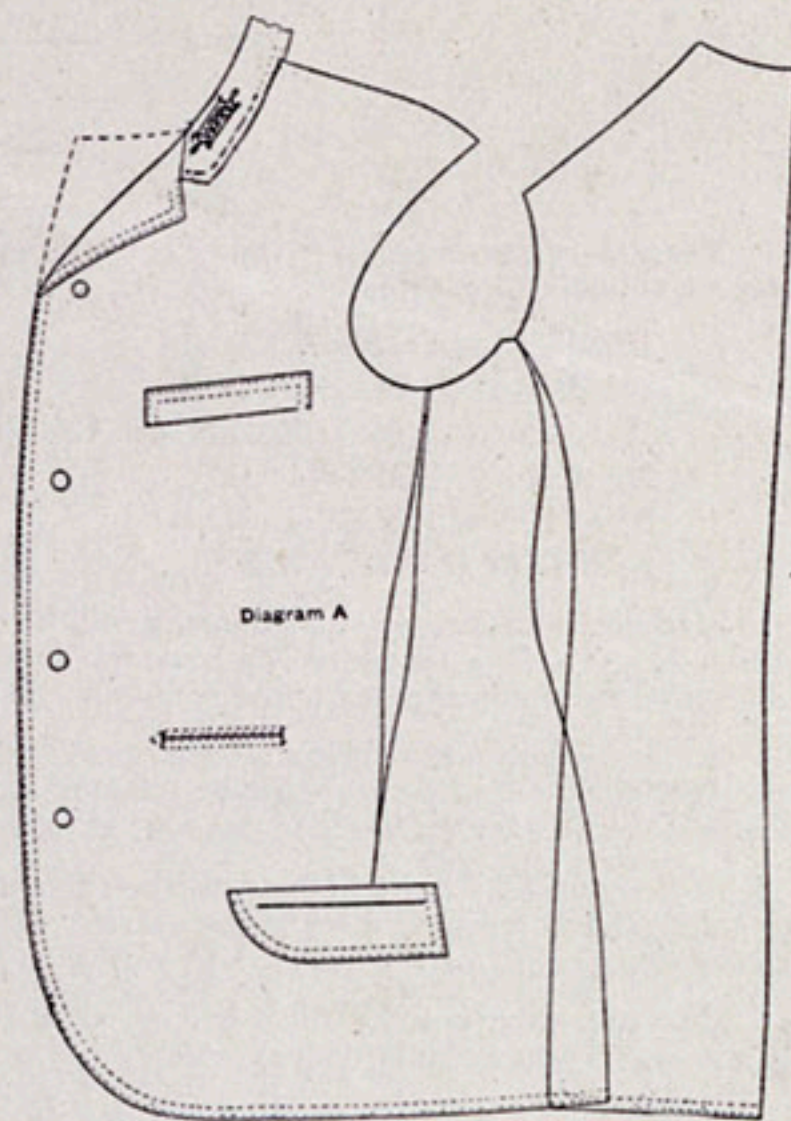


DIAGRAM B.

COAT FOR PASSENGER BRAKEMEN AND PORTERS.

Single-Breasted Sack Coat; Four Buttons, All to Close, But May Be Worn Closed on One Button.

- Collar..... 1½ inches wide at end, 1¾ inches wide at back.
- Edges..... Double stitch, ⅜ inch wide.
- Cuffs..... Imitation stitch to match edge, 3½ inches deep, with two buttons and blind button holes.
- Breast Pockets One outside, left, 6 inches wide, 8 inches deep.
One inside, right, 6 inches wide, 8 inches deep.
One outside, cash, left, 4 inches wide, 5 inches deep.
- Hip Pockets... Two outside, under flaps, 7 inches wide, 7 inches deep, with flaps 2¾ inches wide.
- Body Lining.. Best Mohair Serge.
- Sleeve Lining.. Extra heavy hair line stripe.
- Buttons..... Western Pacific Standard; silver, furnished by Railway Co., fastened on same as specified for Conductors' coats.
- Collar Ornaments.. Silver; furnished by Railway Co.

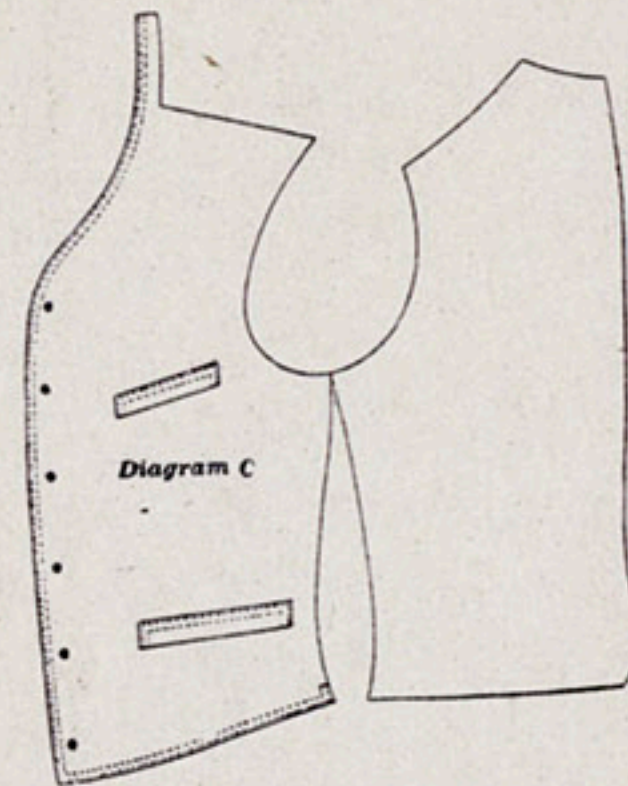
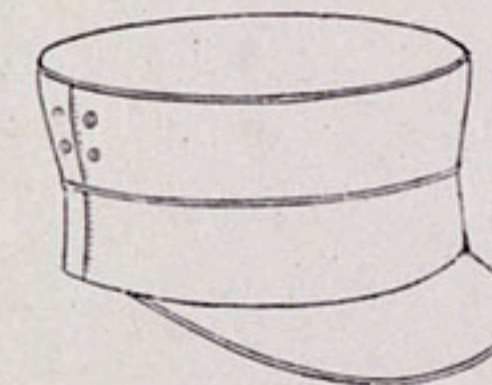


DIAGRAM C.

VEST FOR ALL UNIFORMED MEN.

- Collar..... None.
- Edges..... Stitched to correspond with coat.
- Pockets..... Two outside, upper, 4 inches wide, 5 inches deep.
Two outside, lower, 5 inches wide, 4 inches deep.
1 inside, right, 5 inches wide, 6 inches deep.
Stitched to match edges.
- Lining..... Extra heavy hair line stripe.
- Back..... Best Mohair Serge.
- Buttons..... Six small regulation standard; gold for Conductors, silver for Brake-men and others.
Attached by inserting through cloth and fastening with cord through eyelet, sewed on each side.



CAP PATTERN No. 1



CAP PATTERN No. 2

TROUSERS.

TROUSERS AT KNEE AND BOTTOM MEDIUM IN SIZE.

Two top or side pockets; two hip and one watch pocket