

TRAVEL BY STAGE!

(1923)



BEVERLY GIBSON

Due to the fact that one mere man cannot be in more than one place at the same time, I cannot personally greet you as it would be a pleasure to do each day. However, I can greet you by proxy daily in Rio Vista, Isleton, Walnut Grove, Locke, Ryde, Courtland, Hood, Clarksburg, Freeport, Stockton and intermediate stops. We run splendidly built stages which make trips every two hours between Sacramento and all down river points as far as Rio Vista; making connections also for Glennvale and Franklin twice daily. From Walnut Grove we run stages which make six round-trips a day touching at Thornton, Worthington, Lodi and Stockton.

We employ careful drivers, and our stages are run on a schedule which will compare favorably with the best passenger service in this State.

We thoroughly appreciate the splendid patronage which the Delta residents have given us; we have tried by good service to deserve this patronage, and we will try to continue to deserve it.

FROM SACRAMENTO

Beginning at 8 A. M., stages leave every two hours up to 6 P. M. for Rio Vista and intermediate points.

FROM RIO VISTA

Beginning at 7 A. M., stages leave every two hours up to 5 P. M. for Sacramento and intermediate points.

STOCKTON SERVICE

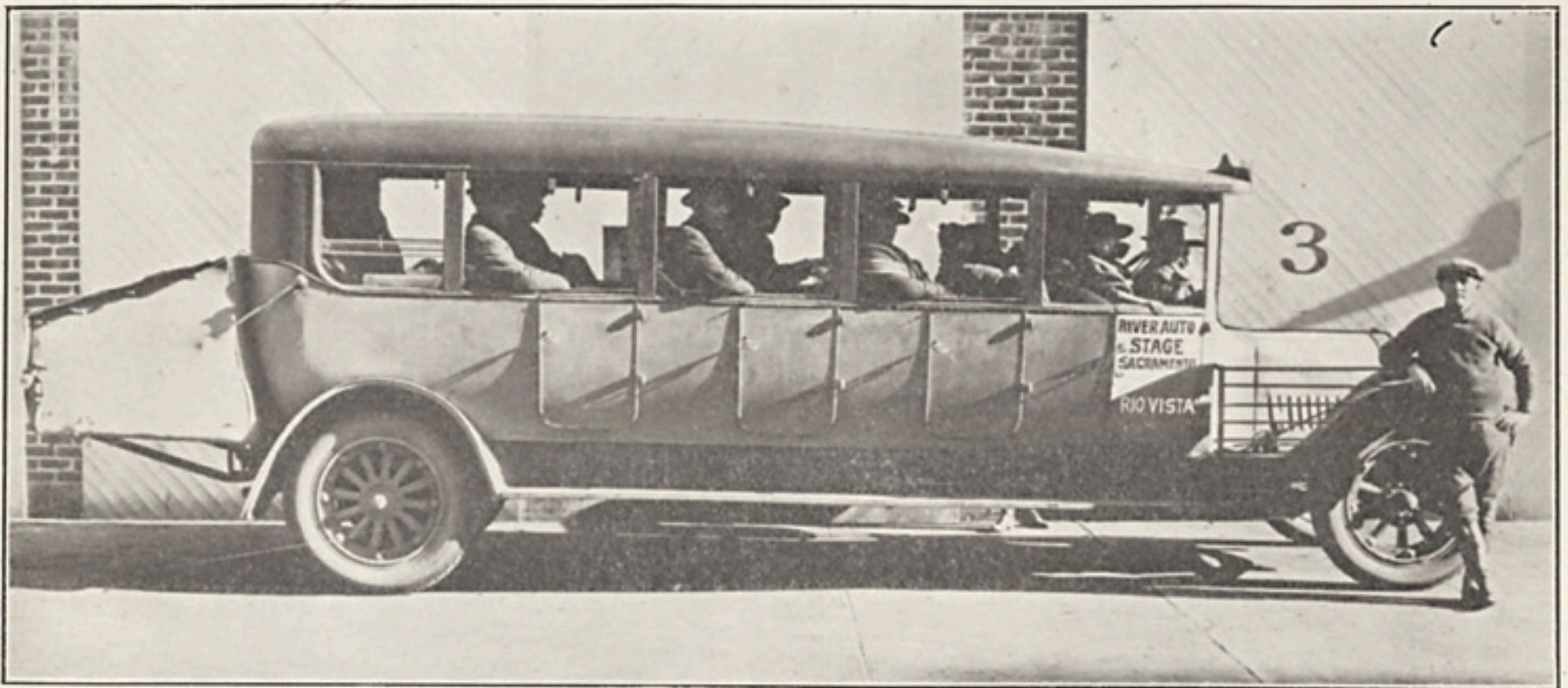
Connecting at Walnut Grove, Stockton stages run as follows: 9 A. M., 10:30 A. M., 12:30 P. M., 2:15 P. M., 4 P. M. and 6 P. M.

RIVER AUTO STAGE

BEVERLY GIBSON, Prop.
UNION STAGE DEPOT, FIFTH AND I STREETS, SACRAMENTO.

*still covers
cal cases*

WHITE BUSES



ONE OF THE FLEET OF WHITE BUSES OPERATED BY RIVER AUTO STAGE.

We take pleasure in referring to Mr. Beverly Gibson, proprietor of the River Auto Stage, as one of the successful Motor Stage operators of the Sacramento Valley.

He has merited his success through his foresight in giving to the Public regardless of initial expense safe, dependable and economical busses.

Ninety per cent of stages operating out of Sacramento are White Busses.

THERE IS A WHITE TRUCK BUILT FOR EVERY ECONOMIC TRANSPORTATION NEED.

HENRY SPRING CO.

12th Street at "G"

Sacramento, Calif.

Main 631

© 2002 SACRM