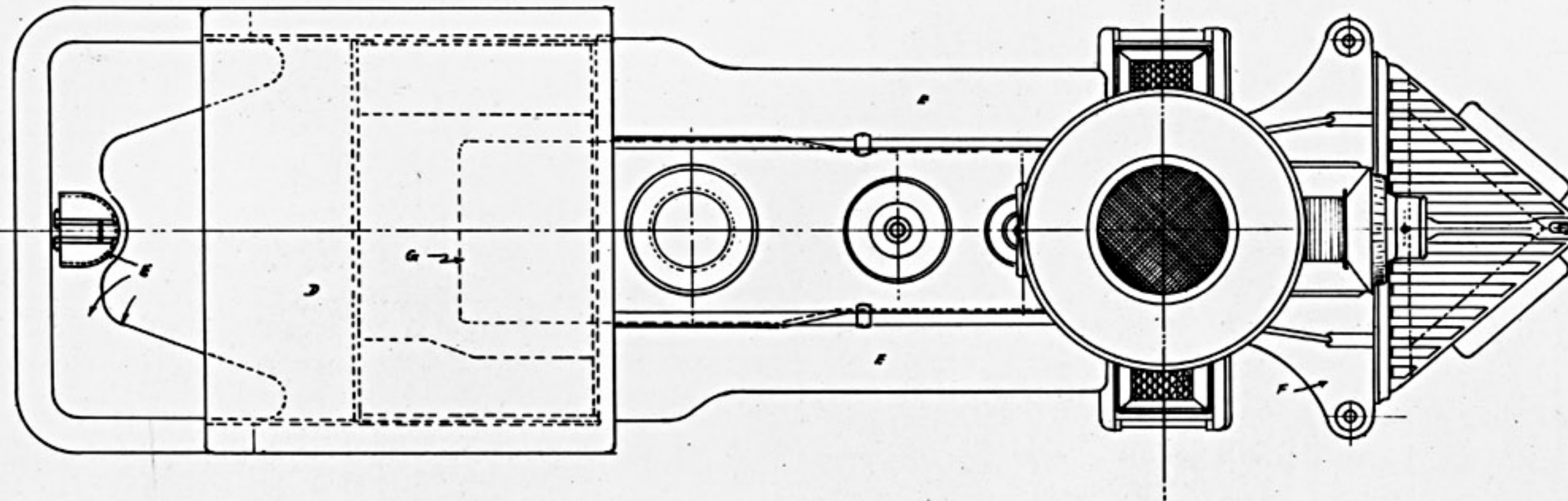


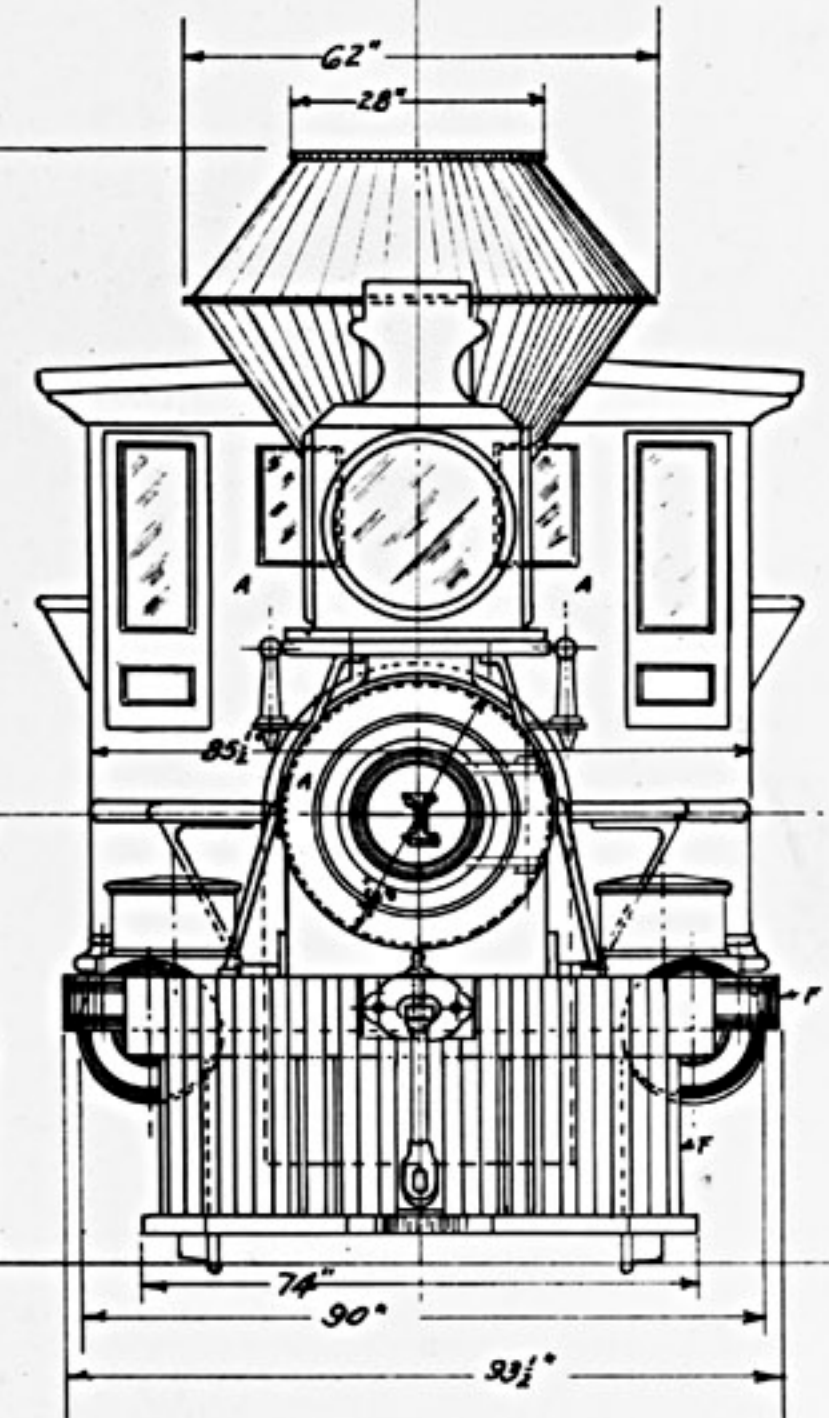
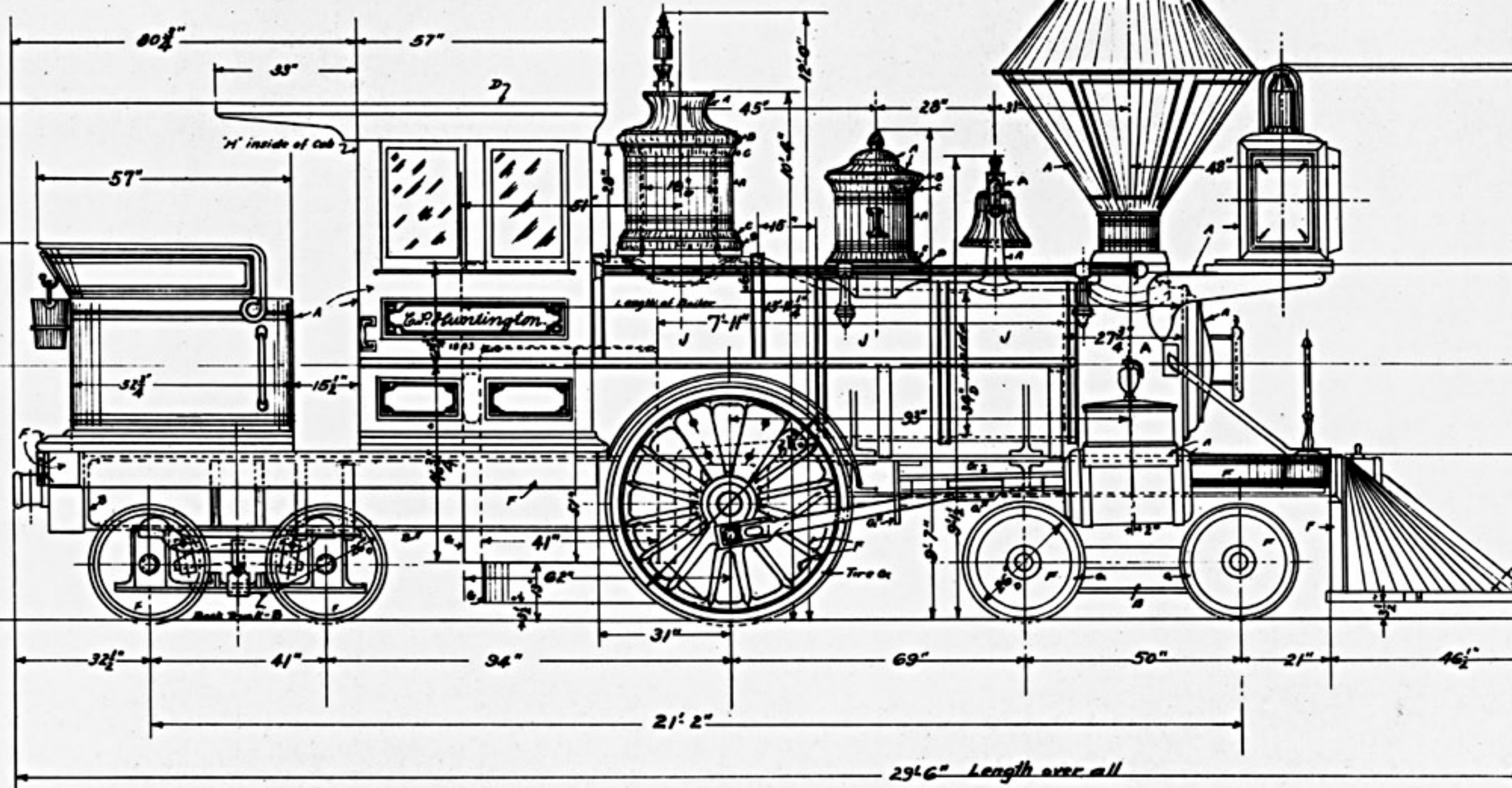
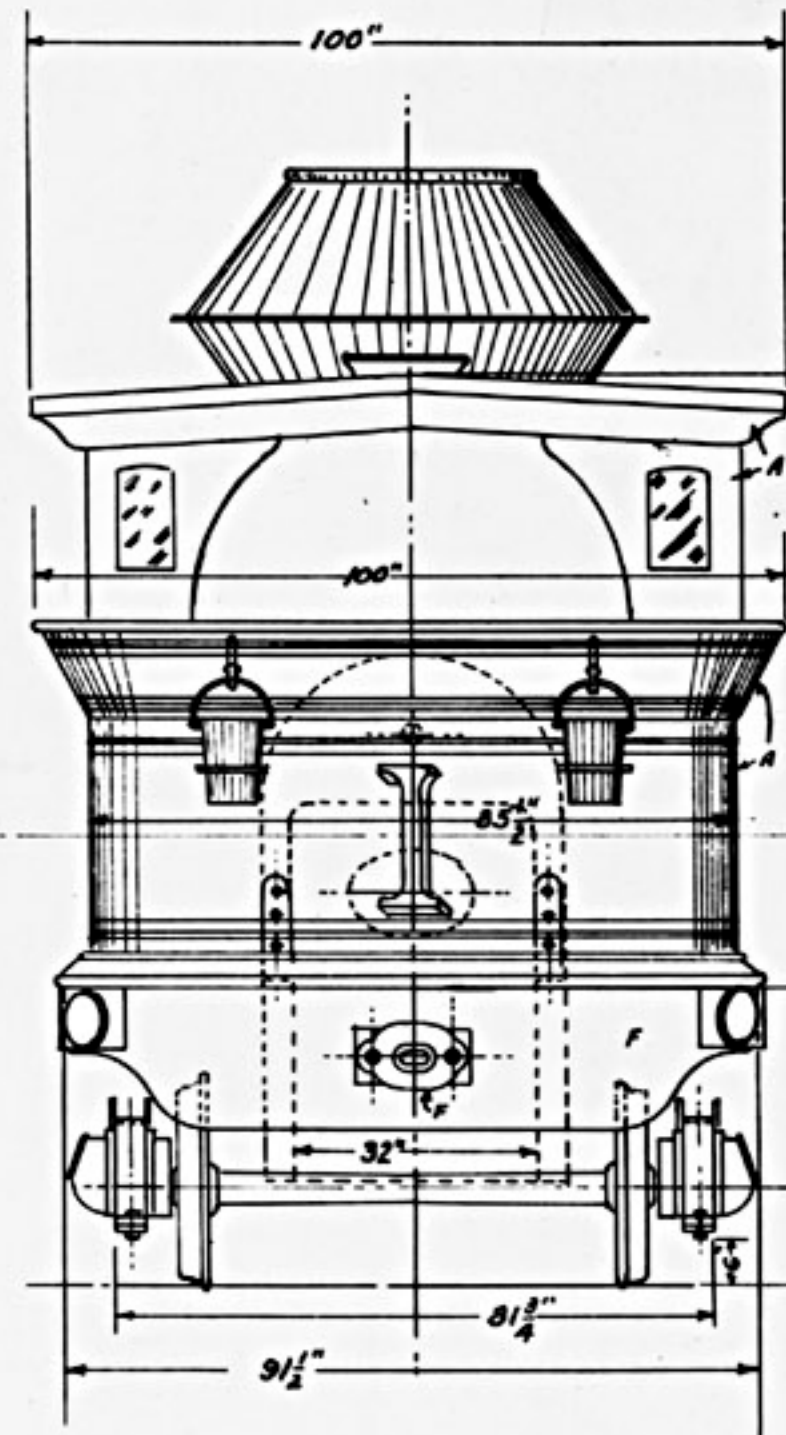
Color Scheme

- A - Wine Color
- B - Black
- C - Cherry
- D - Mineral Red
- E - Chrome Yellow
- F - Permanent Red
- G - Aluminum
- H - Chrome Green

Parts not shown painted Aluminum color as follows:
 Safety Valves, Rocker and rock shaft, links, link
 lifter, Valve rods, back part of boiler in cab, Throttle lever
 Parts Nickel Plated: Whistle, Bell, Nut on top of bell,
 Hand rails, Hand rail columns and acorn nuts, cab handles,
 Signal stands on front bumper, Steam gauge in cab, water
 glass fittings, Gauge lamp and shade, Steam chest lubricators.
 Monogram and name in gold leaf. Numeral in gold leaf shaded
 in medium green. Heavy Striping in gold leaf, light striping
 in medium green. Decoration on front of headlight in gold leaf.
 Decoration on trailing truck equalizer in white.
 Jacket Bands are Polished Brass.



Revisions
 A - Added Dimensions, indicated color scheme and reference made to nickel plating.
 B - Showed color of jacketing as dark blue-grey and color of smoke box as wine color.



Locomotive G.P. Huntington, Southern Pacific of California, No 1. Original Central Pacific R.R. No 3. Built by Danforth Cooke and Company at Patterson, New Jersey 1863. Shipped around the horn on the sailing vessel Success. Brought to Sacramento on a river schooner, unloaded on the levee and assembled. Went into service on the Central Pacific R.R., early in 1864.

Cylinders	11" Dia x 15" Stroke
Dia. of Drivers	54"
Weight on Drivers	15980 lbs.
Weight on front truck	11700 lbs.
Weight on rear truck	15820 lbs.
Total Weight	43500 lbs.
No. of tubes	88
Dia. of tubes	2"
Length of tubes	7'-11"
Heating surface of tubes	361 Square feet
Heating surface in fire box	58 " "
Total heating surface	419 " "
Grate area	9.39 " "
Steam pressure	125 lbs.
Tractive effort	3571 lbs.

Water Capacity of tank, 300 Gallons
 Fuel Capacity, 7/8 Cord

SOUTHERN PACIFIC COMPANY
 PACIFIC LINES

Diagram and Data,
 Locomotive G.P. Huntington
 Scale: 1/2" = 1'-0" Sacramento, Nov. 11, 1936

BOOK 621	20918
I	Dec. 17, 1936
J	April 20, 1937
K	
L	
M	
N	
O	
P	