

Reservations

Reservations must be made at the Recreation Department Office, Room 300 City Hall. Reservations cannot be made at Camp.

Applications for reservations will be accepted beginning Monday, June 18th.

Until August 25th, reservations will be accepted for one or two week periods only. Beginning August 25th until the close of the camp season reservations may be made for an extra week (making three weeks in all).

Applications for reservations will be accepted from the following persons:

- Those who have continuously resided in Sacramento for at least six months.
- People residing outside the city, but who are paying city taxes.
- Persons residing in the suburbs immediately adjoining the city, provided they reserve for a period between June 23 and July 14 or after August 25th.
- Out of town relatives of any family eligible to go to Camp, provided they all occupy the same room.

AN ADDITIONAL FEE OF \$2.50 for each adult and \$1.00 FOR EACH CHILD WILL BE MADE TO OUT OF TOWN RELATIVES AND THOSE LIVING IN THE SUBURBS.

Camp Rates Including Meals and Living Quarters			Transportation Rates (Fare payable to Transportation Co.)	
	ONE WEEK	TWO WEEKS	ROUND TRIP	ONE WAY
Adults	\$10.00	\$20.00	\$7.50	\$7.00
Children 5 Years and Under 12	5.50	11.00	3.75	3.50
Children Under 5 years	2.50	5.00	No fare provided child does not occupy a seat on the stage to the exclusion of other passengers.	
Reservations must be paid for in full before going to Camp. No reservations will be made at Camp.			Stage tickets are obtainable at the Union Stage Depot, 5th and I Streets. Stages leave Union Stage Depot at 10:30 a. m. Daily.	

RECREATION DEPARTMENT

Room 300, City Hall

H. C. BOTTORFF

City Manager

Telephone Main 8060

GEORGE SIM

Supt. of Recreation

The Capital Press 413 J Street, Sacramento

Camp Sacramento 1928



Season Opens June 23rd

Reservations May be Made on
or After Monday, June 18th at the

RECREATION DEPARTMENT

Room 300, City Hall

Phone Main 8060



THE AIM of this folder is to acquaint Sacramento people with the opportunity offered by the city for an inexpensive vacation in the mountains. The camp is operated on a self-paying but non-profit making plan; therefore, the rates are kept at a minimum.

Location

The camp is located ninety-five miles from Sacramento in the mountain-lake country of the Sierra-Nevadas, only five miles from the summit, and fourteen miles from Lake Tahoe.

The Site

The site, which is 6500 feet above sea level, consists of approximately forty acres. There are two meadows, the upper and lower, which are divided by the South Fork of the American River.

The lower meadow, which is one of the largest open stretches of land, in that section of the mountains, is used by the campers for games; the upper meadow, which over-looks the river and faces a wide landscape of open country, is where the camp buildings are located.

The camp is a safe place for children. The site has plenty of level ground, the river is shallow, the cabins are considerable distance from the highway, and the Playground near the main hall keeps the children together many hours of the day.

Buildings

The camp has thirty-five cabins, a dormitory with twelve rooms, a combination dining room and entertainment hall, lavatory building, laundry, accommodation store and library, storehouse, and hydro-electric plant.

The cabins accommodate groups of various sizes, and are located so as to give the amount of privacy desired, but are close enough for neighborliness.

Accommodations

Families of three or more will be given one-room cabins or a room in a two-room cabin (single or double beds).

Groups of two will be accommodated as follows: Man and wife in small room with double bed. Other groups of two will be given a small room, when possible, or will be assigned to a larger room occupied by others.

Individuals will be assigned single beds in rooms occupied by others.

The Trip

The camp is easily accessible over the newly improved mountain highway by private automobile or by the stages which ply between Sacramento, Placerville and Lake Tahoe resorts.

Upon leaving Placerville the road leads through mountain country which is unsurpassed for beauty. The wide panorama of the lower hill country, the long lanes between the giant pines, views of the wide canyons and the tree covered mountain sides beyond, the distant view of the snow capped peaks, the long ride along the river, the massive rock formations, the water falls, and other mountain scenery makes the trip one of wonderment and delight.

The Vacation

For those who seek a restful vacation, Camp Sacramento offers the opportunity. Campers may remain at their cabins along the river or among the trees on the hillside to rest, read, or enjoy some other quiet diversion. The well defined trail along the river, and the various well defined trails leading from the camp make it possible to enjoy short walks or distant hikes.

For those who seek activity the country abounds in mountain top objectives over good trails; those who like to rough it along the streams and lakes will enjoy the rugged country, and those who like to take excursions will find the trip to the Echo Lakes and Tahoe interesting and enjoyable.

Those who wish to enjoy activities within the camp may swim, shoot with bow and arrow at the archery range, play at the horse-shoe courts, volley ball court, or enjoy the daily games of baseball on the lower meadow.

During the early evening hours, games and entertainment are organized for children, and later the adults enjoy musicals, dancing parties, and home talent entertainments in the big hall, or participate in the frequent programs around the camp fire.

Camp Spirit

Over a period of years a spirit of friendliness has been developed by the campers and employes which is spoken of as: "The spirit of the camp".

Those who go to camp for the first time and those who go year after year find themselves among cheerful people.

There is no attempt at "dress up" at Camp. The children romp in overalls, the men wear coarse clothes or khaki, and the girls and women wear khaki or simple home dresses.

Meals

Meals are served by the cafeteria plan at regular hours. Meal tickets are issued to all campers which entitle them to their meals while at camp. Those who desire to go on all day hikes may secure lunches, provided they register with the camp manager the evening before a trip is made.

Water and Electricity

Drinking water is piped into the camp from a point beyond contamination. There is plenty of water for bathing, for laundry purposes, and the camp has its own fire protection system.

The camp has its own hydro-electric plant which furnishes illumination for the cabins and grounds, and enough electrical energy is developed to heat water for lavatory purposes.

Service

In order that the rates may be kept at a minimum, a plan of mutual help in camp upkeep and operation has been established. Under the plan campers are required to care for their own cabins and grounds and give a small amount of service as outlined by the Camp Manager when necessary. No unpleasant or unreasonable service is requested, and all those who catch the "Spirit of the camp" are willing to assist.

General Information

- (a) Reservations will not be made for people in poor health.
- (b) The camp is not open for transient service. Persons who take guests to camp or who call for them at the end of the vacation period are not considered transients and may remain at camp overnight in the same room. Other persons going with campers will be considered transients. Reservation for overnight lodging must be made at the Recreation Department office.

- (c) Reservations must be paid for in full before going to camp.
- (d) NO RESERVATION WILL BE MADE AT CAMP.
- (e) If for any reason campers leave within a week, no refund will be made.
- (f) Refunds will not be allowed for any unused portion of meal tickets, nor will any other person than the rightful owner be allowed to secure meals with tickets.
- (g) Persons arriving in camp after meal hours shown on tickets will not be served.
- (h) Campers are required to furnish their soap and towels.
- (i) BEDS WITH GOOD MATTRESSES ARE FURNISHED BUT CAMPERS MUST TAKE THEIR LINENS, BLANKETS and PILLOWS.
- (j) Flat irons will be loaned to the campers who wish to do their laundry.
- (k) There is a telephone at the camp.
- (l) Cats, dogs, or other domestic animals will not be allowed in Camp.
- (m) The Camp Manager has authority to request anyone to leave camp for improper behavior or breach of camp rules. Those who are requested to leave will secure no refund.
- (n) Low excursion rates to camp have been obtained for campers (see schedule below) from the Auto Stage Co. In order to obtain the low rates each camper must secure a credential ticket from the Recreation Department when reservation is made.

Stages leave from the Auto Stage Depot at 5th and I Streets at 10:30 a. m. and arrive at Camp about 3:40 p. m. Approximately one hour stop for lunch will be made at Placerville.

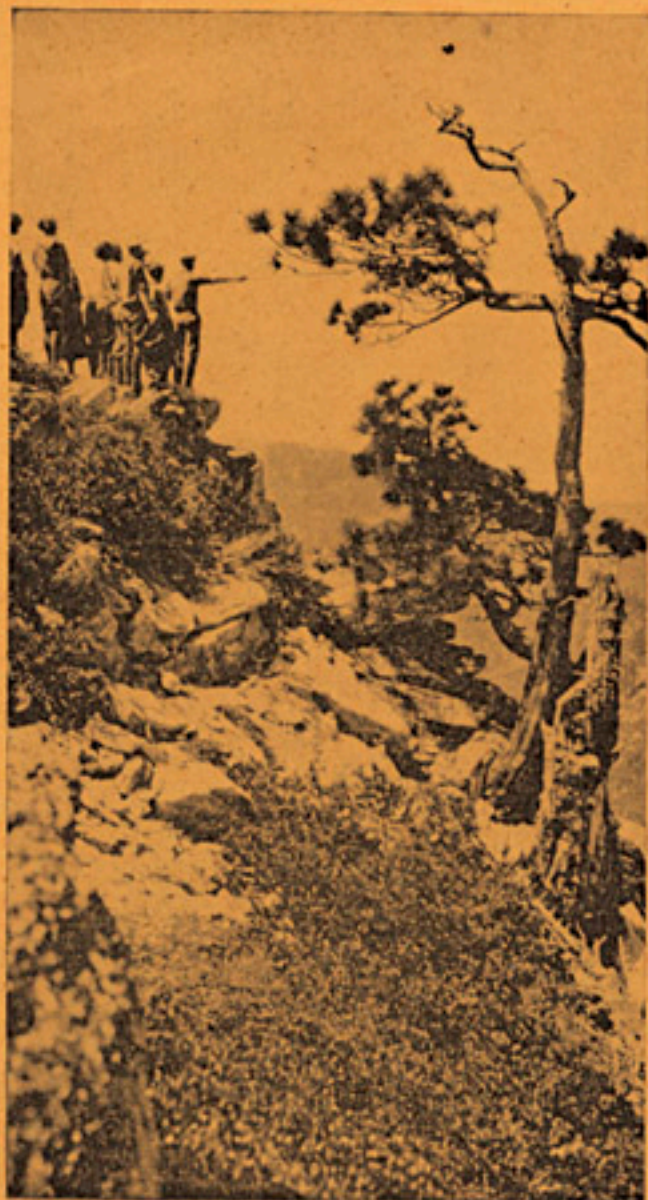
Stages leave Camp Sacramento about 9:30 a. m. and arrive in Sacramento about 2:20 p. m.

Tickets may be purchased on leaving date.

No rebate will be made by the transportation Co. for unused portion of tickets or parts thereof.

Each camper will be allowed thirty-five pounds of baggage. Excess baggage will be charged for at the regular transportation rates.

All baggage for Camp must be taken to the stage depot one day before the date of leaving. **BAGGAGE WILL NOT BE RECEIVED UNLESS PROPERLY MARKED AND SECURELY TIED.**



Lovers Leap looks high, and it is high, but is a comparatively easy hike from camp.

RESTFUL FOR MOTHERS

SAFE FOR CHILDREN

GOOD FOOD

SPARKLING WATER

COZY CABINS

LAUNDRY FACILITIES

WARM WATER FOR BATHING

LIBRARY BOOKS

STORE

CHILDREN'S PLAYGROUND



This is the place to tell old jokes, ghost stories, sing, do stunts and fuse friendships.



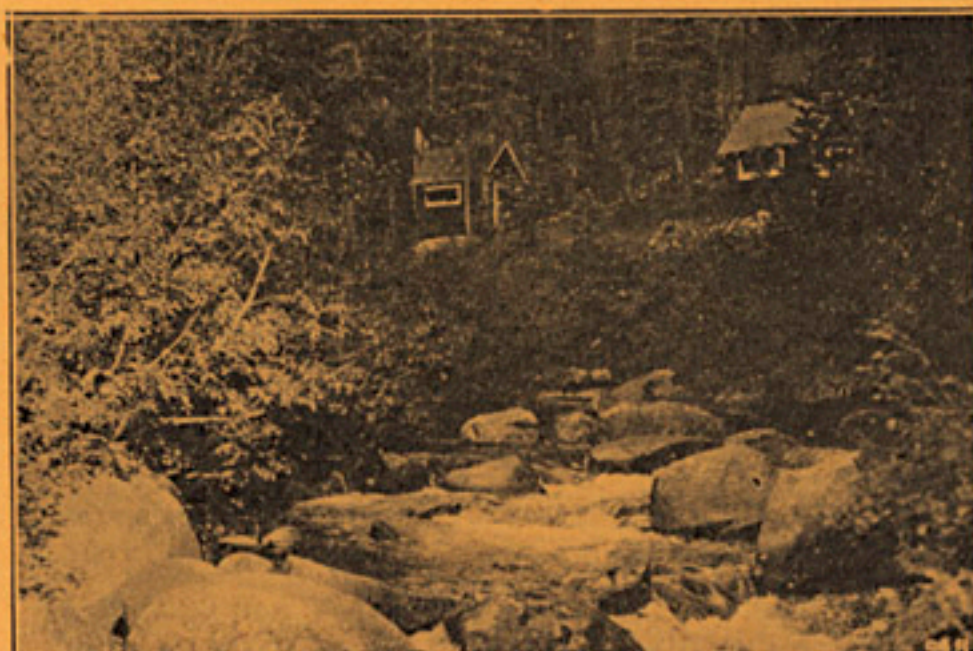
The courts of the iron shoes are kept busy from morning until night by the campers.



From the big porch of the Dining Hall a fine view of the river, the road and Pyramid Peak can be obtained. Located close to this Building is the children's playground, Horseshoe Courts, Archery Range, Croquet Court, Camp Fire Center and The Camp Store.



This view of the two-room cabin is typical of many others which are located among the giant pines.



The cabins along the river are so located as to give one an unobstructed view of the stream.

SCENIC TRIPS

HIKING

FISHING

SWIMMING

CAMP FIRES

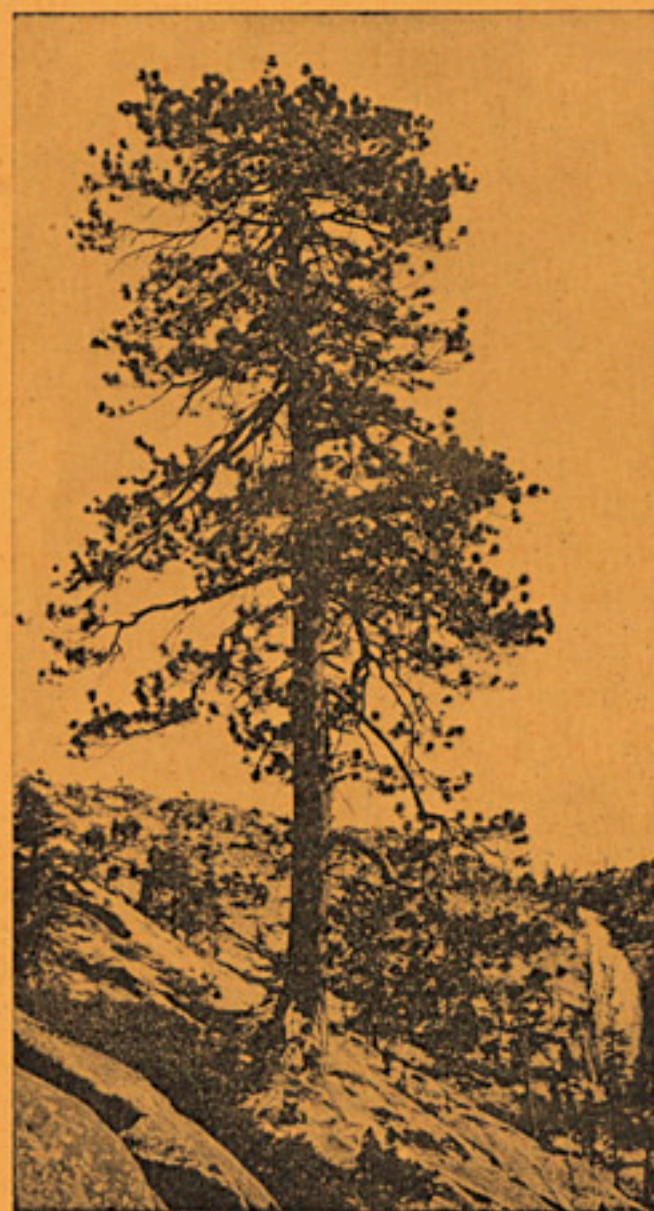
ARCHERY

HORSESHOES

BASEBALL

DANCING

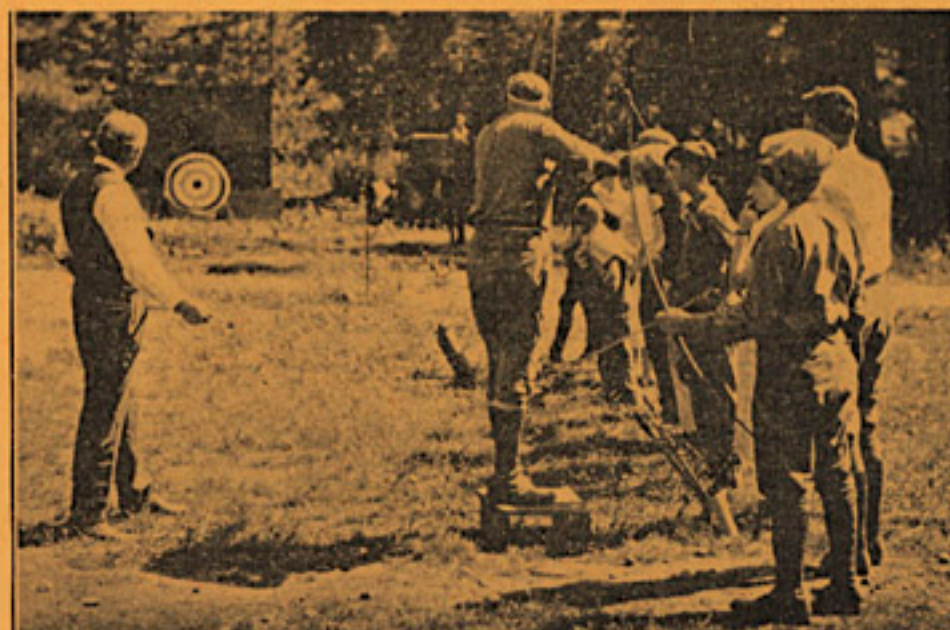
ENTERTAINMENTS



It takes a real hiker to make the trip to Horse-tail Falls, but one is well repaid for the effort.



Swimming is safe at Camp Sacramento. The river is not too shallow and not too deep.



The bulls eye is the target for many hours of sport. Children and adults alike spend hours at the archery range.