

TRAVEL BY WATER



Through
the Heart of
California

**SAN FRANCISCO
SACRAMENTO
STOCKTON**

CALIFORNIA TRANSPORTATION COMPANY

TIME TABLE

SAN FRANCISCO AND SACRAMENTO PALATIAL STEAMERS "FORT SUTTER" "CAPITAL CITY"

Daily, Except Sunday

Passengers and Through Freight (only)

6:30 p. m. leave.....SAN FRANCISCO.....	arrive 6:00 a. m.
Jackson Street Pier.	
11:30 p. m. leave.....Rio Vista.....	leave 11:15 p. m.
12:10 a. m. leave.....Isleton.....	leave 10:40 p. m.
1:00 a. m. leave.....Ryde.....	leave 10:00 p. m.
1:20 a. m. leave.....Walnut Grove.....	leave 9:40 p. m.
1:40 a. m. leave.....Grand Island Wharf.....	leave 9:20 p. m.
1:45 a. m. leave.....Vorden.....	leave 9:15 p. m.
2:20 a. m. leave.....Courtland.....	leave 8:50 p. m.
3:15 a. m. leave.....Clarksburg.....	leave 8:10 p. m.
6:00 a. m. arrive.....SACRAMENTO.....	leave 6:30 p. m.

Foot of M Street.

These Steamers connect at Sacramento with
NORTHERN ELECTRIC RAILWAY

FOR

**WOODLAND, MARYSVILLE, MERIDIAN, COLUSA,
OROVILLE, CHICO** and way stations.

THROUGH TICKETS SOLD

SAN FRANCISCO AND SACRAMENTO and way landings

PASSENGERS AND FREIGHT

Str. "PRIDE of the RIVER," Str. "ISLETON"

3:00 p. m. leave.....SAN FRANCISCO.....	arrive 1:00 a. m.
Jackson Street Pier	
8:00 a. m. arrive.....SACRAMENTO.....	leave 12:00 noon
Foot of M Street	

SAN FRANCISCO AND STOCKTON

Benicia, Martinez, Pittsburg, Antioch and way landings

PASSENGERS AND FREIGHT (DAILY)

6:00 p. m. leave.SAN FRANCISCO.....	arrive 6:00 a. m.
Washington Street Pier	
6:00 a. m. } arrive.....STOCKTON.....	leave { 10:00 a. m.
6:00 a. m. }	6:00 p. m.

SAN JOAQUIN, MOKELUMNE, OLD AND MIDDLE RIVER LANDINGS

Steamers leave San Francisco, Jackson Street Pier, 12:00 Noon.

OAKLAND SERVICE (Freight Only)

Steamer leaves OAKLAND, Webster Street Wharf, at 12:00 Noon, daily (Sunday excepted) for all stations above mentioned

FARES (Transportation Only)	STEAMER ACCOMMODATIONS
Between SAN FRANCISCO and STOCKTON.....\$1.00.....	MEALS50c.
SACRAMENTO 1.50.....	SINGLE BERTH..... 50c.
WOODLAND..... 2.00.....	STATEROOMS range in price from \$1.00 to \$3.00.
MARYSVILLE 2.80.....	Each stateroom accommodates at least two persons.
MERIDIAN..... 3.30.....	
COLUSA..... 3.55.....	
OROVILLE 3.60.....	
CHICO..... 4.15.....	

MAIN OFFICE, SAN FRANCISCO:
Jackson Street Pier. Telephone Douglas 766

SACRAMENTO OFFICE:
Foot of M Street. Telephone Main 4620

STOCKTON OFFICE:
North Side of Channel. Telephone Main 33

OAKLAND OFFICE:
Foot of Webster Street. Telephone Oakland 8328

CALIFORNIA TRANSPORTATION COMPANY

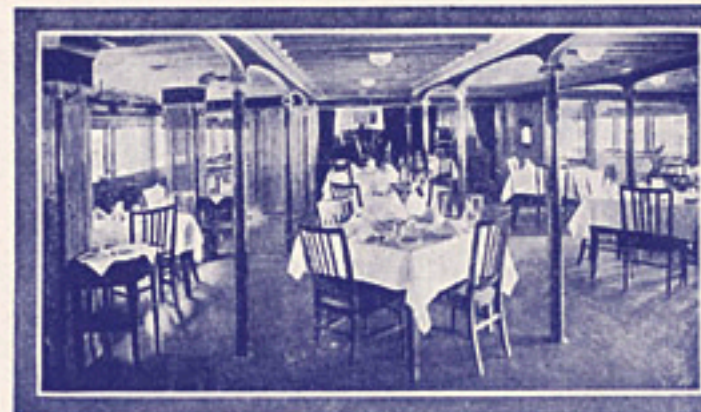
SAN FRANCISCO AND SACRAMENTO

The new Steamers "FORT SUTTER" and "CAPITAL CITY" plying between San Francisco and Sacramento are 1140 tons gross, are constructed with water-tight compartments and an auxiliary fire sprinkler system, and are equal to any steamers on inland waters of the United States, in affording their passengers every **COMFORT** and **LUXURY** afloat.

The **SOCIAL HALL** or **LADIES' PARLOR** on the Saloon Deck is sixty-eight feet in length and is lighted by a magnificent art-glass dome. The furnishings of this spacious room are luxurious and artistic in every respect.



The **DINING ROOM** is also located on the Saloon Deck off the main Lobby. This room is finished in white cedar and mahogany and is surrounded by large plate glass windows. An **EXCELLENT DINING SERVICE** is maintained at very reasonable rates.



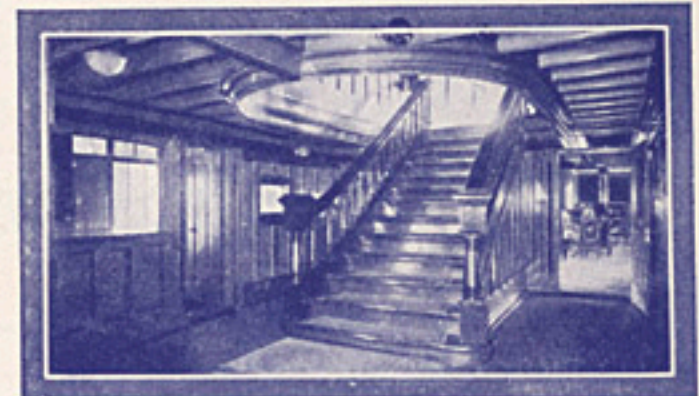
From the main Lobby a handsome mahogany staircase leads to the **OBSERVATION ROOM** on the deck above forward. This room is furnished with easy chairs

and writing desks for the convenience of passengers, and the large plate glass windows afford a panoramic view of the surrounding country.

The **BARBER SHOP** is conveniently located off the Lobby on the Saloon Deck, and a first-class barber is in attendance.

The **NEWS STAND** is also located just off the Lobby where the daily newspapers, magazines, periodicals, etc., may be purchased.

All **STATE-ROOMS** are equipped with **HOT AND COLD RUNNING WATER**. The large rooms on the



Observation Deck are arranged en suite and furnished with double brass bedsteads, and a number of these rooms are provided with **PRIVATE BATH**.

The family rooms on the upper deck are provided with double lower and single upper berths, conveniently accommodating three persons.

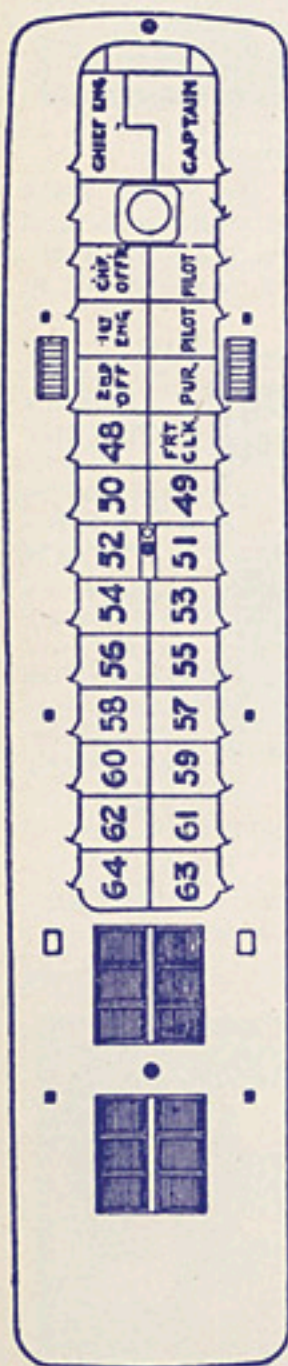
DINING SERVICE UNEXCELLED

CABIN PLAN

Str. "FORT SUTTER"

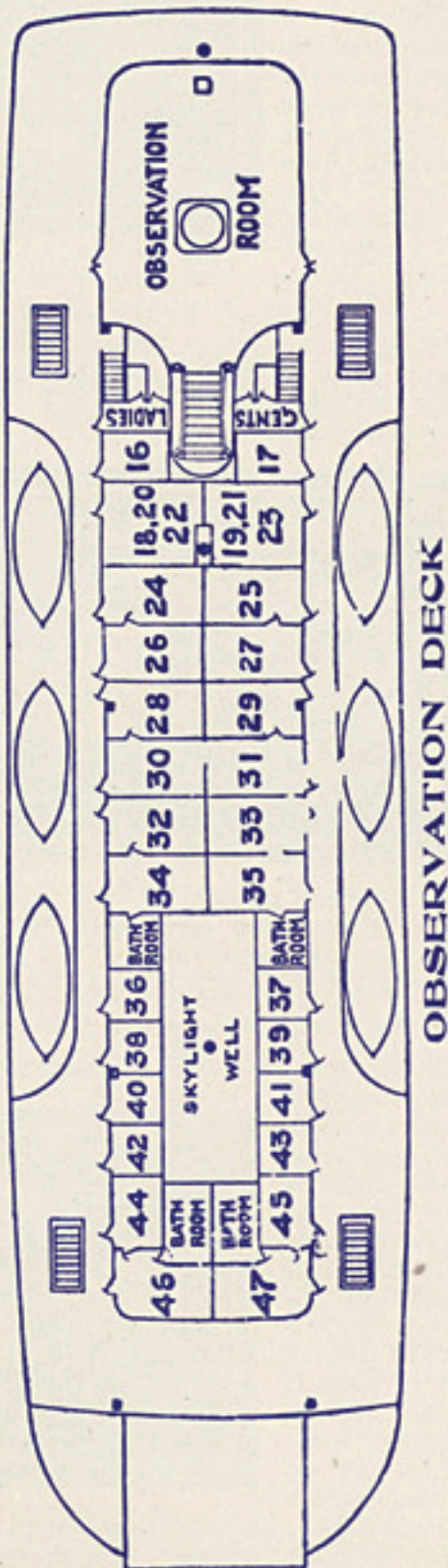
Str. "CAPITAL CITY"

SISTER BOATS



TEXAS DECK

All rooms on Texas Deck contain two berths—one double berth (lower) and one single berth (upper). Rooms 61, 62, 63 and 64 are omitted on Str. "CAPITAL CITY."



OBSERVATION DECK

PORT SIDE

Room No. 16—Two Berths.
 Rooms No. 24, 26, 28, 30, 32—Double Brass Bedstead.
 Rooms No. 34 and 46—Double Brass Bedstead—Private Bath.
 Rooms No. 36, 38, 40, 42—Two Berths.
 Rooms No. 17—Two Berths.
 Rooms No. 25, 27, 29, 31, 33—Double Brass Bedstead.
 Rooms No. 35 and 47—Double Brass Bedstead—Private Bath.
 Rooms No. 37, 39, 41, 43—Two Berths.
 Room No. 45—Double Berth.
 Rooms containing Double Brass Bedstead are arranged en suite.

OBSERVATION DECK

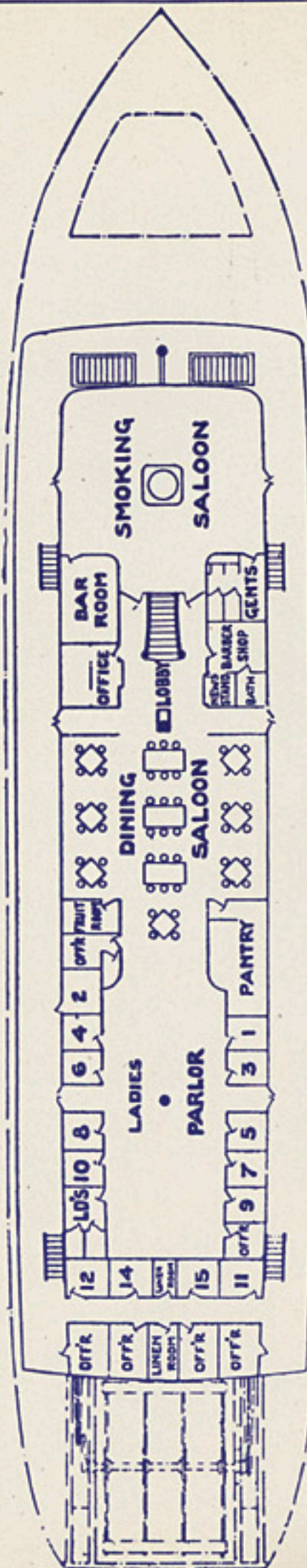
Room No. 18, 20, 22—Single Berths.
 Rooms No. 19, 21, 23—Single Berths.
 Rooms No. 25, 27, 29, 31, 33—Double Brass Bedstead.
 Rooms No. 35 and 47—Double Brass Bedstead—Private Bath.
 Rooms No. 37, 39, 41, 43—Two Berths.
 Room No. 45—Double Berth.
 Rooms containing Double Brass Bedstead are arranged en suite.

STARBOARD SIDE

Room No. 16—Two Berths.
 Rooms No. 24, 26, 28, 30, 32—Double Brass Bedstead.
 Rooms No. 34 and 46—Double Brass Bedstead—Private Bath.
 Rooms No. 36, 38, 40, 42—Two Berths.
 Rooms No. 17—Two Berths.
 Rooms No. 25, 27, 29, 31, 33—Double Brass Bedstead.
 Rooms No. 35 and 47—Double Brass Bedstead—Private Bath.
 Rooms No. 37, 39, 41, 43—Two Berths.
 Room No. 45—Double Berth.
 Rooms containing Double Brass Bedstead are arranged en suite.

LEAVE SAN FRANCISCO 6:30 P. M.

LEAVE SACRAMENTO 6:30 P. M.



SALOON DECK

All rooms on Saloon Deck contain Two Single Berths.

PRICES OF STATEROOMS RANGE FROM \$1.00 TO \$3.00.

RESERVE STATEROOM ACCOMMODATIONS BY TELEPHONE