

# Automobile Construction —

Body building, blacksmithing, spring-making, radiator repairing and sheet metal work are a branch of work in which "**Albright's**" **Daylight Plant** excels.

Then there is auto painting by our bake-oven process and auto trimming and upholstering by factory experts. No matter what your needs may be, you can get better service in our daylight plant.

**S. S. ALBRIGHT CO.**

13th and U Streets



TROUBLE? 4340

## Arnold Bros., Inc.

### Public Garage



Never Closed

Painting, Trimming and General Repairing for All Makes

GOODYEAR SERVICE STATION

Complete stock of TIRES and TUBES at all hours.  
We carry a complete stock of Accessories and Supplies.

**ARNOLD BROTHERS**  
1300 K Street Sacramento, Cal.



A Combination  
Hard to Beat



## J. J. Jacobs Motor Co. Service

AND THE

New Series

# Studebaker

**J. J. Jacobs Motor Co.**

Studebaker Distributors

1500 K Street

Main 714

## Moreland

Distillate

## Motor Trucks

Made in California to meet  
California conditions

**200 in Use in This Territory**

ASK THE DRIVER

FACTORY BRANCH

**Moreland Motor Truck Co.**

821 12th Street

Phone Main 762

Sacramento, Cal.





### THE DAYLIGHT PLANT.

From a modest beginning in a 28 by 60 two-story building just a trifle more than nine years ago to a plant now occupying approximately 30,000 square feet of space, thoroughly modern and splendidly equipped in every detail, is the story of the rapid growth of the S. S. Albright Co.

October 20, 1909, on Twenty-fourth, between "K" and "L," S. S. Albright started his little carriage shop, and the quality of his work soon attracted a large following. In a short time more space was necessary, and still more and more, until finally on October 31, 1916, the S. S. Albright Co. moved to its present location on Thirteenth and "U," where a space of approximately 30,000 feet is devoted to automobile construction in all its phases, body building, blacksmithing, bake-oven auto painting, trimming, radiator and sheet metal work.

Besides, this progressive firm also successfully handles the agency for BROWNTRUCK and LONGFORD truck attachments and Reliance Trailers.

The BROWNTRUCK Attachment enables the owner of any make of pleasure car, either new or used, to be conveniently converted into a capable, finely constructed truck of from one to three ton capacity. This enables the man with a hauling problem to solve it at the least possible cost.

The LONGFORD Truck Attachment makes the ordinary Ford roadster or touring car into a three-quarter ton truck. The wheel base is increased to 136 inches, thus providing a loading space of eight feet back of the driver's seat. The original Ford is thoroughly reinforced and the same pneumatic tires are used.

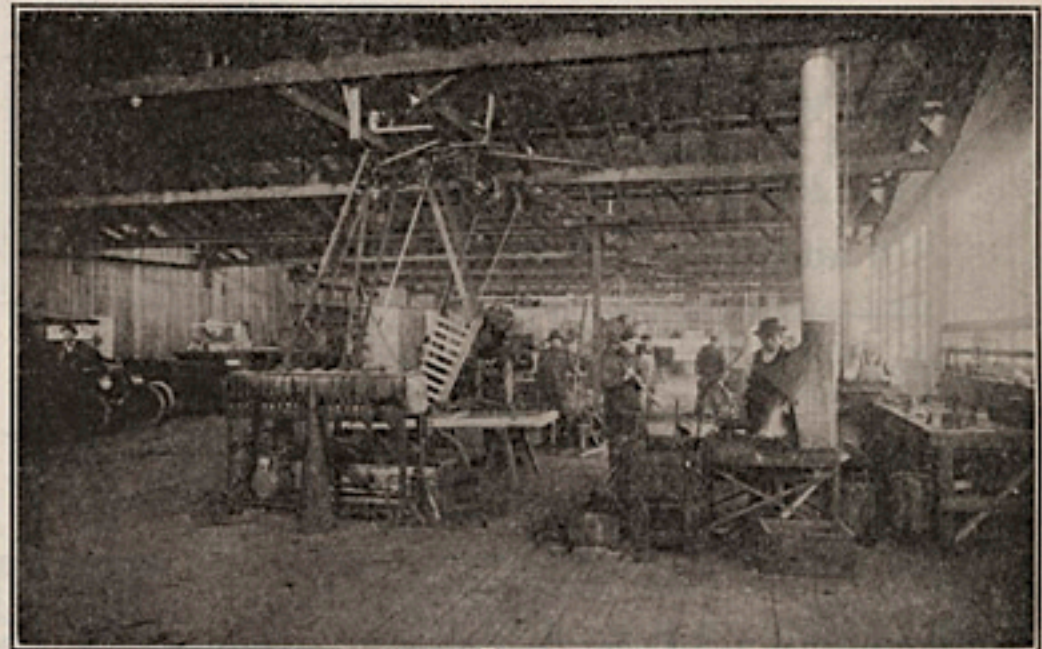


The Reliance Trailers permit greatly increasing the hauling capacity of a motor truck without appreciably burdening it. It is a well known fact that a man, a horse, or a motor truck can pull more than it can carry—consequently one or more Reliance Trailers is the ready solution of rapidly increasing hauling problems at a greatly reduced cost.

One of the outstanding features and one that invariably impresses every visitor to the plant is the continual flood of daylight. By means of a saw-tooth roof a great abundance of natural light is made possible at all times. This permits the men in the various departments of the plant to do their work under the best possible conditions. It also eliminates electric light bills, thus reducing overhead expense, and, finally, the cost of the finished work. More than this, the plant is finely ventilated and so arranged that every detail is handled with the least possible loss of time and effort.

Body building of all kinds—pleasure cars, stage bodies, bus bodies, truck bodies, delivery bodies, etc.—are a very special feature in which the Albright Co. has earned an enviable reputation for the sturdiness of its construction.

Recently several specially designed passenger car bodies have been started in the body building



department, and they have attracted the attention of every one who has visited the plant and seen them. A specially designed passenger car body permits the owner to incorporate his own ideas as to convenience and such other special features as may appeal to him; at the same time giving him the benefit of the unusually careful construction that enters into every piece of work turned out by the Albright Company. Hearse bodies also have been given very careful study and attention and some of the finest jobs of this kind that can be found in the Sacramento Valley are products of the Albright plant.

Blacksmithing, spring-making and repairing, and auto chassis lengthening are also an important branch of this firm's service.

A special spring furnace and special tempering processes enable the Albright Company to build a complete spring or to make accurate, satisfactory and lasting repairs of broken sections of springs. This is just a Special Feature of the blacksmithing department, which is equipped to handle all classes of blacksmithing work, including auto chassis lengthening.

But, perhaps, most important of all is the bake oven process employed in the final finishing of automobile painting. This process gives to the varnish



finish a permanance that outclasses and outwears the finest factory job.

Recently the auto trimming department was moved into larger and more convenient quarters, due to the great volume of work attracted to this department through the exceptionally fine work turned out—particularly, the beautiful “De Luxe” tops.

In order to meet a continual demand for radiator and sheet metal work a department devoted to this class of automobile construction has just been installed. Special attention is given the automobile, truck and tractor radiator repairs as well as to fender repairs, straightening bent or jammed fenders and removing dents from automobile bodies. All other phases of sheet metal work are given the accurate attention of expert workmen assisted by the best of modern equipment.

All in all, the S. S. Albright Company plant is a credit to the community in which it is situated, catering to a large volume of business through the entire Sacramento Valley and extending well into the San Joaquin Valley.

Visitors to the Albright plant are welcome at any time, and those who are interested in seeing one of the best arranged plants of its kind on the Pacific Coast will be more than delighted with the systematic arrangement and efficiency methods employed here.





# **PAINT Your Car a Victory Color**

The new victory colors are attracting the attention of many motorists whose cars need painting. Why not choose one for your car?

Pershing Green.

Rheims Gray.

Joffre Blue.

Verdun Maroon.

St. Mihiel Brown.

Armistice Yellow.

Victory Red.

Italian Cream.

You know, of course, that an "Albright" paint job is done by expert workmen, using the finest materials. It is then finished in scientifically constructed bake ovens that give a luster and permanence that's unequaled.

## **S. S. Albright Co.**

**13th and U Streets**

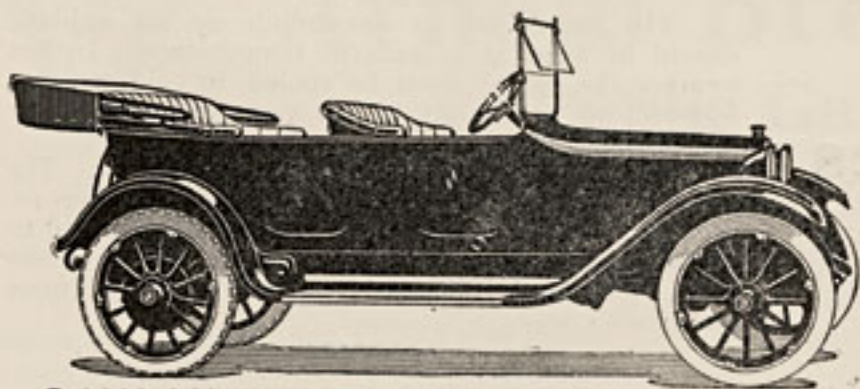
**Phone Main 709**

# DODGE BROTHERS MOTOR CAR

There is always a public waiting somewhere for more of  
Dodge Brothers cars than the works can deliver.

That situation has existed now for more than three years.  
People rarely ask questions now about the mechanical  
construction of the car.

Performance, material and construction are taken for  
granted.



## MILLER AUTOMOBILE CO.

SACRAMENTO

1615 M Street

Main 252

CHICO

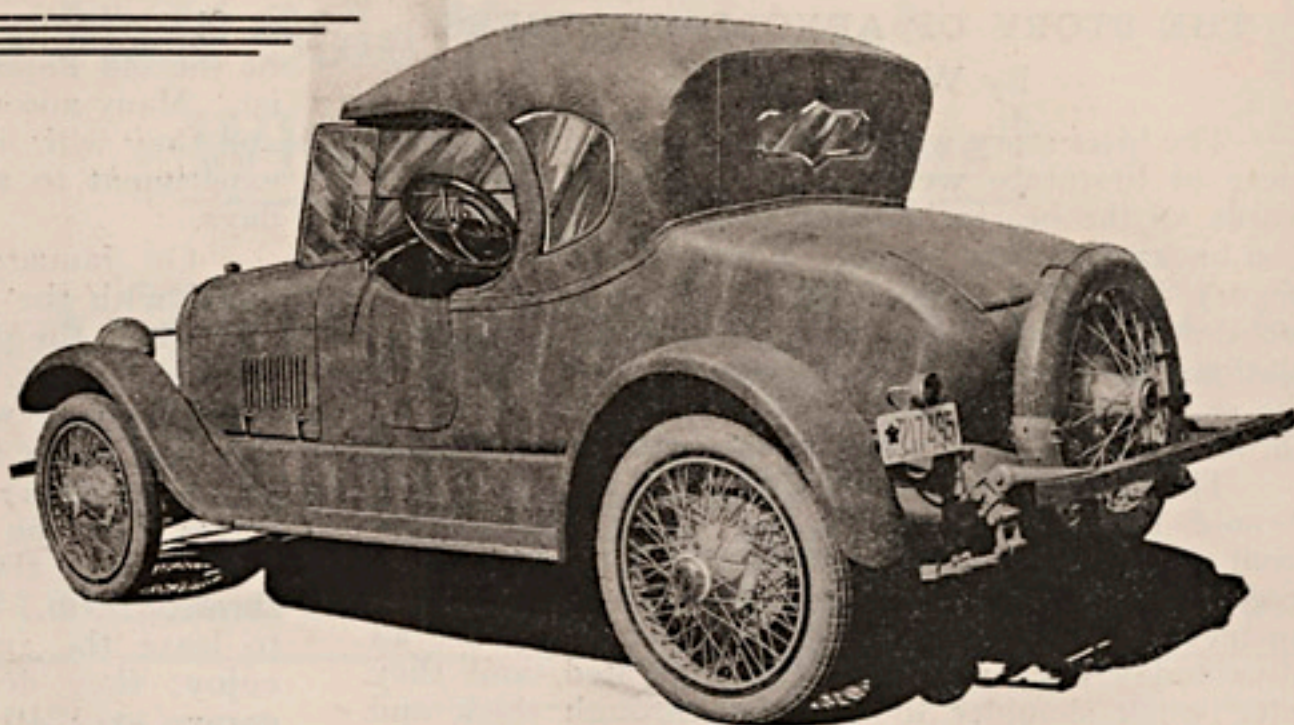
REDDING



**S. S. ALBRIGHT, Vice-President.**  
**Sacramento Auto Trades Association.**



---A pleasure car  
body specially  
designed and  
built by  
"Albright"



The classy job shown here is finished in blue-grey craftsman's leather, the fenders and body being covered with it, the top and upholstery likewise of the same material. The chassis is painted Roll's-Royce blue and the wheels are Italian cream in color. The interior is beautifully appointed and painstakingly finished. It is the kind of a car a particular owner thoroughly enjoys.

Why not have a car body designed to suit your own individual personal taste—something exclusive and "different," like the beautiful sport roadster shown here? Just give us your idea. We'll supplement it with a few suggestions and then submit sketch for your approval.

**S. S. ALBRIGHT CO.** 13th and "U"  
Phone Main 709

#### CAR SHOULD BE READY FOR TRIP.

The touring season is now at its height and hundreds of automobile parties are leaving the city every day for long and short trips. The mountains of California are the attraction that draws at this season of the year. Most of the mountain roads are now in as good condition as they will be this year.

It is a strange thing, but still many motorists start on mountain trips without proper preparation and some of them have trouble, and find that they have not the proper tools along to make repairs.

First of all be sure that the car is in perfect shape before you leave the city. This means that all grease cups must be filled and adjusted, springs greased and in condition, with all the leaves intact, motor tuned up so that the maximum amount of power is delivered to the rear end, and all the nuts and bolts tightened up so that there is no play.

Take along plenty of oil. A car uses more oil in the mountains than in every day touring in the city and if you run out of oil you will surely have trouble. Look at the oil gauge often to make sure that you have plenty in the crank case.

Tires are important—more so than you imagine. Tire trouble may mar the trip if you are not properly prepared. Have at least one good spare tire ready to be put on the wheel and a couple of extra tubes, wrapped up to keep them from chaffing and in good condition. Have a tire pump and a jack.

Carry chains along, you will be on the safe side. You never can tell when you will run into a thunder shower or a heavy rain in the mountains. See that the tires are all in good condition and that the best two are on the rear wheels. Be sure that the tubes

are right so that you will not be bothered with slow leaks. You know there are few power air pumps in the small town garages in the mountains and it is hard work to pump the tires up by hand to the proper pressure.

You should have a complete set of tools so that you will have the proper tool when you want it. When you stop on the road or at a hotel for the night and inspect the car, tighten up any nuts and bolts that may have worked loose, jarring over the mountain roads.

These few suggestions may serve to bring others to your mind that will help to make the vacation tour one to be long remembered because of freedom from mechanical annoyance.



If you are driving, don't try to talk to persons in the tonneau.

Rest is good medicine, but overdoses of anything are dangerous.

Your position in life is high or low as your ideals are high or low.

Slow down when a horse shows signs of fright, and, if necessary, stop the engine.

Don't speed up to pass a street car that is slowing down.

A tire will "give out" sooner from overloading than from almost any other cause.