

SACRAMENTO SOUVENIR GUIDE



MAY
1911

SUTTER ENGRAVE

Sacramento Souvenir Guide


DEVOTED TO THE INTEREST OF

The Tourist, the Commercial Traveler
and all Visitors to Our
City and Vicinity

Contains Time Tables of all Trains and Steamers, and all
Stage Lines In and Out of Sacramento; also
Gives General Information to all
Points of Interest In and
Near the City of
Sacramento

APPROVED BY THE
CHAMBER OF COMMERCE
AND THE
SACRAMENTO RETAIL MERCHANTS ASSOCIATION

This valuable little book can be found at all Hotels, principal Railway Depots and other Public Places. Copies of the Guide will be mailed to any address in the United States upon request by sending your name and address and postage to cover same at the rate of two cents per copy.

Published in Sacramento, California, Every Month by
WILLIAM E. TERWILLIGER  305 JAY STREET, Phone Main 694

Bank With the "Popular Bank"

You can open a Check Account with \$50.00

You can open an Interest Paying Account with \$1.00

WE SELL TRAVELER'S CHECKS, GOOD ANYWHERE



OFFICERS

PRESIDENT

A. L. Darrow

1ST VICE PRES.

W. O. Bowers

2ND VICE PRES.

L. P. Dodson

CASHIER

J. F. Azevedo

ASST. CASHIER

F. J. Allen



DIRECTORS

W. O. Bowers

F. H. Krebs

W. C. Walker

O. G. Hopkins

L. B. Hinman

Jos. E. Green

Chas. Cunningham

J. P. Hynes

L. P. Dodson

A. L. Darrow



Out drafts will be honored in any large city in the world

Fort Sutter National Bank

Sacramento - - California

"SAY YOU SAW IT IN SACRAMENTO SOUVENIR GUIDE"

CONTENTS

	Page.
Sacramento—A City with a Big Future.....	4
Our Climate	5
Population	7
Health of Our City	7
Building Report	7
Financial Standing	8
Post Office	8
Facts About Sacramento and the Valley	9
Points of Interest	11
State Capital	11
State Insectary	13
Sacramento High School	13
Oak Park	13
Sun Dial.....	13
Sutter Fort	15
Ostrich Farm	15
Swimming Baths	17
E. B. Crocker Art Gallery	17
Official Program California Pharmaceutical Association.....	19-20-21
Macadam Roads Out of Sacramento.....	23
Places to Go Near Sacramento	24
Down the River	24
To Feather River Canyon	24
Up the Sacramento Valley	24
To Stockton	25
Court House	26
City Hall	26
Churches	27
Theaters and Amusement Places	28
Events of the Month	29
Office Buildings, Banks and Hotels	31
Clubs, Societies and Other Organizations	33
Asylums, Homes and Hospitals	33
Local Street Car Service	34-35
Gentle Hints to Strangers	35
Southern Pacific Time Table—East and West.....	36
Southern Pacific Time Table—North and South.....	37
Western Pacific Time Table	38
Northern Electric Railway Time Table	39
Central California Traction Co. Time Table	39
Up and Down River Steamers Time Schedule	40
Stage and Auto Routes Time Table	40

"SAY YOU SAW IT IN SACRAMENTO SOUVENIR GUIDE."

Sacramento a City with a Big Future

By S. GLEN ANDRUS, Secretary-Manager Chamber of Commerce

There is probably no city in the United States, certainly none on the Pacific Coast, where so many important epoch-making facts have taken place in so short a space of time as in Sacramento. This city has, within the space of two years, completely changed in character and in possibilities. Up to that period, Sacramento was known chiefly as the Capital City of the State of greatest resources, finest climate and most magnificent scenery of all States in the Union. This was sufficient for it to acquire a reputation as a Capital City, but it retarded rather than advanced its business welfare. The important fact about Sacramento is that it is the center of the greatest development on the Pacific Coast.

Frank A. Vanderlip, President of the National City Bank of New York, and representative of the most powerful financial interests in the United States, when on a recent visit to Sacramento at the invitation of the Chamber of Commerce said:

"I could not be modest if I lived in a city that was the center of the greatest agricultural empire in the world, an empire of six million acres of fertile land. This empire has merely been scratched, and I do not think that the people of this city yet realize what is in store for them."

Sacramento is, therefore, worthy of the careful consideration of every visitor to the Pacific Coast. If the visitor is acquainted with conditions in the Sacramento Valley he will be impressed with the fact that this city is destined to have a population of several hundred thousand.

The opening of the Haggin Ranch, with its 44,500 acres of fertile land, lying at the very doors of Sacramento, is of itself sufficient to increase the population of this city by at least 50,000. There is, also, the possibility that lies in the reclamation of 100,000 acres of river bottom land; in four million acres of fertile land north of Sacramento, and in at least 200,000 acres of productive land which has recently been put under irrigation in the immediate vicinity of Sacramento.

Another great fact which is rapidly putting Sacramento on the commercial map is the expenditure of \$1,000,000 or more in straightening the Sacramento River near the bay and in dredging it to a depth which will permit of the largest ocean steamers tying at the docks. When this shall have been accomplished

Sacramento will not only be the Capital City of the greatest State in the Union, but will also be a great seaport and the mistress of an agricultural domain that will be the wonderment of the world.

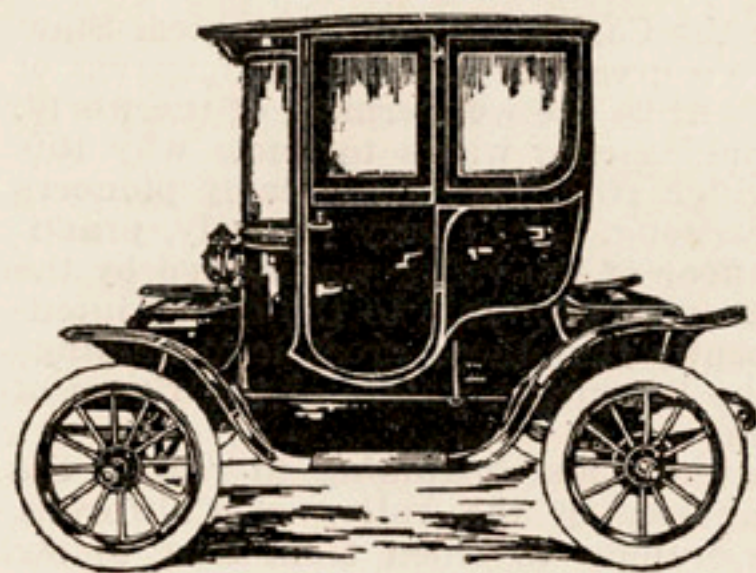
Naturally the visitor to Sacramento wants to know why this great agricultural empire which so attracted the early pioneers has remained undeveloped so long. Until very recently, practically all of the land on the floor of the valley was owned by the "wheat barons," and none of it was for sale to the small, intensive farmer. It is only recently that these great land holdings have been broken up, and the life-giving waters of the rivers of the valley turned upon them.

Furthermore, agriculturists are just beginning to realize the value of the climatic peculiarity of the valley of California, which is such as to cause oranges to ripen from four to six weeks earlier in the Northern than in the Southern portions of the State. These facts, and others of perhaps less importance in the development which is now going on in the Sacramento Valley, are gaining wide publicity and the attention of millions of people is being directed towards the former somnolent Capital City of California.

SACRAMENTO CLIMATE

Warm, sunshiny days and cool nights are typical of Sacramento summers. There are only 53 days throughout the year on which rain falls; 56 days are cloudy, and these are practically identical with the rainy, leaving 229 days of bright, clear weather with unclouded skies, and 80 that are partly cloudy. The highest temperature ever recorded was 110°, which is the same as the highest recorded at Los Angeles. People who live in humid atmospheres have no conception of how little discomfort a temperature of 100° or more causes in the dry air of the Sacramento Valley, as compared with much lower temperatures at many other places. The 100° mark is seldom reached in summer, and when it is, the warm days are generally followed by nights with cool, southeast, ocean breezes. In winter temperatures below freezing are rare, and generally occur at a time when little damage can be done to vegetation; the lowest temperature recorded in the past 33 years was 19°.

The annual rainfall is about 20.00 inches, and it occurs mostly from November to May, by which time the soil is sufficiently moist to, with the addition of a little precipitation that occurs later, develop the grain and voluntary hay crops. Other crops respond rapidly to irrigation.



THE BEST IN ELECTRIC AUTOS

LARGEST EXCLUSIVE
ELECTRIC
GARAGE AND SALESROOM
ON THE COAST

FRED. T. KITT

1910-1912-1914 M. STREET :- SACRAMENTO, CAL.

TELEPHONE

ELEVATOR SERVICE

BATHS

Columbia Hotel

709 J ST., BET. SEVENTH AND EIGHTH STS.

SACRAMENTO, CAL.

New and Strictly Modern :- Centrally Located

En Suite With Private Bath

EUROPEAN PLAN. \$1 PER DAY AND UP

MRS. D. M. DIGGS, Proprietress

Within one block P. O.; half block N. E. & C. C. T. Co.

"SAY YOU SAW IT IN SACRAMENTO SOUVENIR GUIDE"

MEAN TEMPERATURES AND RAINFALL.

Temperature											
Jan.	Feb.	Mar.	April	May	June	July	Aug.	Sept.	Oct.	Nov.	Dec.
46°	50°	54°	58°	64°	70°	74°	73°	70°	62°	54°	47°
Rainfall											
Jan.	Feb.	Mar.	April	May	June	July	Aug.	Sept.	Oct.	Nov.	Dec.
3.69	3.14	3.01	2.00	0.98	0.15	0.00	0.01	0.39	1.04	2.15	3.53
Annual mean temperature for Sacramento, 60 degrees. Annual mean rainfall, 20.00 inches											

POPULATION In a recent issue of one of our local papers, comments were made by a number of eminent citizens as to their opinion of the population in 1920. Most predicted 150,000, a figure most likely from present indications. The population, like the city itself, is making leaps and bounds; the census taken in 1905 showed us a total of 29,864, and in 1910 a total of 44,696, a gain of 14,832 in five years, or on an average of 3,000 a year, and as the average shows a larger increase from one year to the other, it is safe to state we will have a population of 65,000 or 70,000 in 1915, the year of the greatest World's Fair in the history of the universe, thenceforth to 1920 the prediction above is a fair estimate.

HEALTH OF OUR CITY The Department of Health of the City of Sacramento consists of a board of five physicians. The Secretary of the Board, also City Physician and Health Officer, is appointed by the Board. The Receiving Hospital, conducted under the guidance of this department and equipped with the Police Emergency Ambulance, renders efficient aid to the injured. A Free Dispensary is conducted for the poor. School children are vaccinated free of charge, and are under the observation of a School Nurse. All contagious diseases are reported to the Health Officer and placed under quarantine. The general sanitary conditions about the city are good, and the death rate, compared with the leading cities of the world, is low.

The city is provided with a DeCarie garbage crematory and an efficient drainage and sewer system. The cesspools and the plumbing are constructed under the guidance of this department; the milk, meat and food supplies are under continual observation, and kept at a high standard.

BUILDING REPORT As shown in the City Clerk's office, the total permits aggregated \$2,326,606.00 in 1910, against a total of \$2,063,394.00 in 1909. Showing a gain of \$263,312.00 over the preceding year, the permits for January of this year amount to \$275,525.00.

"OUR AIM" IS TO REACH 150,000 IN 1920.

The building activity of Sacramento can only be realized by one who has been away from the city a year or so, and to a visitor in our city, no matter if he be capitalist, mechanic or laborer, can find many opportunities to invest with good returns, and for the latter to find employment to his advantage, a ride on any street car will give you an idea in the resident section the numerous new homes being built; some just starting, and many just finished.

FINANCIAL STANDING Sacramento stands fourth in rank of California clearing houses. The following figures show the statement of the Sacramento Clearing House for 1909 to 1910, monthly:

	1909.	1910.	Increase.
Jan. -----	\$ 3,865,408.79	\$ 4,994,782.66	\$ 1,129,073.87
Feb. -----	2,919,625.95	4,590,404.71	1,670,798.76
March -----	3,892,713.34	5,936,001.97	2,043,288.63
April -----	4,427,146.97	5,530,551.44	1,103,404.47
May -----	4,017,344.20	5,173,549.12	1,156,204.92
June -----	4,581,169.15	5,328,561.82	747,392.67
July -----	4,788,787.72	5,591,592.45	802,804.73
August -----	4,835,042.04	5,468,016.15	632,974.11
Sept. -----	4,804,176.89	6,251,175.49	1,446,998.60
Oct. -----	4,925,118.10	6,758,973.83	1,833,855.73
Nov. -----	5,969,756.38	7,291,917.51	1,322,361.13
Dec. -----	5,486,433.69	7,955,469.98	2,469,036.29
	\$54,512,723.22	\$70,870,997.13	\$16,358,273.91

POST OFFICE Or Federal building is located at the corner of Seventh and K Streets. Besides being the General Post Office, it is also the offices of Internal Revenue, U. S. Land Office, Weather Bureau and U. S. Geological Survey.



It was built in 1893, at a cost of \$400,000, and is faced with red sandstone. An addition is being made on the rear, to cost \$120,000, as the increase of business demands it.

"SACRAMENTO" THE GARDEN SPOT OF ALL CALIFORNIA

FACTS ABOUT SACRAMENTO AND THE VALLEY.

Sacramento is the center of the most fertile section of the entire Sacramento Valley.

Sacramento is the railroad hub of the central and northern part of the Great State of California.

Sacramento is situated on the Sacramento River, the largest and most navigable river in the State.

Sacramento is supplied with an abundance of water from the Sacramento River, which has its source at the foot of Mt. Shasta, in the Sierra Nevada Mountains.

Sacramento has a perfect drainage system.

Sacramento has the best streets and sidewalks of any like city in the State.

Sacramento has the most normal climate of any section of California.

Sacramento is the location of the Southern Pacific shops, as well as other vast manufacturing industries.

Sacramento is soon to have the main snops of the Western Pacific; they are now under construction.

Sacramento is the seat of the annual State Fair, that is growing larger each year.

Sacramento is the railroad terminal point for Northern California.

Sacramento Valey produces practically every kind of fruit and vegetable.

Sacramento is the best lighted city in the world.

Sacramento has a most efficient health board.

Sacramento has a school system unexcelled.

Sacramento has churches, comprising practically every known denomination.

Sacramento is the location of the State Printing Office, and other State offices, as well as the State Capitol.

Sacramento has eight banks, all in a flourishing condition.

Sacramento is blooming with the choicest of flowers, raised out of doors the year 'round.

Sacramento's residential streets are lined with magnificent shade trees.

Sacramento's average temperature is 60 degrees, Fahrenheit.

Sacramento is one of the healthiest cities in the United States.

Sacramento stands at the head of the line in the civic societies on the Pacific Coast.

Sacramento has more railroads entering its borders than any section of the Coast.

A PLACE WHERE CLIMATE IS WORTH TALKING ABOUT.



STOP AT SACRAMENTO...

Among the many other superior features the Capital City possesses is a modernly appointed Drug Store where every Drug and Store convenience is accorded the local and traveling public.

To the stranger we have a cordial welcome and offer you our best efforts in supplying the best in Drugs on shortest possible notice.

We want you to feel free to phone us from your hotel at any time for anything. Our quick delivery is prompt and courteous.

If you favor us with a call we offer the best attention. Free Phone service at your command. Make use of our Ladies' Waiting Room and write your letters here.

YOU HAVEN'T SEEN IT ALL
UNTIL YOU'VE SEEN

CASEY & DALTON

PROGRESSIVE DRUGGISTS

530 "J" Street Phone 801

(Take a "J" St. car at Depot and get off at Sixth St.)

POINTS OF INTEREST

STATE CAPITAL Located in the midst of a spacious park of over thirty-three acres in extent; studded by over one hundred and sixteen varieties of trees from most every part of the world, affording an ideal place for one who would seek a quiet spot to read or lounge, with its beautiful shade trees and broad paths, surrounded by Tenth St. on the West, Fifteenth St. on the East, L St. on the North and N St. on the South.

The architecture is of the florid Roman-Corinthian style. The building faces the west on Tenth street, has a basement

and four stories, surmounted by a dome, and contains 146 rooms.

Work on the foundation was commenced on September 24th, 1860. The corner stone was laid on May 5th, 1861, and the building was completed in 1874. The cost of construction was \$2,600,000.



The building was remodeled and improved up to date in 1906-07-08 at a cost of \$373,000, making a total of nearly \$3,000,000. Competent architects have stated that the building cannot be duplicated for \$5,000,000.

Area covered by building is 52,480 square feet. Height of building from grade at base of Capitol to ball surmounting lantern at top of dome, 237 feet. Length of building (greatest dimensions), 320 feet. Depth of building (greatest dimensions), 164 feet. Height of building (not including dome), 94 feet. Length of main halls, 222 feet. Width of main halls, 15½ feet. Size of Senate chamber, 73x56 feet. Size of Assembly, 73x75 feet. Height of Senate and Assembly chambers, 36½ feet.

On entering front or main entrance, we behold the magnificent statue of Columbus and Isabella, donated to the State by the late Darius Ogden Mills, entitled "Columbus' Last Appeal to Isabella." With the following inscription, "I will assume

LOCALITY OF INCONCEIVABLE NATURAL RESOURCES.

ALWAYS

D
E
L
U
X
E

B
U
I
L
D
S

M
E
N
,
S

B
O
N
N
E
T
S

HATTERS DE LUXE
1007 THIRD STREET
SACRAMENTO - - CAL.

the undertaking on behalf of the crown of Castile, and will pledge my jewels to defray the expenses of it, if the funds in the treasury shall be found inadequate."

The statuary was executed by Larkin Goldsmith Mead, an American sculptor of international fame, in Florence; was presented to the State by Mr. Mills, in the spring of 1883, and was placed where it now stands, in September of the same year. The statue is estimated at \$30,000.

It is conducted for the purpose of collecting, propagating and distributing beneficial insects in sufficiently large numbers to be of commercial value, and thus enable all cultivators of the soil in California to produce larger crops of cleaner quality with less cost. The records of the results attained during the past season show clearly that it bids fair to eventually completely fulfill its purpose.

This building is located in the Capitol Park, on the north side of the grounds, at 13th and L streets. Visitors are admitted between the hours of 10 a. m. to 12 m. and 2 p. m. to 4 p. m., week days only. Admission free.

Located on the block bounded by K and L and 18th and 19th Sts. Was completed last year at a cost of \$150,000. It is generally admitted that this High School is one of the finest in the West.



All cars transfer or many run to this beautiful park, located just outside of our city limits, at the terminal of the car line. You can find many things there to interest the children, as well as the grown folks; there is a theater, merry-go-round, shooting gallery, "A Trip to the North Pole," and many other amusements, besides a skating rink that is one of the best on the Coast.

Located at the intersection of Thirteenth and M Streets, a few yards, south of the State Insectary Building, in the Capitol grounds, was placed there in 1910, and is the gift of Mr. S. H. Garrish to the State of California.

AN IDEAL CITY FOR THE HOME SEEKER.

"SAY YOU SAW IT IN SACRAMENTO SOUVENIR GUIDE"



Miss Alan Says: "Hodson's Fotos are Great"

"SAY YOU SAW IT IN SACRAMENTO SOUVENIR GUIDE"

Visitors
SUTTER FORT should not miss seeing this Fort, as it is one of the oldest land marks to be found in the State of California. It was commenced in 1839 and completed in 1844. The original name of the Fort was Helvetia, and was built by John A. Sutter, who used it to live in and carry on the business of raising cattle and horses. Business of different kinds was carried on within these walls by many men associated with Sutter.



The American Flag was first raised over the Fort on July 4, 1846, and was the second American flag raised in California.

It is now the property of the State, and was restored by the efforts of the Native Sons of the Golden West and the people of California.

There can be seen at the fort many relics of the early days, long before and shortly after gold was discovered. Among them are several stage coaches and a prairie schooner; also many pieces of mining tools, cannons, small arms and other interesting articles.

You will find Mr. E. H. Cox in charge, who will be pleased to answer any questions. Admission free.

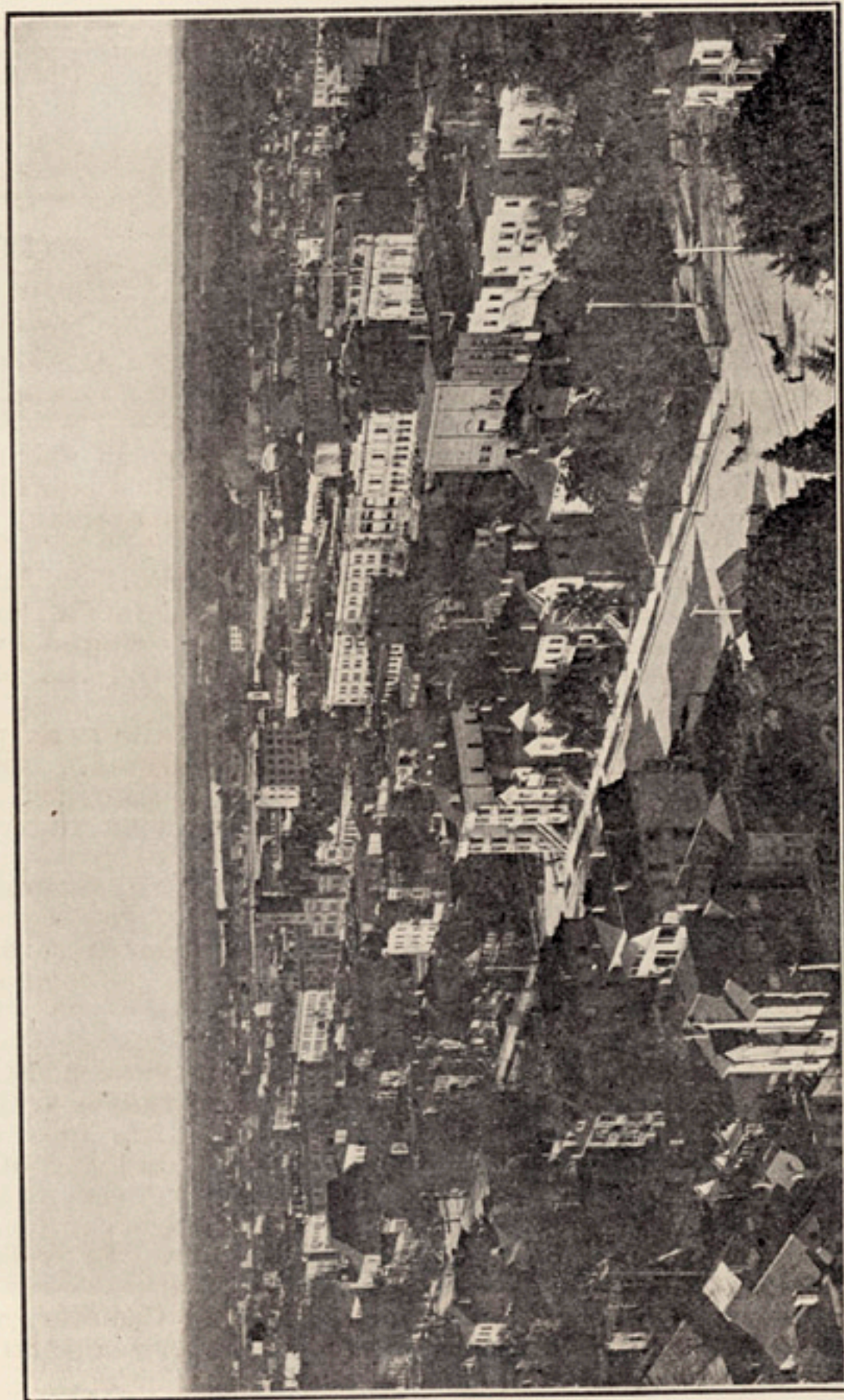
The fort is open every day in the year, from 9 a. m. to 5 p. m.

Take J street or M street car. These cars take you within one block of the fort.

OSTRICH FARM Located on Tenth Street, between W and X Streets. There you will find a very interesting farm, with from fifty to a hundred birds, small and large; some a few weeks old and others from one month to ten years and older. If you wish to purchase, you can do so at the show room, where there can be seen many beautiful plumes finished ready to wear. Take Tenth Street car; get off at W Street.

Two blocks walk south takes you to the City Cemetery, Masonic Cemetery and Odd Fellows' Lawn Cemetery, also to the Baseball Grounds.

PUREST OF WATER, AND PLENTY OF IT.



Sacramento as viewed from the State Capitol Dome, Looking North-west

MUCH CAN BE SEEN FROM THE CAPITAL DOME.

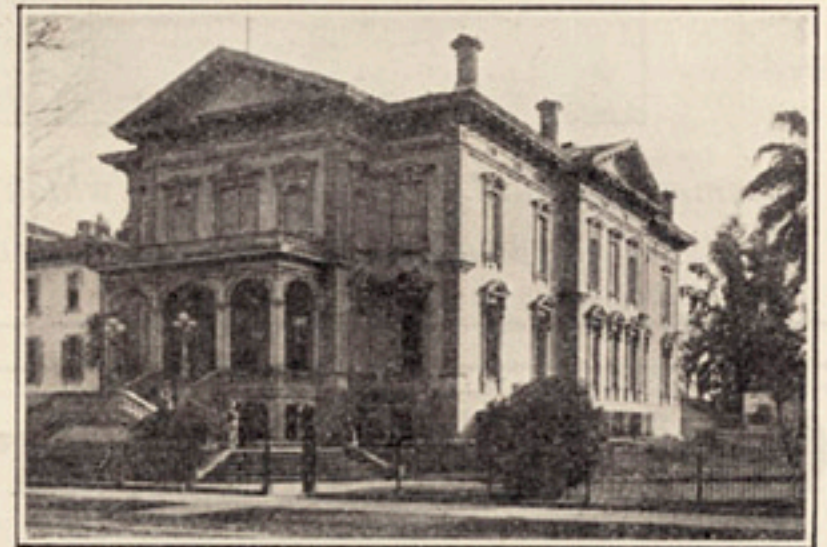
No one should visit our city without taking a **SWIMMING BATHS** plunge in one of the finest public baths in the West; with its clear well water at 85 degrees, natural heat, in the winter, and 83 degrees in summer. Tank is 136 feet long by 65 feet wide; runs on an incline $2\frac{1}{2}$ to 8 feet; also a fine slide. The tank is cleaned out every night and fresh water run in in the morning. There are 550 dressing rooms, with the very best service obtainable.

Admission with bathing suit 25 cents; without suit 10 cents.

Take Tenth Street car; tell the conductor the Swimming Baths.

CROCKER ART GALLERY

To lovers of fine art, this city can offer one of the best collections to be found in any part of the West; in fact, one of the finest in the United States. It is known as the E. B. Crocker Art Gallery; was erected in 1870 by Judge



E. B. Crocker and Mrs. Margaret E. Crocker, to gratify their tastes. Most of the collection is from Europe. The total collection is over 700 paintings and seven pieces of statuary; also a large collection of minerals (the latter is the property of the State); the total values is estimated at three-quarters of a million dollars.

The property and its contents was donated to the California Museum Association and the city of Sacramento, jointly, in 1885, by Mrs. Margaret E. Crocker, then the widow of Judge E. B. Crocker.

The gallery is open every day in the year, except holidays. Week days, 10 a. m. to 4 p. m. Saturdays, 10 a. m. to 12 m. Sundays, from 1 p. m. to 4 p. m. Admission free.

You will find the curator, Mr. W. F. Jackson, at your service, and will be glad to offer any information.

Take any car going to the S. P. Depot, and transfer to any Third street car; get off at Third and O streets; walk to your right half a block.

A CITY OF BEAUTIFUL STREETS AND SHRUBBERY.



Steamer "Capital City" the Boat on which the Pharmaceutical Association will enjoy their Excursion.

Central California Traction Co.



Eight Fast Electric Trains
Each Way Daily
BETWEEN



SACRAMENTO
LODI AND STOCKTON

Roadbed Oiled and Ballasted All the Way
NO SMOKE NO DUST

CENTRAL CALIFORNIA TRACTION CO.

TICKET OFFICE AND DEPOT

1012 Eighth St., Sacramento THOS. KEARNS, Agent

"SAY YOU SAW IT IN SACRAMENTO SOUVENIR GUIDE"

List of Papers to be Read at the Sessions of the California Pharmaceutical Association are as follows

Boosting the Prescription Business in the Residence District.

By Will E. Brenner.

Store Management.

By J. A. Sanford.

A Resume of the Work at the State Pure Food Laboratory.

By Prof. M. E. Jaffa.

State Laws Governing Pharmacy.

By J. G. Munson.

State Board of Pharmacy.

By E. T. Orr.

Evolution of Pharmacy.

By Chas. H. Ward.

Conservation as Applied to Pharmacy.

By G. H. Lichthardt.

Subject to be Selected.

By Dr. Albert Schneider.

Pharmaceutical Laboratory.

By Prof. F. W. Nish.

Pure Foods and Drugs.

By Dr. R. A. Gould.

Application of Analytical Chemistry to Pharmacy.

By Prof. Frank T. Green.

Biologies.

By Prof. Fred I. Lachenback.

Subject to be Selected.

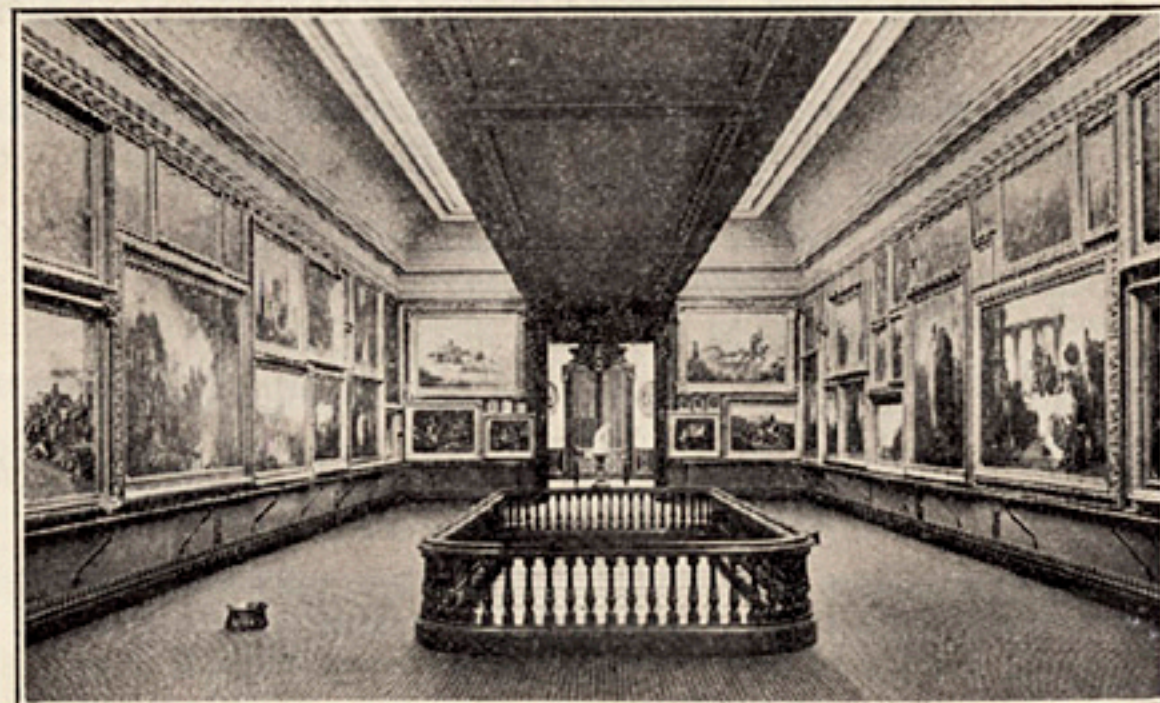
By R. A. Leet.

Salaries of Drug Clerks.

By F. C. Lang.

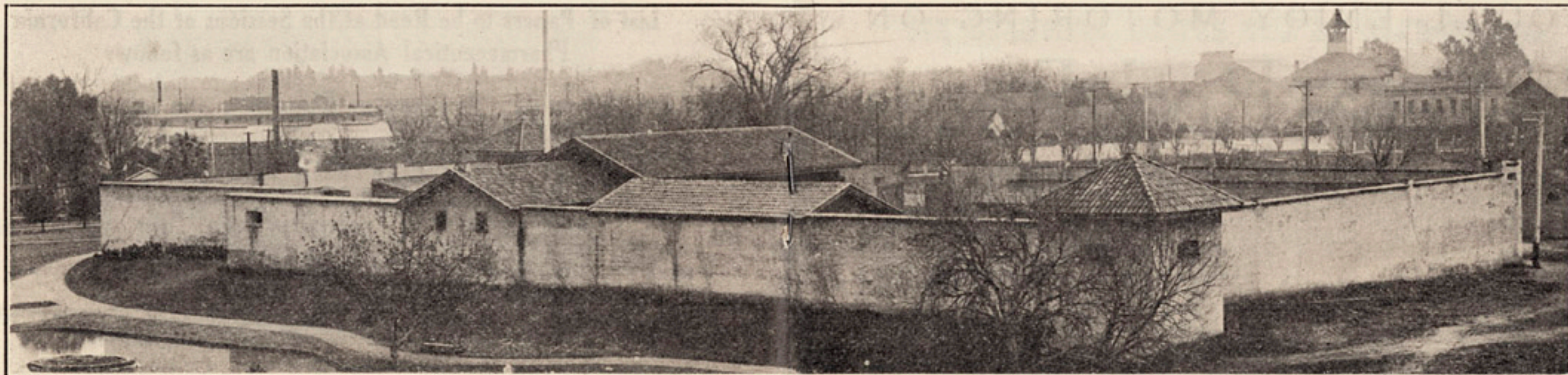
Disinfectants and Insecticides.

By R. R. Rogers.



Interior View E. B. Crocker Art Gallery, where the Ladies will be Entertained

SACRAMENTO IS THE SEAT OF THE ANNUAL STATE FAIR.



FORT SUTTER

OFFICIAL PROGRAM OF THE

California Pharmaceutical Association, May 16th, 17th, 18th, 19th, Incl,

Tuesday, May 16

Visitors will please register on arrival at the Hotel Sacramento corner 10th and K Streets receiving Official Program, Button and Tickets for the entertainments.

2 P. M.

First Session of the Association at Sutter's Fort.

(Take M or J Street cars going East.)

Opening address by.....Hon. M. R. Beard, Mayor of Sacramento

6 P. M.

Banquet.....U. C. Alumni Association

Wednesday, May 17th

10 A. M.

Second Session of the Association at Elk's Hall.

(824 J Street, Take Elevator to Second Floor.)

2 P. M.

Third Session of the Association at Elk's Hall.

During this session there will be an entertainment for the ladies at the Crocker Art Galleries. Music and Refreshments.

(Take any car West on J or K Streets, transfer for Third and O)

7:30 P. M.

Theatre Party at the Pantages Theatre K Street between 6th and 7th followed by Dutch Lunch at the Odd Fellow's Building 9th and K Streets.

Thursday, May 18th

9 A. M.

Excursion on Steamer "Capital City" from City Wharf, Front and M Streets, take any car West, get off at 2nd, walk one block to river, turn to your left, walk two blocks.

Fourth Session on board, Music accompanying, also Luncheon and Dancing, Ladies to accompany, returning at 3 P. M.

EVENING

Subscription Banquet at the Hotel Sacramento, a charge of \$2.50 per plate will be made; this is the only feature of which a charge will be made.

Friday, May 19th

9 A. M.

Breakfast Hotel Sacramento, Woman's Pharmaceutical Association.

Closing Session Elk's Hall.

Election of Officers.

Adjournment!

YOU'LL ENJOY MOTORING ON
Natomas Rock Roads



All the good roads leading from Sacramento are built with
NATOMAS CRUSHED ROCK

The Folsom, Auburn, Placerville and Upper and Lower Stockton Roads are examples of what can be done in permanent road construction where our Crushed Rock is used. At Natoma on the Folsom Road you will see one of the rock crushers where this material is made. These roads wear well under heavy traffic and cost little for maintenance because Natomas rock is hard and durable.

Natomas Consolidated of California
ROCK CRUSHING DEPARTMENT

People's Bank Bldg. SACRAMENTO Tel. Main 740

"SAY YOU SAW IT IN SACRAMENTO SOUVENIR GUIDE"

SIX BEAUTIFUL DRIVES OUT OF SACRAMENTO

Is generally considered the best highway leading from **FOLSOM ROAD** Sacramento. It is a 20-mile oiled macadam Road built two years ago and was the first road of its kind in the county. This road is a continuation of M Street, and passes Brighton, Perkins, Mills and Natoma before reaching Folsom.

UPPER STOCKTON ROAD

Is an extension of P Street. It leads past the race track, the fair grounds and Colonial Heights, connecting with the San Joaquin Highway at the county line. The road is well paved between Sacramento and Stockton, a distance of fifty miles.

AUBURN ROAD

Is perhaps the most beautiful drive out from Sacramento. After going out Twelfth Street and crossing Haggin Grant and past the new city park. Though the road continues to Auburn it is paved for only eighteen miles. This is the newest paved road in the county having been completed late in 1910.

STOCKTON ROAD LOWER

Commences on Y Street between 28th and 29th. It is a well paved road to the county line three-fourths of a mile beyond Franklin, a distance of 23½ miles.

RIVERSIDE ROAD

Is reached by driving out Tenth Street to Y and turning on Y to Eleventh Street. At this point Eleventh Street becomes the Riverside Drive, but the paved portion two miles in length, is not reached until after passing the swimming baths.

PLACERVILLE ROAD

Is well paved with oiled macadam for about six miles from the point where it leaves the Folsom Road at Mills Station. This road goes through a part of the land which will be irrigated by Natomas Consolidated of California.

THERE ARE MANY FINE ROADS OUT OF SACRAMENTO.

Places to Go Near Sacramento

Giving Distance, Time and Cost from Sacramento

DOWN THE RIVER-- A trip on a modern steamer through the wonderful delta lands of the Sacramento River is very delightful, especially in the spring, when the river is high, the fruit trees in blossom and the ground covered with a beautiful carpet of green. The soil of the delta land is of surpassing richness. Crops of potatoes, beans, asparagus, celery, pears, peaches, grapes, cantaloupes, tomatoes and other fruits and vegetables are raised to the value of more than \$10,000,000 annually. Great levees guard these lands from overflow. This trip can be made during daylight from either Sacramento or San Francisco. From Sacramento the steamer leaves at 10:30 a. m., and from San Francisco, 8:00 a. m. Good service and comfortable beds help you to enjoy the night trip on the river. Steamers leave at 5:00 p. m., arriving at San Francisco at 6:00 a. m. Leave San Francisco at 5:00 p. m., and arriving in Sacramento 6:00 a. m. All steamers daily except Sundays. Fare \$1:50; berths 50 cents and up; meals, 50 cents.

FEATHER RIVER CANYON The advent of the Western Pacific has opened up many extremely attractive resorts, penetrating as it does the wonderful Golden Feather River Canyon, with its rock-walled chasm, passing through one hundred miles of the most picturesque scenery of America. Adjacent to its rails are many lakes and streams which hitherto have not been fished, and which abound with "Finny Folk." These waters are reached from Blairsden and Clio, to which points special rates are made for campers and outing parties.

If you contemplate a vacation and you do plan to go up the Feather River Canyon, it don't matter where, better make Portola, the "New gateway to the Golden State," your destination, and return by easy stages, stopping at Quincy and Hartwell.

UP THE SACRAMENTO VALLEY To one who would care to take a one-day trip, there is nothing more delightful than a trip through the Sacramento Valley over one of our new Electric Roads, the Northern Electric Railway, starting

THE MOST HEALTHFUL SPOT THE SUN EVER SHONE ON.

from Eighth and J Streets, we pass out of the city into our future suburbs over the American River, then on over a well-ballasted track, through fruit groves and new farm lands, passing large pasture fields with hundreds of heads of cattle, sheep and horses grazing. But a few minutes has passed, and you are in Marysville, a fast growing city of the Northern Sacramento Valley, with its well established business houses and beautiful homes; thence over the Yuba River on the solid bridge structure to Yuba City. Again we ride along with more beautiful scenery to greet us. Passing through many smaller but busy towns, we come to the junction that takes you to the prosperous mining town of Oroville; thence on to Chico, the present terminal of the Northern Electric Railway, with the well known Diamond Match factory, the largest of its kind. There are many large stores and hundreds of beautiful homes. But a short ride on the local street cars (connected with the N. E. Ry.) brings you to Hamilton City, where a million dollar Beet Sugar Factory is located.

The Chico Hotels are not to be excelled by cities many times its size. Ten miles beyond Chico, by stage, is the famous Richardson Health Springs. You can return the same day, if you wish, as trains run every two hours, both ways.

ON THE WAY TO STOCKTON Over the recently finished electric line, extending from Sacramento to Stockton, a distance of 53 miles and passing through the most fertile part of the Sacramento and San Joaquin Valleys.

The principal city on the main line between Sacramento and Stockton is Lodi, which is a live town with 3,000 population. It is located in the heart of the Tokay grape district, and is surrounded by thousands of acres of vineyards. Over \$5,000,000 worth of grapes were shipped from Lodi during the season of 1910.

Stockton, the southern terminus of the Central California Traction Co., is a city of 30,000 people, and owing to its location at the extreme northern end of the San Joaquin Valley and its excellent transportation facilities, both rail and water, it is the principal distributing point for the entire valley. It is also quite a manufacturing center, there being several flour mills and factories for the making of agricultural implements located there.

The Central California Traction Co. runs eight fast electric trains each way daily between Sacramento, Lodi and Stockton.

NO SNOW, BLIZZARDS, CYCLONES OR SULTRY NIGHTS.

Foundation
CITY HALL on this beautiful building was started on February 15th, 1909, and the building was completed about March 8th, 1910. It cost \$200,000, and is of the Classic style of Buildings.



Main 131

1515 20th St.

CASCADE LAUNDRY

Best Equipped Plant in Northern California

FILTERED SACRAMENTO RIVER WATER IS WHAT WE USE

We can also give you the best service in

DYEING, CLEANING AND RENOVATING

Prompt Service WILLARD WARNER, Mgr. Moderate Rates



Excavating is now going on for a Court House to cost \$450,000, a building to outclass anything of its kind in California. A glance at the picture will give one a fair idea of what the structure will be.

SACRAMENTO'S IMMENSE MANUFACTURING INDUSTRIES

CHURCHES

BAPTIST.

Calvary Baptist ----- 16th & I Sts
 Emanuel Baptist ----- 29th & N Sts
 First Baptist ----- 9th, Bet. L & M Sts
 Shiloh Baptist ----- 6th, near P St

CATHOLIC.

Cathedral of the Blessed Sacrament ----- 11th & K Sts
 St. Francis' ----- 26th & K Sts
 St. Stephens' ----- 3d & O Sts
 St. Mary's ----- N, Bet. 8th & 9th Sts
 Church of the Immaculate Conception ----- 32d & Sacramento Ave

CONGREGATIONAL.

First Congregational ----- 6th, Bet. I & J Sts

CHRISTIAN SCIENCE.

First Church of Christ ----- 23d, Bet. K and L Sts.

EPISCOPAL.

Trinity Episcopal ----- M, Bet. 26th & 27th Sts
 St. Paul's ----- 15th, Bet. J & K Sts

JEWISH.

B'ni Israel ----- 15th, Bet. N & O Sts.

LATTER-DAY SAINTS.

Church of Jesus Christ ----- I, Bet. 7th & 8th Sts
 Latter Day Saints, Reorganized ----- 24th & K Sts

LUTHERAN.

German Lutheran ----- 12th & K Sts.
 English Lutheran ----- 16th, Bet. J & K Sts

METHODIST.

Free Methodist ----- 14th, Bet. O & P Sts

METHODIST EPISCOPAL.

First M. E., South ----- 15th & J Sts
 First M. E. ----- 6th, Bet. K & L Sts
 Central M. E. ----- 11th, Bet. H & I Sts
 St. Andrew's A. M. E. ----- 7th, Bet. G & H Sts

PRESBYTERIAN.

Fremont Park ----- 15th & O Sts
 Westminster ----- 13th & K Sts

SEVENTH DAY ADVENTISTS.

Seventh Day Adventists ----- 23d & K Sts.

EVANGELICAL GERMAN.

Ebenezer Church ----- 10th, Bet. O & P Sts.

PLENTY GOOD SCHOOLS, CHURCHES; MORE BUILDING.

The new Theatre Diepenbrock, at the corner of Twelfth and J streets, Sacramento, is one of the handsomest playhouses in the West. It was erected by M. H. DIEPENBROCK, and represents an investment of \$200,000. It is Sacramento's family theatre, being occupied



by the HENRY McRAE STOCK COMPANY, presenting the best plays obtainable, at popular prices. No interior city of California has so fine a theatre, nor one housing a company more capable or more deserving of the liberal patronage that the people of Sacramento bestow upon this organization.

ATTRACTIONS TO APPEAR AT CLUNIE THEATER.

May 1st and 2nd—Olga Nethersole.
 May 5th—Ruth St. Denis in "Orient Dances."
 May 8th—Russian Symphony Orchestra.
 May 9th—Mme. Sarah Bernhardt in "Camille."
 May 16th—Blanche Ring in "The Yankee Girl."
 May 21st and 22nd—May Robson in "The Rejuvenation of Aunt Mary."

THEATERS AND AMUSEMENT PLACES.

THEATER DIEPENBROCK 12th & J Sts
 CLUNIE OPERA HOUSE K St. near 8th St

VAUDEVILLE HOUSES.

GRAND THEATER 7th Bet. K & L Sts
 PANTAGES THEATER K St. Bet 6th & 7th Sts

MOTION PICTURE HOUSES.

MAJESTIC K St. near 3d St
 SEQUOIA K St. Bet. 9th & 10th Sts
 LYRIC 6th, Bet. K & L Sts
 ACME 7th St. Bet. K & L Sts
 EDISON K St. Bet. 4th & 5th Sts
 PEOPLES 5th St. Bet. J & K Sts
 EMPIRE K St., Bet. 4th & 5th Sts
 BELL 5th St., Bet. J & K Sts

PLENTY OF AMUSEMENT FOR OLD AND YOUNG

EVENTS OF THE MONTH

Monday, May 1st.

Grand Carnival and Fair at Oak Park.

Thursday, May 4th.

Sacramento Retail Merchants' Association Members Visit Stockton—F. O. Eagles Dance, Turner Hall—Turn Verein Dance, Turner Hall.

Saturday, May 6th.

Grangers' Picnic, Elk Grove—Boys' Track Meet, Oak Park Ball Grounds, under Auspices of Y. M. C. A.

May 9th, 10th, 11th, 12th, 13th, 14th.

Vernon vs. Sacramento.

Thursday, May 11th.

Big Festival on Haggin Grant.

Saturday, May 13th.

Sells-Floto Circus.

Sunday, May 14th.

Regatta Day—On River—Boat Races.
 Driving Club Matinee, Agricultural Park.

Monday, May 15th.

Opening Day for the California Pharmaceutical Association—Four Day Convention.

May 16th, 17th, 18th, 19th, 20th, 21st.

Portland vs. Sacramento.

Wednesday, May 24th.

San Francisco Merchants Visit Sacramento on a Trip Up the Valley.
 Y. L. I. No. 48 Dance, Turner Hall.

Sunday, May 28th.

Driving Club Matinee, Agricultural Park.

NOTE—The publisher would appreciate on the part of those who are in a position to know of any civic, society or public demonstration of any kind under this head, to be held in Sacramento for the month following this issue. If they are reported to this office before the 25th of the month they will appear in the next issue of the Guide.

SACRAMENTO THE CONVENTION CITY OF THE WEST.

Leading Family Hotel. Free Bus To and From All Trains

Morrison AND Burns PROPRIETORS **WESTERN HOTEL**

K Street, Bet. Second and Third Streets
SACRAMENTO, CAL.

MEALS, 25c Board and Room
\$1.25 to \$2.00 per Day

305 J STREET

TEL. MAIN 694

We Are Equipped to Do Your
Printing at Short Notice

PUBLISHING, ADVERTISING, CATALOGUES
SOCIETY & COMMERCIAL STATIONERY
BOOKS PROGRAMS

Is given special attention

WILLIAM E. TERWILLIGER

Publisher of the Sacramento Souvenir Guide

☐ Rates for space furnished on request.

☐ NOTE—This Guide is found in 12 cities in California.

"SAY YOU SAW IT IN SACRAMENTO SOUVENIR GUIDE"

Names, and Locations of all Public Office Buildings, Banks and Hotels

STATE LIBRARY	-----	State Capitol
CITY FREE LIBRARY	-----	7th & I Sts.
POST OFFICE	-----	7th & K Sts.
STATE PRINTING OFFICE	-----	15th & L Sts.
CITY HALL	-----	I St., 9th & 10th
COUNTY COURT HOUSE (Temp.)	-----	6th, I & J Sts.
COUNTY JAIL	-----	I St., 6th & 7th Sts.
AMERICAN CASH BLDG.	-----	8th, K & L Sts.
BRYTE BLDG.	-----	7th & J Sts.
CASEY BLDG.	-----	Cor. 6th & J Sts.
ELKS' BLDG.	-----	824 J St.
GERBER BLDG.	-----	K St., 6th & 7th
HAUB BLDG.	-----	S. 8th, I & J Sts.
HAGELSTEIN BLDG.	-----	S. W. Cor. 9th & K
I. O. O. F. BLDG.	-----	N. E. Cor. 9th & K
INVERNESS BLDG.	-----	10th, J & K
MASONIC BLDG.	-----	S. W. Cor. 6th & K
OCHSNER BLDG.	-----	719 1/2 K St.
STOLL BLDG.	-----	S. W. Cor. 5th & K
SUTTER BLDG.	-----	S. W. Cor. 5th & J
SACRAMENTO BANK BLDG.	-----	5th & J Sts.
REDMEN'S HALL	-----	10th Bet. I and J

BANKS.

CALIFORNIA NATIONAL BANK	-----	N. W. Cor. 4th & J Sts.
FARMERS' AND MECHANICS' BANK	-----	S. E. Cor. 4th & J Sts.
FORT SUTTER NATIONAL BANK	-----	S. W. Cor. 7th & J Sts.
D. O. MILLS NATIONAL BANK	-----	S. E. Cor. 2d & J Sts.
PEOPLE'S SAVINGS BANK	-----	S. W. Cor. 8th & J Sts.
SACRAMENTO BANK	-----	N. W. Cor. 5th & J Sts.
CAPITAL TRUST & BANKING CO.	-----	S. E. Cor. 7th & J Sts.
SACRAMENTO VALLEY TRUST CO.	-----	8th, Bet. J & K Sts.

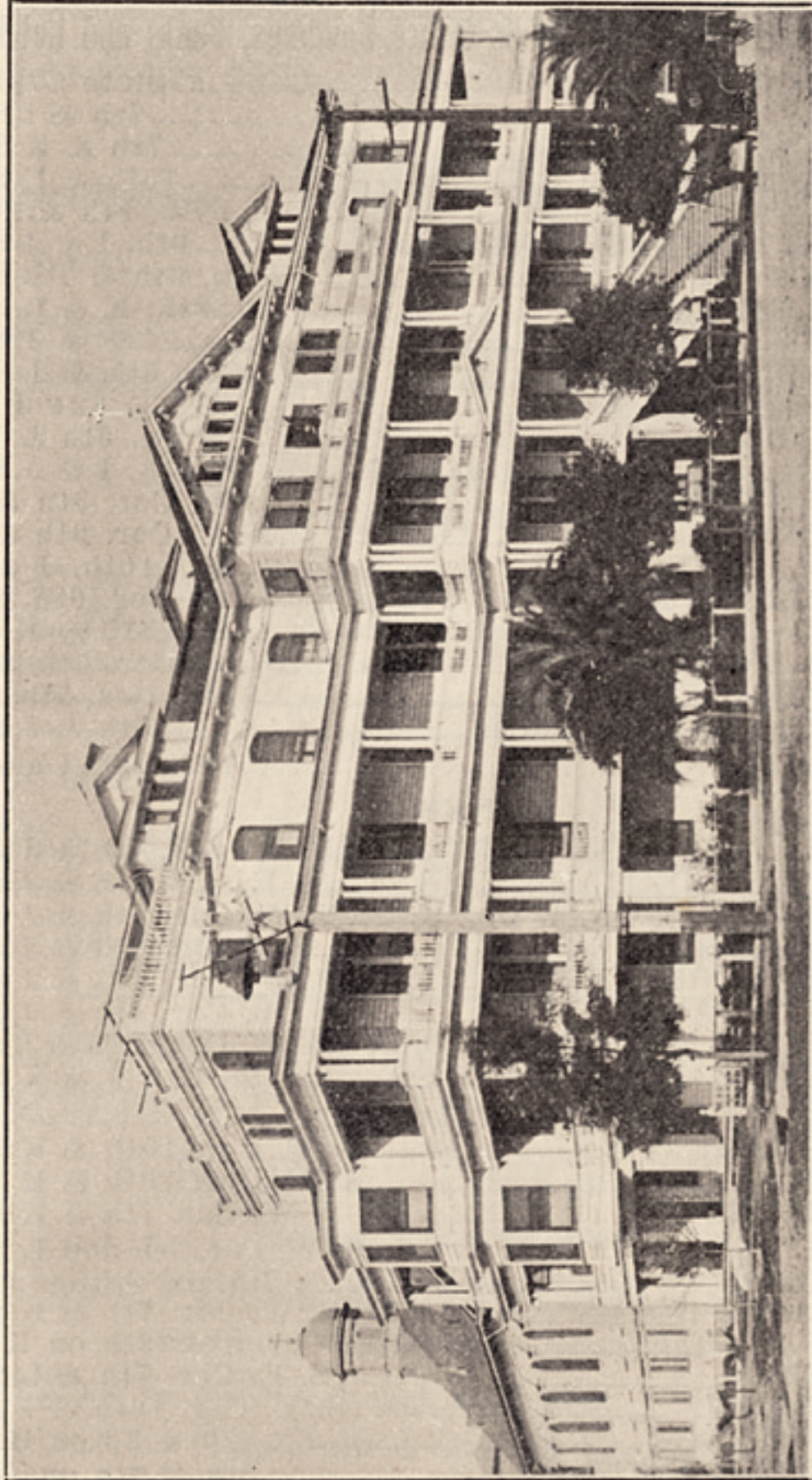
HOTELS.

HOTEL SACRAMENTO	-----	S. E. Cor. 10th & K Sts.
HOTEL LAND	-----	S. W. Cor. 10th & K Sts.
CAPITAL HOTEL	-----	N. W. Cor. 7th & K Sts.
HOTEL CLAYTON	-----	S. W. Cor. 7th and L Sts.
COLUMBIA HOTEL	-----	7th and 8th on J St.
GOLDEN EAGLE HOTEL	-----	S. W. Cor. 7th & K Sts.
THE TURCLU HOTEL	-----	N. E. Cor. near 8th on K St.
THE COLONIAL	-----	S. E. Cor. 7th & L Sts.
THE ST. FRANCIS	-----	S. E. Cor. 10th & I Sts.
WESTERN HOTEL	-----	2d & 3d on K St.
NEW WM. TELL HOTEL	-----	8th & 9th on J St.

WHERE FLOWERS BLOOM ALL THE YEAR 'ROUND.

REMODELED TO DATE 1908

ESTABLISHED 1895



Mater Misericordiae Hospital

AN TRAINING SCHOOL FOR NURSES

Maternity Department

CONDUCTED BY SISTERS OF MERCY Most up-to-date surgery on the coast.

TWENTY-THIRD STREET BETWEEN Q AND R STREETS. TELEPHONES MAIN 51 AND MAIN 547 OR APPLY TO SISTERS OF MERCY.

"SAY YOU SAW IT IN SACRAMENTO SOUVENIR GUIDE"

CLUBS.

CAPITAL CITY WHEELMEN	Sacramento Bank Bldg
SACRAMENTO ATHLETIC CLUB	906 9th St
SACRAMENTO BOAT CLUB	Broderick
SACRAMENTO GOLF CLUB	J St. Road
SUTTER CLUB	California Nat. Bank Bldg
UNIVERSITY CLUB	Sacramento Hotel
ELKS' CLUB	Elks' Hall or Elks' Bldg
SATURDAY CLUB	Congregational Church
TUESDAY CLUB	Elks' Hall
CALUMET SOCIAL CLUB.....	Redmen's Hall

SOCIETIES AND LODGES.

A. O. F.....	Redmen's Hall
FORESTERS	7th & 8th on I St
F. O. E. AERIE NO. 9	Cor. 9th & J Sts
FRATERNAL BROTHERHOOD.....	Redmen's Hall
I. O. F.....	Redmen's Hall
I. O. O. F.	Cor. 9th & K Sts
KNIGHTS OF THE MACCABEES.....	Redmen's Hall
KNIGHTS OF COLUMBUS	706 1/2 K St
LADIES OF THE MACCABEES.....	Redmen's Hall
LOYAL ORDER OF MOOSE	519 Ochsner Bldg
MASONIC TEMPLE	Cor. 6th & K Sts
MODERN WOODMEN OF AMERICA.....	Redmen's Hall
N. D. G. W.....	Redmen's Hall
ORDER OF OWLS.....	Redmen's Hall
REDMEN'S WIGWAM	10th, Bet. I & J Sts
WOMEN OF THE WOODCRAFT.....	Redmen's Hall
Western Star Verein.....	Redmen's Hall
Y. L. I. (ST. FRANCIS).....	Redmen's Hall
YOUNG MEN'S INSTITUTE	Cor. 6th & L Sts
Y. W. C. A.	I St., Bet. 7th & 8th Sts
Y. M. C. A.	Cor. 5th & J Sts

CIVIC ORGANIZATIONS.

CHAMBER OF COMMERCE	2d & G Sts
RETAIL MERCHANTS' ASSOCIATION	Hagelstein Bldg
MERCHANTS' & MFG. ASSOCIATION	Stoll Bldg
SACRAMENTO BOARD OF TRADE	203 J St

ASYLUMS, HOMES AND HOSPITALS.

CITY RECEIVING HOSPITAL	Front & I Sts
WENTWORTH HOSPITAL	2615 I St
COUNTY HOSPITAL	Stockton Road
MATER MISERICORDIAE HOSPITAL (Sisters).....	23d, Bet. Q & R St
WHITE HOSPITAL	Cor. 29th & J Sts
SOUTHERN PACIFIC R. R. HOSPITAL.....	8th & F Sts
LOUISE M. IGO HOSPITAL	1525 L St
MATER MISERICORDIAE HOME (Sisters).....	22d, Bet. Q & R Sts
STANFORD MEMORIAL HOME	Cor. 8th & N Sts
SACRAMENTO CHILDREN'S HOME	1528 2d St
SACRAMENTO ORPHANAGE AND FARM	Lower Stockton Road, Cor. Palmetto
HOME OF THE MERCIFUL SAVIOR	3410 J St
MARGUERITE HOME FOR AGED WOMEN	1617 7th St

A COMMUNITY WITH A PERFECT SANITARY SYSTEM

LOCAL STREET CAR SERVICE

The Sacramento street car service is one of the best regulated systems of street railway in the West, with its many lines of cars, eight running east and west and seven running north and south, practically covering every section of the city. The following are the routes and time of first and last cars leaving the terminals; routes and service:

G ST. LINE TO 31ST. & H STS.—First car leaves 31st and H Sts. at 5:27 a. m., and from the S. P. Depot at 5:47 a. m. Last car leaves 31st and H Sts. at 12:17 a. m., and from the S. P. Depot, 12:37; average service nine minutes. Route from S. P. Depot south on 2d St. to K St., thence east to 7th St., thence north to G St., thence east to 31st St. Carries green sign, reading G St. McKinley Park, and green light at night.

J ST. LINE TO OAK PARK.—First car leaves Oak Park at 5:10 a. m., and from the S. P. Depot at 5:40 a. m. Last car leaves Oak Park at 12 m., and from the S. P. Depot at 1:30 a. m. (returning via M St.); average service ten minutes. Route from S. P. Depot south on 2d St. to J St., thence east to 28th St., thence south to Y St., thence to Oak Park. Carries green sign, reading J St. Oak Park. Green light at night.

J. ST. LINE TO EAST LAWN.—First car leaves East Lawn at 5:35 a. m., and from the S. P. Depot at 6:05 a. m. Last car leaves East Lawn 11:35 p. m., and from the S. P. Depot at 12:05 a. m. Route from S. P. Depot south on 2d St. to J St., thence east to East Sacramento and East Lawn. Average service, twenty minutes. Carries red sign, reading J St. to East Lawn. Red light at night.

M ST. LINE TO 28th ST.—First car leaves 28th and M Sts. at 5:30 a. m., and from the S. P. Depot at 5:50 a. m. Last car leaves 28th and M Sts. at 12:10 a. m., and from the S. P. Depot at 12:30 a. m.; average service ten minutes. Route from S. P. Depot south on 2d St. to K St., thence east to 15th St., thence south to M St. (Capital Ave.), thence east to 28th St. Carries red sign, reading M St. to 28th St. Red light at night.

P ST. LINE TO OAK PARK.—First car leaves 28th and P Sts. at 5:30 a. m., and from the S. P. Depot at 5:55 a. m. Last car leaves Oak Park at 12:05 a. m., and from the S. P. Depot at 12:35 a. m.; average service seven minutes. Route from S. P. Depot south on 2d St. to K St., thence east to 10th St., thence south to P St., thence east to 28th St., thence south to Y St., thence east to Oak Park. Carries white sign, reading P St. to Oak Park; white light at night.

T ST. LINE TO RACE TRACK.—First car leaves the Race Track at 5:48 a. m. and from 7th and K Sts. at 6:02 a. m. Last car leaves the Race Track at 11:48 p. m., and from 7th and K Sts. at 12:17 a. m.; average service fifteen minutes. Route from 7th and K Sts. south to T St., thence east to 28th St., thence south to Y St., thence east to Oak Park and the Race Track. Carries red sign, reading T St. to Race Track; red light at night.

10th ST. LINE.—First car leaves Swimming Baths at 5:55 a. m., and from the S. P. Depot at 6:02 a. m. Last car leaves Swimming Baths at 11:55 p. m., and from the S. P. Depot at 12:17 a. m.; average service fifteen minutes. Route from S. P. Depot south on 2d St. to K St., thence east to 10th St., thence south to Y St., thence to River Side Road to Swimming Baths. Carries green sign, reading 10th St. to Ostrich Farm and Swimming Baths; green light at night.

21st LINE TO OAK PARK—First car leaves Oak Park at 5:28 a. m., and from the S. P. Depot at 5:57 a. m. Last car leaves Oak Park at 11:58 p. m., and from the S. P. Depot at 12:27 a. m.; average service fifteen minutes. Route from S. P. Depot south on 2d St. to J St., thence east to 10th St., thence south to K St., thence east to 15th St., thence south to P St., thence east to 21st St., thence south to Y St., thence through Curtis Oaks to Oak Park. Carries blue sign, reading 21st St. to Curtis Oaks and Oak Park; blue light at night.

3d & P ST. LINE.—First car leaves 3d and J Sts. at 6:00 a. m. Last car leaves 12:15 a. m. Route from 3d and J St. south to P St., thence east to 10th and return; average service fifteen minutes.

3d & T ST. LINE.—First car leaves 3d and J Sts. at 6:07 a. m. Last car leaves at 11:07 p. m. Route from 3d and J Sts. south to T St., thence east to 15th St., thence north to P St., and return; average service thirty minutes.

C. C. T. CO. CITY LINE.

8th & X ST. LINE.—First car leaves 8th and J St. at 5:15 a. m., and from Colonial Heights at 5:45 a. m. Last car leaves 8th and J Sts. at 12:45 a. m., and from Colonial Heights at 1:15 a. m.; average service fifteen minutes. Route from 8th and J St. south to X St., thence east through Oak Park to Colonial Heights.

N. E. R. CO. CITY LINES.

I ST. LINE.—First car leaves 8th and J Sts at 6:10 a. m., and from 18th and D Sts. at 6:00 a. m. Last car leaves 8th and J Sts. at 10:50 p. m., and from 18th and D Sts. at 10:40 m.; average service twenty minutes.

GENTLE HINTS TO STRANGERS.

Street cars stop at first crossings.

Ask for transfers when paying fare.

Ask questions of conductor.

Do not expectorate on the sidewalk or in public places; it is against the law; \$5.00 fine.

If you have a vehicle of any kind while in the business district, face it East on the South side of the street and face it West on the North side of the street.

A CITY OF PROGRESSIVE AND AMBITIOUS PEOPLE.



SOUTHERN PACIFIC

SACRAMENTO

Trains Leave and are Due to Arrive from February 20, 1911



SOUTHERN PACIFIC

SACRAMENTO

Trains Leave and are Due to Arrive from February 20, 1911

Leave	EAS AND WEST	Arrive
12.45 a	China and Japan Fast Mail—Ogden, Cheyenne, Denver, Kansas City, Omaha and Chicago	10.43 a
4.20 a	Benicia, Richmond, Stege, Oakland, San Fran	3.30 p
5.25 a	Suisun, Benicia, Port Costa, Oakland, Berkeley and San Francisco	11.50 p
6.55 a	Benicia, Port Costa, Oakland, Berkeley, Alameda and San Francisco	12.30 a
7.00 a	Davis, Benicia, Vallejo Junction, Richmond, Oakland, San Francisco, Elmira, Vacaville, Winters, Rumsey, Suisun, Vallejo, Santa Rosa, Napa, Calistoga	7.10 p
7.25 a	Roseville Auburn, Colfax	6.30 p
7.30 a	(Motor) For Fair Oaks, Folsom, Placerville and Way Stations	5.45 p
8.25 a	EL DORADO—Benicia, Vallejo Junction, Oakland and San Francisco	8.15 p
10.20 a	(Motor)—Fair Oaks Bridge, Folsom	8.05 a
11.05 a	Davis, Elmira, Suisun, Benicia, Oakland, San Francisco	12.35 p
12.50 p	ATLANTIC EXPRESS—Auburn, Colfax, Truckee, Reno, Ogden, Salt Lake City, Denver, Kansas City, St. Louis, Chicago	4.50 p
2.00 p	Fair Oaks Bridge, Folsom and Placerville	9.45 a
2.10 p	San Francisco Overland Limited—San Francisco. (No local passengers carried between Sacramento and San Francisco)	2.10 p
2.15 p	San Francisco Overland Limited—Ogden, Cheyenne, Omaha, St. Louis, Chicago, Salt Lake City (No local passengers carried between Sacramento and Truckee)	2.00 p
3.30 p	Davis, Dixon, Suisun, Benicia, Vallejo Junction, Richmond, Oakland, San Francisco, Elmira, Vacaville, Winters, Vallejo, Santa Rosa, Napa, Calistoga	11.05 a
5.00 p	Benicia, Oakland and San Francisco	3.15 a
5.15 p	Roseville, Auburn and Colfax	9.10 a
5.45 p	(Motor) Fair Oaks Bridge and Folsom	2.15 p
6.55 p	Davis, Dixon, Suisun, Benicia, Richmond, Oakland, San Francisco, return via Niles, Tracy, Stockton, Lodi	7.15 a
7.25 p	Roseville, Auburn, Colfax, Truckee, Reno, Tonopah, Goldfield	6.50 a
10.45 p	Express—Roseville, Auburn, Colfax, Truckee, Reno, Ogden, Pueblo, Denver, Kansas City, Omaha, Chicago	4.50 a

Leave	NORTH AND SOUTH	Arrive
12.05 a	Portland Express—Lincoln, Marysville, Chico, Redding, Sisson, Ashland, Portland, Tacoma, Seattle	5.10 a
7.10 a	Brighton, Elk Grove, Ione, Stockton	12.45 p
9.40 a	Elk Grove, Stockton, Lathrop, Tracy, Livermore, Oakland, San Francisco, Galt, Ione, Valley Spring, Oakdale, Jamestown, Sonora, Tuolumne, Angels, Modesto, Merced, Fresno, Bakersfield, Los Angeles, Hanford, Coalinga, Santa Paula, Ventura, Santa Barbara, El Paso, San Antonio, Houston, New Orleans, Kansas City, St. Louis, Chicago, Niles, San Jose, Gilroy, Hollister, Watsonville, Santa Cruz, Monterey, Pacific Grove, San Luis Obispo	3.30 p
10.00 a	Davis, Woodland, Marysville, Palermo, Oroville	7.55 a
10.05 a	Davis, Arbuckle, Colusa Junction, Willows, Red Bluff, Hamilton	3.15 p
11.05 a	SHASTA LIMITED—Portland	7.10 p
11.20 a	Roseville, Marysville, Chico, Vina, Red Bluff, Dunsmuir	3.15 p
1.50 p	Brighton, Elk Grove, Lodi, Stockton, Lathrop, Tracy, Livermore, Niles, Oakland, San Francisco, San Jose, Salinas, San Luis Obispo, Lompoc	7.40 p
2.20 p	(Motor) Davis, Woodland, Arbuckle, Colusa Junction, Williams, Willows	8.10 p
4.05 p	Roseville, Marysville, Chico, Red Bluff	9.15 p
4.55 p	Elk Grove, Lodi, Stockton, Lathrop, Modesto, Merced, Madera, Fresno, Tracy, Newman, Bakersfield, Santa Barbara, Los Angeles, Antioch, Martinez, Port Costa, Richmond, Oakland, San Francisco	10.45 a
6.10 p	Davis, Woodland, Knights Landing, Marysville	4.30 p
6.55 p	(Motor) Yolo, Arbuckle, Colusa Junction, Willows	11.55 a
8.20 p	Roseville, Marysville, Palermo, Oroville	8.10 a

DEPOT
Second and G Streets

OFFICES
801 K Street

JAS. O'GARA

District Freight and Passenger Agent

H. S. FENTON, City Ticket Agent

H. C. BRONSON, Depot Agent

YOU CAN GO ANYWHERE FROM SACRAMENTO.

SACRAMENTO THE TERMINAL POINT OF THE WEST.

GO TO
WAHL STATIONERY CO.

FOR YOUR
FANCY AND COMMERCIAL STATIONERY
OFFICE SUPPLIES FILING CABINETS
SCHOOL BOOKS MAGAZINES
PRINTING AND ENGRAVING

923 K St. Phone 373

WESTREN PACIFIC
SACRAMENTO

Leave	LIMITED AND LOCAL	Arrive
1.01 a	NO. 4 ATLANTIC COAST LIMITED—Eastbound—Marysville, Oroville, Big Bar, Keddie, Hartwell, Quincy, Spring Garden, Portola, Beckwith Junction, Omira, Doyle, Gerlach, Sulphur, Winnemucca, Golconda, Kampos, Beowawe, Carlin, Elko, Halleck, Deeth, Wells, Shafter, Wendover, Delle, Grants, Salt Lake City, and all local points. Westbound as Pacific Coast Limited No. 1	4.00 p
8.20 a	NO. 9—"The Capital City Special"—Stockton, Livermore, Pleasanton, Oakland and San Francisco	9.50 p
4.00 p	No. 1—Pacific Coast Limited—Westbound—Thornton, Stockton, Livermore, Pleasanton, Oakland and San Francisco. Eastbound as Atlantic Coast Limited No. 4	1.01 a

DEPOT 19th and J Streets. OFFICE 1000 K Street
J. C. HAVERLY District Passenger Agent
H. H. DERR City Passenger Agent **J. L. SCOTT** Depot Agent

SACRAMENTO THE RAILROAD HUB OF THE WEST.



Northern Electric Railway Co.
SACRAMENTO
MARYSVILLE - OROVILLE - CHICO



All Trains Arrive and Leave from the Electrical Terminal 8th and J Streets

Leave Sac'to. 8th and J Sts.	Leave Marysville	Arrive Oroville	Arrive Chico	Leave Chico	Leave Oroville	Leave Marysville	Arrive Sac'to. 8th and J Sts.
7.45 a	9.09 a	10.31 a	10.50 a	6.30 a	6.45 a	8.10 a	9.30 a
9.45	11.09	12.30 p	12.40 p	8.30	8.47	10.12	11.30
11.45	1.09 p	2.29	2.45	10.30	10.47	12.12 p	1.30 p
2.00 p	3.24	4.44	5.00	1.30 p	1.45 p	3.11	4.30
4.00	5.24	6.44	7.00	3.45	4.00	5.23	6.40
6.15	7.34	8.45	9.00	5.45	6.00	7.21	8.35
8.45	9.58	11.12	11.30	8.30	8.45	10.04	11.15

Connections made at Sacramento with California Transportation Co.'s steamers between San Francisco and Sacramento, also with Central California Traction Co.'s trains for Stockton.
S. W. RUSSELL, Gen. Frgt. & Pass. Agt., 803 J Street.



CENTRAL CALIFORNIA TRACTION CO.
SACRAMENTO
LODI AND STOCKTON

ALL TRAINS ARRIVE AND LEAVE FROM THE ELECTRIC TERMINAL, EIGHTH AND J STS.

Leave Sacramento	Arrive Lodi	Arrive Stockton	Leave Stockton	Arrive Lodi	Arrive Sacramento
7.10 a	8.45 a	9.00 a	6.45 a	7.00 a	8.35 a
10.00	11.34	12.10 p	8.45	9.00	10.50
12.15 p	1.48 p	2.05	9.45	10.00	11.35
2.00	3.45	4.05	12.05 p	12.15 p	1.55 p
4.00	5.45	6.00	1.45	2.00	3.37
5.00	6.45	6.55	3.40	4.17	5.55
7.00	8.37	8.52	4.45	5.00	6.40
8.50	10.18	10.40	6.55	7.10	8.40

Connections made at Stockton with California Navigation and Improvement Co.'s steamers for San Francisco, and with Santa Fe for points in San Joaquin Valley.
THOS. KEARNS, Agent, 1012 Eighth Street.

NEW RAILROAD BUILDING EVERY YEAR.

UP AND DOWN RIVER STEAMERS TIME SCHEDULE

FOR SAN FRANCISCO, BENICIA, COLLINSVILLE, EMMATON, RIO VISTA, ISLETON, RYDE, WALNUT GROVE, VORDEN, COURTLAND, CLARKSBURG AND SACRAMENTO LANDINGS.

Str. Navajo.—Leaves foot of K St. S. P. Wharf at 9:00 p. m. daily, except Sunday. Makes no stops on down trip. Arrives S. F. 5:00 a. m. Leaves foot of Pacific St., S. F., at 8:00 a. m. daily, except Sunday. Making all river landings. Arriving at 6:00 p. m.

Str. Modoc.—Leaves foot of K St. S. P. Wharf at 10:30 a. m. daily, except Sunday. Making all river landings.

Str. Apache.—Leaves foot of Pacific St., S. F., at 1:00 p. m. daily, except Sunday. Making all river landings. Steamers alternate.

FOR SAN FRANCISCO, COLLINSVILLE, RIO VISTA, ISLETON, RYDE, WALNUT GROVE, VORDEN, COURTLAND AND CLARKSBURG.

Str. Capital City.—Leaves foot of M St., City Wharf, at 5:00 p. m. Arrives at S. F. 6:00 a. m. daily, except Sunday.

Str. Pride of the River.—Leaves foot of Jackson St., S. F., at 5:00 p. m. Arrives at Sacramento 6:00 a. m. Steamers alternate. Connections made with Northern Electric Railway.

FOR STOCKTON, ANTIOCH AND WAY LANDINGS.

Passenger Launches Empress and Duchess.—Leave foot of M St., City Wharf, at 8:15 a. m. daily, returning at 6:30 p. m. Boats meet at Isleton.

FOR MONUMENT, ELKHORN, PAT DOYLES, VERNON, KNIGHTS LANDING, KIRKVILLE, TISDALE, GRIMES, MERIDIAN AND COLUSA.

Str. Sentinel.—Leaves foot of M Ct., City Wharf, at 7:00 a. m. on Mondays, Wednesdays and Fridays. Returning on Tuesdays, Thursdays and Saturdays, at 5:00 p. m.

FOR WALNUT GROVE AND WAY LANDINGS.

Str. Oriole.—Leaves foot of M St. at 4:00 a. m. daily, except Sunday.

FOR VERNON AND NICHOLAS.

Str. Gretta A.—Leaves foot of M St. at 12:00 noon Tuesdays, Thursdays and Saturdays.

STAGE AND AUTO ROUTES.

FOR FOLSOM AND WAY STATIONS—FARE 75 CENTS.

Auto Stage.—Leaves 8th and J Sts at 10:15 a. m., 4:15 p. m. and 8:30 p. m. daily, and 10:15 a. m., 4:15 p. m. and 11:30 p. m. Sundays.

FOR FAIR OAKS AND BY STATIONS—FARE 50 CENTS.

Auto Stage.—Leaves Turclu Hotel, K St., near 8th St., at 10:30 a. m. and 4:30 p. m. Saturday and Sunday night trips by engagement.

FOR WALSH, SLOUGH HOUSE, COSUMNE, BRIDGE HOUSE, MICHIGAN BAR, FOREST HOME AND PLYMOUTH.

Stage.—Leaves P. O. at 6:30 a. m. Arrives at Plymouth at 5:30 p. m. Leaves Plymouth at 7:00 a. m. Arrives P. O., Sacramento at 3:30 p. m.

Sacramento on the Largest Navigable River in California.