

# NATOMAS NEWS

NATOMAS CONSOLIDATED OF CALIFORNIA

VOLUME 1

SACRAMENTO, CALIFORNIA, DECEMBER, 1911

NUMBERS 9 & 10



HOLIDAY NUMBER

# FACTS ABOUT CALIFORNIA

California is the second State in the Union in area, and the twelfth in population.

The coast line of California is nearly 1,000 miles in length, and the State has an average width of 200 miles. The total land area of California is 158,360 square

miles—a trifle less than one-twentieth of the area of the entire United States.

Of this 100,000,000 acres of land in the State, two-fifths, or 40,000,000 acres, are arable, the remainder being either desert or mountains too steep for cultivation.

## CLIMATE

The Japan current gives the entire State the same general average temperature at points of the same altitude and the same distance from the sea.

The California climate is temperate and equable. On the coast it is cool the year round, with a mean temperature of 55°. In the valleys where the warm summers provide an excellent growing and harvesting season there are greater variations of temperature. The thermometer has been known to drop as low as 20° (above), and not infrequently registers over 100° in the midsummer months. Because of the dryness of the heat this is less objectionable than 85° in the humid Eastern atmosphere. The mean temperature for the valleys during the past twenty-seven years is between 60 and 65°.

## RAINFALL

There are two seasons—the wet and the dry. Rain falls during the period from November to April, and almost never during the summer. The average annual rainfall at Sacramento for the past thirty years is 20.20 inches. At Red Bluff, at the northern part of the Sacramento Valley, it was 25.7 inches for the same period. For the past twenty-seven years the United States Weather Bureau reports show an average annual rainfall of 21.24 inches for San Francisco and an average for Los Angeles of 16.08 inches.

COMPARE THE STATES SHOWN ON THIS MAP WITH CALIFORNIA.

Ten States .....square miles 149,945; population 26,623,535  
California .....square miles 158,360; population 2,377,549

## POPULATION

The 1910 census reports show that California has a population of 2,377,549. This is an increase of 60% over the figures of 1900. The density of population in California is 15 persons to the square mile.

## COMPARATIVE FIGURES

Denmark, with an area of 14,850 square miles, has a population of 2,450,000. Density of population, 165.

The British Isles, with an area of 121,377 square miles, or 77,683,084 acres, had in 1909 a population of 45,008,421. It is interesting to note that 46,876,686 acres out of the whole are under cultivation. Density of population, 371. The Netherlands, with 12,500 square miles, has 5,100,000 inhabitants. Density of population, 408. Belgium has succeeded in supporting a greater number of persons per acre than any of the above countries. On 11,400 square miles there is a population of 6,700,000. The density of population is 587.

Compare these figures with California's 15 to the square mile.

## CALIFORNIA FARMS

There are 100,000 farms in California waiting for settlers. The two great river valleys which stretch north and south for a distance of five hundred miles and are fifty miles wide, are rich and productive. All they need is a greater farming population, and this they will very shortly acquire.



# THE SACRAMENTO VALLEY

The fertile Sacramento Valley, comprising eleven counties, has now a population of 204,996. Its area is 14,873 square miles—practically the size of Denmark and larger than Holland and Belgium. Yet each of those countries supports millions on land not so rich as this river valley. There are but 17,000 farms in the Sacramento Valley, which is at the rate of a little less than one square mile to each farm. One square mile in this valley should be supporting no less than forty small farms.

The valuation of the products raised in the valley for the year 1908, including cattle, lumber and crushed rock as well as fruit and vegetables, was \$109,416,076, according to figures given out by the Sacramento Valley Development Board.

There is no other spot in the world where so great a variety of crops attain to such a high degree of perfection as in the Sacramento Valley.

# Phases of Natomas' Great Reclamation Work

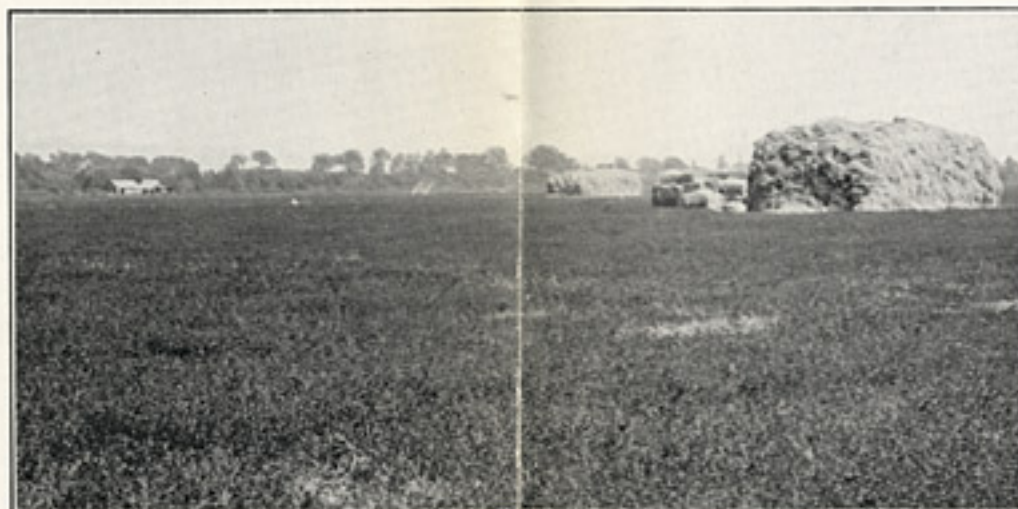


1 Work on the Bear River Completed Before Christmas. The Photograph Was Taken Above the Drag Line Excavators and Shows Only a Small Portion of the Force Employed.

The photographs are presented in the order that the work is being undertaken, starting from the foothills to the Sacramento River.



2 Drag Line Excavator Building Up the Levee.

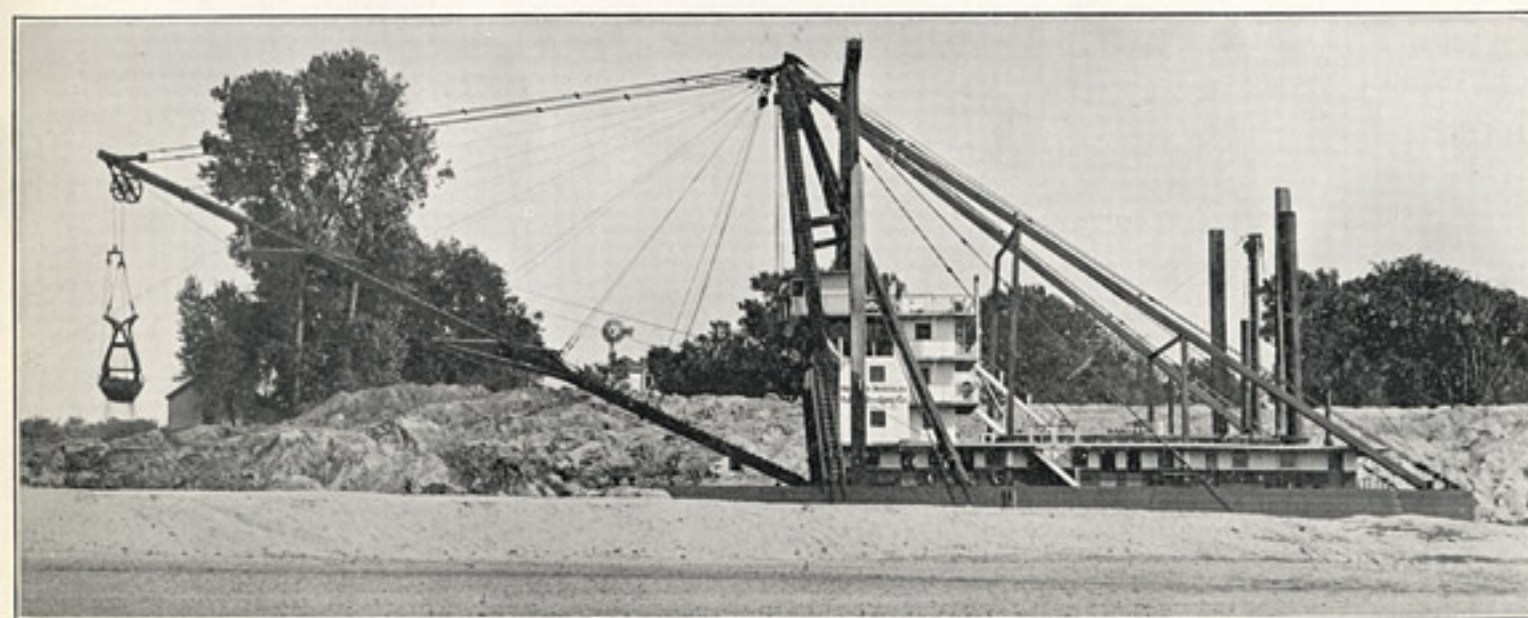


3 An Alfalfa Field on the Reclaimed Lands Near Nicolaus.

4 The Levee as It Looks Completed.



5 The Dredge "Thor" Above Nicolaus.



6 The "Hercules," the Largest Clam Shell Dredge in the World.

# NATOMAS PROPERTIES

Lie North and East of Sacramento

The Capital of California

## Sacramento

is the largest city north of San Francisco and by recent annexation now has a population of over 60,000.

## Facts About Natomas Reclaimed Land

It is deep, rich, river bottom, alluvial soil suitable for alfalfa, vegetables and all fruits. Transportation facilities by rail and water are the best. Good roads will be constructed throughout the district. Being adjacent to Sacramento, residents of these farms will enjoy city as well as country advantages, and have a ready market and convenient shipping point for their produce.

NATOMAS RECLAMATION  
60,000 ACRES

NATOMAS IRRIGATED LANDS  
30,000 ACRES

